



Geophilia

MASTER IN GEOPHILIA:
THE SCIENCE OF SPACE
HARMONICS

GEOPHILIA

Greece | Mexico | France | Spain

www.geophilia.org | contact@geophilia.org



Module 1

FRACTAL SCIENCE



Module 1. Fractal Science

1. What is science?
2. What is conscience?
3. Rupert Sheldrake and the 10 dogmas of modern science: materialist, cartesian, dualist
4. Noam Chomsky and the 10 manipulation strategies
5. Greg Braden and the Divine Matrix
6. What is fractality?
7. What is the length of Planck?
8. The Caduceus Aureus, origins and solutions
9. Negentropy vs entropy
10. Nesting of waves and DNA
11. How to generate a fractal heart and have an immune health?
12. Bioacoustics and the health of ecosystems
13. Kundalini relationship, heart, endocrine system
14. Sacrocranial therapy
15. Conjugation of phase and coherence in life
16. What is gravity?
17. Mathematics of the golden quantum field
18. The cause of gravity: the fractality of love
19. Symmetry dodeca / icosahedron vs cube / octahedral symmetry
20. El Naschie and the aurea quantum mechanics
21. Garret Lisi and the mandala E8
22. The dodecahedral universe
23. Bob Dratch and molecular superconductivity
24. Phil Callahan and paramagnetism
25. Andree Crosse and abiogenesis
26. Korotkov and the GDV
27. Negative ion therapy
28. Sentics by Mandred Clynes: the geometric origin of emotions
29. The fractal electric field
30. The great conjugate fractal of the unified field
31. Platonic solids and the periodic table of the elements
32. Viktor Schauberger and the science of water implosion
33. Microwave communication
34. The equations of Navier Stokes
35. The frequency cascade of life
36. The effect of immortality
- What is the universe?
38. What is a biological capacitor?
39. The 4 constants of Kluver form before dying
40. Homunculus and the brain fractal
41. Bob Dratch and the scientific measurement of kundalini energy
42. Bioplasma and the bioactive field
43. Dan Winter and the wave fractal nesting theory
44. Synchronicity: the fractal unfolding in time
45. Separatist physics and the physics of unification
46. Nassim Hamein and the universe holo-fractographic
47. Theories by Nicola Tesla, Wilhelm Reich and Rupert Sheldrake
48. Bruce Lipton and the biology of belief
49. The origin of Energy
50. Quantum Physics
51. The Standard Model of Contemporary Physics
52. The Gravity of the macrocosm and the Quantum of the microcosm are united
53. The unit of measurement of the Universe are the Planck Units
54. The Force of Gravity exists on the Quantum scale, in the smallest

This document is Copyright ©2000-2023 by Geophilia Institute, LLC. All Rights Reserved. All the text in this document may not be copied or duplicated in whole or part by any means without express prior agreement in writing. Any redistribution or reproduction of part or all of the contents in any form is prohibited. The © Geophilia Design System is copyright of Arturo Ponce de Leon and Lydia Gian de Leon.

- 55. Gravity is the product of a whirlpool; the implosion / explosion is of a torus
- 56. Planck scale fundamental harmonics
- 57. The Architecture of the Universe works by the geometry of a torus
- 58. Discover the Geometry of Space / Time
- 59. The tetrahedron as the geometric minimum unit
- 60. The Flower of Life and the Fuller Model
- 61. The hexagonal and triangular symmetry
- 62. The dynamics of the Universe: the compression of a cube / octahedron in an icosahedron / dodecahedron
- 63. The tetrahedron and Teotihuacán
- 64. Planck Spherical Units and the Flower of Life
- 65. A civilization that raises stones of thousands of tons?
- 66. Two paradigms in the Architecture of the Universe
- 67. The Isolated vision
- 68. The Fractal vision that connects the microcosm with the macrocosm
- 69. The cuboctahedron is the ideal geometry of balance
- 70. The 2d only exists as a concept
- 71. Evolution of scientific thought
However, modern physics has a flat universe as a paradigm
- 73. Where does the reductionist vision originate and how to go beyond it?



Module 2

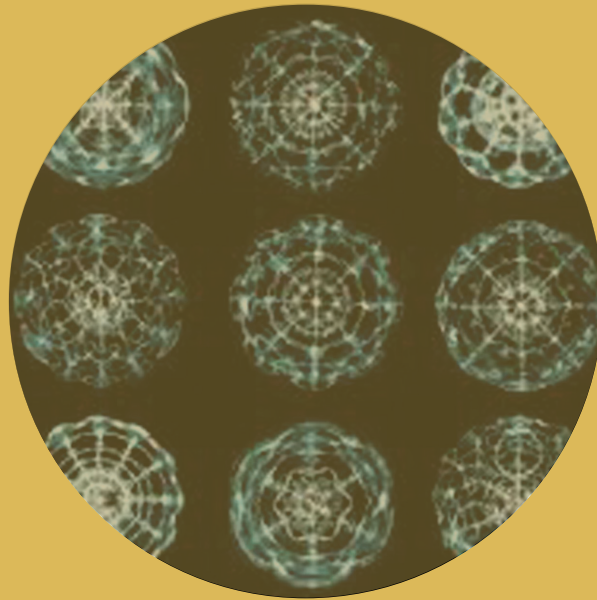
HUMAN CONSCIOUSNESS AND THE
FRACTAL VISION OF LIFE



Module 2. HUMAN CONSCIOUSNESS AND THE FRACTAL VISION OF LIFE

1. The 22 Human Psychotypes and the Path of Evolution
2. Human toroids, platonic solids and archimedean solids
3. Geometrical anatomy of the subtle bodies in the human being
4. Central archetypes of human psychology, its central conflicts and how to solve them
5. Geometric origin and activation of the Tree of Life of the Jewish tradition
6. Geometric origin and activation of the Enneagram of the Sufi tradition
7. The Enneagram of the personality and the Enneagram of the essence
8. Understanding of the 22 human psychotypes: psychological, physiological, anatomical characteristics, relationship of the system in the body, influence, toroid, central conflict, resolution and forms of communication
9. Study of the 3 levels of human types: tetrahedral, hexahedral, dodecahedra
10. The human being as a fractal toroid
11. Objective reality, subjective reality and observable reality
12. Movements of implosion and explosion in the essence and personality
13. Fractal reality
14. Geometry of the Tree of Life
15. The Path to Compassion
16. The 5 toroids: sexual, instinctive, motor, emotional, intellectual
17. The higher functions of consciousness
18. Strokes of the tree of life
19. The 3 Psychotics in the tetrahedron, digestive system
20. The 7 Psycotypes in the hexahedron, endocrine system
21. The 12 Psycotypes in the dodecahedron, nervous system
22. The Enneagram of the Sufi tradition
23. The number Pi in the enneagram
24. Fractal enneagram
25. Analysis of human toroids: functions, characteristics, color and sound
26. Explanation of the law of three and the law of octave: geometric origin and forms of use
27. Exercises to identify human types, categories and psychopathological
28. Techniques to change the state of explosion to the state of implosion
29. Method to heal from the heart: creating implosion
30. Solar code and psychological tendencies
31. Relationship of acupuncture meridians and solar astrophysics
32. Biorhythms of Michio Kushi
33. 22 Hebrew letters in the Sepher Yetzirah
34. Ofanim symbol and relation with symbol of the Temple of Solomon
35. Integration of the masculine and the feminine
36. Symptoms and self-healing
37. Measurement of life force: Hearttuner and biofeedback

This document is Copyright ©2000-2023 by Geophilosophy Institute, LLC. All Rights Reserved. All the text in this document may not be copied or duplicated in whole or part by any means without express prior agreement in writing. Any redistribution or reproduction of part or all of the contents in any form is prohibited. The © Geophilosophy Design System is copyright of Arturo Ponce de Leon and Lydia Gian de Leon.



Module 3

SACRED GEOMETRY: DRAWINGS,
NUMBERS, MUSIC



Module 3. SACRED GEOMETRY: DRAWINGS, NUMBERS, MUSIC

1. Mathematical constants in Sustainable Geometry: phi, pi, euler
2. Geometric constants in Sustainable Geometry: $\sqrt{2}$, $\sqrt{3}$, $\sqrt{5}$
3. Golden ratio
4. Rectangle, golden spiral and archimedean spiral
5. Origin of symbols in religions
6. Pentagon and the golden number
7. Triangle, golden oval
8. Mathematical formulas for phi, the golden number
9. Harmonic rectangles: auron, diagon, hemidiagon, quadrigon
10. Harmonic relationship and extensions
11. Analysis of commercial logos
12. Sustainable Geometry in the human body
13. Male and female reticulated harmonic
14. Human face and aesthetic mask
15. Art and Sustainable Geometry
16. Phi in plants (phylotaxis) and in animals
17. Stellation and correspondences of platonic solids
18. Star Mother: the secret of life
19. Thirteen Archimedean solids and horizontal toroids
20. Seven laws of creation : Vacuum Law; Law of unity: unified field; Law of autorecurrence; Law of polarity: complementary opposites; Law of containment: Flower of Life; Pattern of Genesis; Distribution Law: Pentaflor; Fractality Law
21. European, Hindu and phenomenological geometric order by contraction and expansion
22. Cymatics, the science of transforming sound into geometry
23. The physics of consciousness
24. Magic squares
25. Archaeological astronomical orientations
26. Primary unit of measure: Planck length by the exponent of the golden ratio or by duplication.
27. Primal design element: the five basic functions.
28. Primordial Design Geometry: toroid and cubo-octahedral / dodeca-icosahedral matrix
29. Activation with the corresponding vibration of each color in the body and healing of internal organs
30. The spectrum of frequencies and the range of human sensory perception
31. The color and its geometric origin
32. Relationship between the external world and the internal world: the identity of the Being
33. Electromagnetic waves: longitudinal, transverse and scalar
34. Electromagnetic spectrum
35. Characteristics of a wave: frequency, amplitude, signature
36. Frequencies and geometric shapes
37. The geometric origin of the color
38. Difference between RGB color and CMYK
39. Color empathy
40. Chromaticity diagram
41. The elementary forces: electricity, gravity and magnetism
42. How to change entropy by centropy
43. Geometric lines of primary, secondary and tertiary colors
44. Relationship of mandalas, chakras, sound and color

This document is Copyright ©2000-2023 by Geophilosophy Institute, LLC. All Rights Reserved. All the text in this document may not be copied or duplicated in whole or part by any means without express prior agreement in writing. Any redistribution or reproduction of part or all of the contents in any form is prohibited. The © Geophilosophy Design System is copyright of Arturo Ponce de Leon and Lydia Gian de Leon.

45. Geometry of the chakras, the toroids and the endocrine system
46. Measurement of light and the "real" scale of the light / sound ratio
47. Wave interference and how the events in our life are concatenated from these laws
48. Understanding the sound waves and their relationship with our daily life
49. The relationship between music and Sacred Geometry
50. The sacred proportions and the musical intervals
51. Range of concordance frequencies between the brain and the ear: the brain language
52. "Music of the spheres"
53. Bineural tone
54. Method of diagnosis and healing with the study of the tonal note
55. Psychological and geometric meaning of colors
56. Music history
57. Central concepts of music
58. The mathematics of music
59. Understanding the sound waves and their relationship with our daily life
60. Healing correlation table for sound therapy
61. The relationship between music and Sacred Geometry
62. The sacred proportions and the musical intervals
63. The different musical scales
64. The golden ratio in the design of musical instruments
65. The musical scales and the resonance of the Earth
66. Range of concordance frequencies between the brain and the ear: the brain language
67. Correspondences of brain waves, sound and visible light
68. Harmonic spectrum of the Earth
69. Musical scales and resonance of planets
70. "Music of the spheres"
71. The musical scale and its relation with architectural measures
72. What is a binary tone?
73. How are sound waves produced?
74. What is the frequency and amplitude of a wave?
75. What is a frequency cascade?
76. What is the sonic star?
77. Enneagram music mathematics
78. Favorable and unfavorable responses to binary induction tones
79. Technique of octavation of a note to reach higher or lower ranges of perceptible range
80. Obtaining the musical value of a chemical element: implications and uses
81. What is the study of the tonal note?
82. Law of Three or relationships
83. Law of Eighth or transformations
84. Law of Eighth and natural cycles of life
85. Musical scales and geometric relationship
86. Diapente, diatesaron and diapason
87. Brain / ear frequency range
88. The language of the brain wave
89. Spectrum of frequencies
90. Fourier and the frequency cascade
91. How is a frequency octave
92. Relationship of chemical elements and their frequency
93. Notes and wave frequency in relation to Fibonacci
94. Cretan labyrinth and musical notes
95. Colors and tones in real scale by octavation
96. Correspondence of brain waves, sound and light
97. Musical scales and resonance of the Earth
98. Planetary musical comparisons
99. Spectrum of harmonics of the Earth

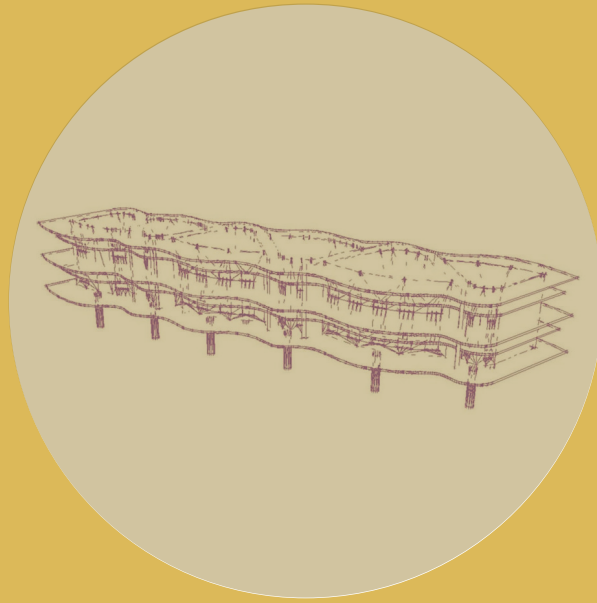
This document is Copyright ©2000-2023 by Geophilia Institute, LLC. All Rights Reserved. All the text in this document may not be copied or duplicated in whole or part by any means without express prior agreement in writing. Any redistribution or reproduction of part or all of the contents in any form is prohibited. The © Geophilia Design System is copyright of Arturo Ponce de Leon and Lydia Gian de Leon.

EXERCISES AND HAND DRAWINGS

- 100. Stroke Technique and Holographic Vision
- 101. Exercise 1: strokes with the golden number
- 102. a) golden cut line b) golden rectangle c) golden spiral
- 103. Exercise 2: traces of geometric constants: $\sqrt{2}$, $\sqrt{3}$, $\sqrt{5}$
- 104. Exercise 3: Traces of the Flower of Life
- 105. a) Genesis pattern: Seed of Life
b) Flower of Life
- 106. c) Tree of Life
- 107. d) Fruit of Life
- 108. e) 5 Platonic solids:
- 109. f) Mother Star
- 110. g) Bull pipe
- 111. Exercise 4: trace of the Pentaflor
- 112. a) Pentagon
- 113. b) Pentagraph (five-pointed star)
- 114. c) Pentaflor
- 115. Exercise 5: Strokes for Design
- 116. a) square and rectangular harmonic extensions b) rooting the line: harmonic relationship
- 117. Exercise 6: Templates of the 5 platonic solids and
- 118. Archimedean solids

HAND DRAWING FOR NUMBERS AND SACRED GEOMETRY

- 119. Archetypes of design in strokes from 1 to 10
- 120. 0. The point
- 121. 1. The one: the monad
- 122. 2. The two: the dyad
- 123. 3. The three: the triad
- 124. 4. The four: the tetrad
- 125. 5. The five: the pentad
- 126. 6. The six: the hexada (dodecagon and dymaxion)
- 127. 7. The seven: the heptad
- 128. 8. The eight: the address
- 129. 9. The nine: the ennead
- 130. 10. The ten: the decade



Module 4

BIOCLIMATIC DESIGN AND
SUSTAINABILITY



Module 4. BIOCLIMATIC DESIGN AND SUSTAINABILITY

1. Thermal comfort
2. Climate analysis
3. Lessons from the vernacular
4. Heat losses
5. Heat gains
6. Solar geometry
7. Thermal capacity
8. Insulation
9. Openings and glazing
10. Passive heating strategies
 - a) direct solar heating
 - b) solar greenhouse
 - c) solar wall
 - d) night insulation
11. Passive cooling strategies
 - a) ventilation
 - b) solar chimney
 - c) shading
 - d) ground cooling
 - e) evaporative cooling
 - f) roof cooling
12. Site planning
13. Transitional spaces: atriums, courtyards, patios
14. Ecological materials and building health
15. Natural building techniques
16. Natural lighting
17. Energy sources and energy-conserving technologies
18. Renewable energy generation: Solar, wind, hydro
19. Indoor air quality
20. Sick building syndrome
21. Reclamation and re-use of water, greywater, blackwater
22. Waste management
23. Biodiversity
24. Examples



Module 5

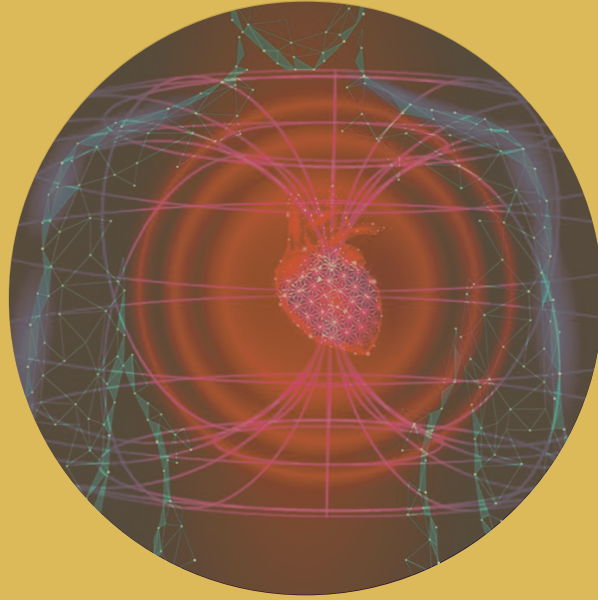
EARTH RADIATION AND GEOPHYSICAL
ANOMALIES



Module 5. EARTH RADIATION AND GEOPHYSICAL ANOMALIES

1. Electricity and magnetism: longitudinal waves and transverse waves
2. Earth's fields
3. Hartmann Palm Peyre Curry Wissmann Grid
4. Schumann resonance
5. Radiesthesia instruments: amplifiers of what the body captures
6. Geophysical Anomalies: geoelectric, geological, hydro-geophysical, and light phenomena
7. The 12 scientific aspects to understand geophysical anomalies: piezoelectric or piezomagnetic effect, hydrogeophysical phenomenon, radioactivity, geochemical gas emission, ion flow, strong magnetic, electrical or electromagnetic anomaly, strong gravity anomalies, tectonic faults, non-dipolar magnetic field, ground electric potential anomalies, geoplasma, geoneutrons.
8. Heliobiology
9. Schumann resonance
10. Scalar or longitudinal electromagnetic waves
11. The nature of Geopathic zones
12. Methods of detection
13. Medical aspects and its implications
14. The geophysical anomalies when they interact with biology
15. The human interaction
16. What are the mechanisms
17. The most important correlation and experiments
18. The effects on different systems of the human biology
19. Biological effects and geophysical anomaly types
20. The effect of geophysical anomalies on animals
21. The effect of geophysical anomalies on plants
22. The contextual embeddedness of the hormesis process
23. Effects on different systems of the human biology such as its psychology, brain, cardiovascular system, hormonal system, immune system, DNA and biorhythms.
24. The biological effects and the different geophysical anomaly types according to its nature: tectonic zones, magnetic anomaly, geomagnetic reversal, ions and geochemical anomalies.

This document is Copyright ©2000-2023 by Geophilosophy Institute, LLC. All Rights Reserved. All the text in this document may not be copied or duplicated in whole or part by any means without express prior agreement in writing. Any redistribution or reproduction of part or all of the contents in any form is prohibited. The © Geophilosophy Design System is copyright of Arturo Ponce de Leon and Lydia Gian de Leon.



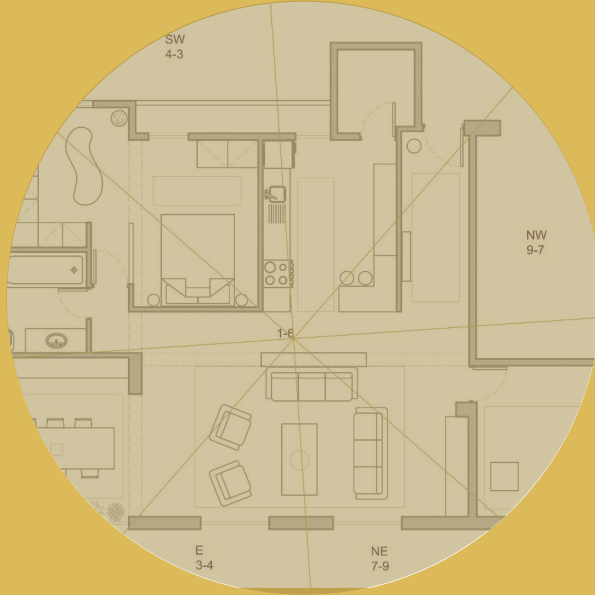
Module 6

ARTIFICIAL RADIATION AND
BIOELECTROMAGNETISM



Module 6. ARTIFICIAL RADIATION AND BIOELECTROMAGNETISM

1. Introduction
2. Magnetic fields
3. Electric fields
4. Low frequency
5. High frequency
6. The electric body
7. Positive and negative magnetic fields and their effects
8. Bioelectromagnetism
9. Subdivisions of bioelectromagnetism
10. Importance of bioelectromagnetism
11. History of Bioelectromagnetism
12. Building materials and radiation
13. Radioactivity
14. The sick bedroom
15. Protocols and devices for detection



Module 7

HARMONIC LAYOUTS AND AUSPICIOUS
DESIGN



Module 7. HARMONIC LAYOUTS AND AUSPICIOUS DESIGN

1. Feminine and masculine (yin and yang)
2. Five elements: properties and dynamics
3. Wood
4. Fire
5. Earth
6. Metal
7. Water
8. Form School
9. Siting and topography
10. Direction properties
11. East and Southeast
12. South
13. Southwest and Northeast
14. West and Northwest
15. North
16. Internal layouts
17. Five element chart
18. Building chart analysis
19. Flying star techniques
20. Objects and cures
21. Plants
22. Biogeometry design



Module 8

COMMUNITY DESIGN AND
PERMACULTURE



Module 8. COMMUNITY DESIGN AND PERMACULTURE

1. Global examples of fractal communities and alternative settlements
2. Schemes of legal constitution and social order
3. Geometric organization of the management and use of power
4. Geometric designs and what they mean
5. Alternative technologies to live in a self-dependent way
6. Permacultural design synthesized
7. Permaculture definition
8. State of the World
9. Permaculture ethics
10. Permaculture design process overview
11. Scales of Permaculture systems
12. Pattern understanding: the watershed
13. Site analysis content
14. Site analysis documentation and presentation
15. Permaculture design principles
16. Permaculture design methods
17. Scales of permanence
18. Permaculture design for drylands
19. Permaculture design for tropics
20. Permaculture design for temperate and cold climates
21. Holmgren's 12 Principles and their correlation to Mollison's Principles
22. Climates, Biogeography and Microclimates
23. Design Methods and Process
24. The Home System
25. Water: the hydrologic cycle; Conservation, water's functions, matching quality to use; Water harvesting and storage in built containers, in ponds, and in ground; Tropical, arid, and temperate strategies; Earthworks; Keyline design, micro-catchments, gabions, and check dams; Use of levelling instruments and construction of swales; Design and construction of earthen dams and ponds
26. Soils: Soil biology and function in the ecosystem; Soil texture, structure, classification, and testing; Fertility management and soil repair
27. Trees, Forests, Plants, and Cultivated Ecologies: Architecture, growth, and function of trees; placement and role of forest; Agroforestry, tree crops, multifunctional hedgerows, and orchard design.
28. Animals: Designs that integrate plants and animals (alley cropping, rotational grazing, etc.); Roles and habitats of small and large livestock; General husbandry: Food, hygiene, health care, protection, reproduction; Breed selections: Needs, yields, and characteristics; Land management
29. Aquaculture: Aquatic ecology: Trophic food web, limiting factors, and design criteria; Chinampas and other cultivated aquatic ecosystems; Aquaponics; species choices



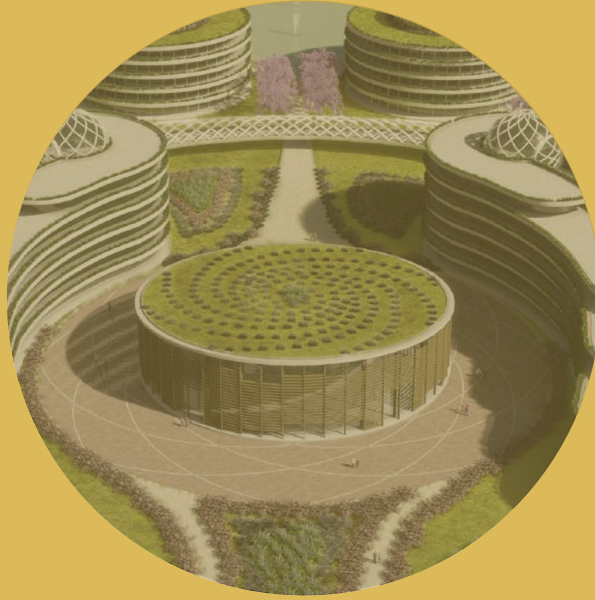
Module 9

ANCIENT TEMPLES: PROPERTIES AND
FUNCTION



Module 9. ANCIENT TEMPLES: PROPERTIES AND FUNCTION

1. Earth connection properties
2. Hormesis
3. Classification of ancient monuments
4. Mounds Megaliths and Stone Circles
5. Pyramids
6. Ancient Greek Temples
7. Using geophysical maps and analysis of temples
8. Building body properties
9. Materials
10. Shape and geometry
11. Acoustics
12. Sky connection properties
13. Archeoastronomy
14. The possible functions of ancient monuments



Module 10

BIOFRACTAL DESIGN PROCESS FOR
ARCHITECTURAL PROJECTS



Module 10. BIOFRACTAL DESIGN PROCESS FOR ARCHITECTURAL PROJECTS

1. Amma Center: built with superadobe.
 - a) Studies of people and diagnosis of the terrain
 - b) Architectural Plans
 - c) Biological Capacitor Plans
 - d) Cosmoteluric Plans
 - e) Structural Plans
 - f) Interior Design
2. Aiki Center and Temple Lotus of the Heart, double torus based.
3. Montessori Bioss Lilah School, built with bamboo, cob and all natural material
4. Askha - Restaurant
5. Fortunata - Therapies Center
6. BAK - Restaurant
7. Joy - House
8. Mondragón - House
9. Yanay - Ecoboutique Hotel
10. Lawan - Art Center
11. Native Land - House
12. Zero Point - Holistic Center
13. Maya Temple
14. Origin – Department
15. Garduño - House Room
16. Finca Aine – Ecologic Ranch
17. Michael Rice approach to architecture
 - a) Genesis
 - b) The Fox
 - c) Triple Octa
 - d) Harmony Hall
 - e) Squaring the Circle
 - f) The flame
 - g) Prime
 - h) The eye
 - i) House Heath
 - j) Gothic
 - k) Project Mexico
 - l) Vesica Projects
 - m) Triada Projects
 - n) Tetrada Projects
 - o) Pentada Projects
 - p) Hexada Projects
 - q) Heptada Projects
 - r) Decada Projects
 - s) Dodecada Projects
 - t) Spiral Projects
 - u) Rectangles Projects

This document is Copyright ©2000-2023 by Geophilosophy Institute, LLC. All Rights Reserved. All the text in this document may not be copied or duplicated in whole or part by any means without express prior agreement in writing. Any redistribution or reproduction of part or all of the contents in any form is prohibited. The © Geophilosophy Design System is copyright of Arturo Ponce de Leon and Lydia Gian de Leon.



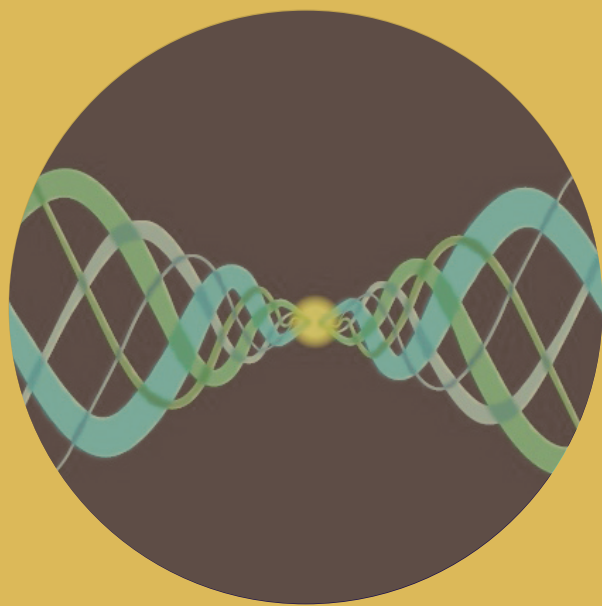
Module 11

EPIGENETICS AND THE BUILT
ENVIRONMENT



Module 11. EPIGENETICS AND THE BUILT ENVIRONMENT

1. The Science of Epigenetics
2. Cell biology and the DNA
3. The role of proteins
4. The cell as a miniature human
5. The role of a cell environment
6. The cell membrane
7. Growth and protection
8. Constructive interference
9. Emotions: the language of cells
10. The building and the city as cell environments
11. Blue zones research for longevity
12. Environmental medicine



Module 12

THE SCIENCE OF SPACE HARMONICS



Module 12. THE SCIENCE OF SPACE HARMONICS

1. Experiments in animals, plants and water
2. How to balance geophysical anomalies
3. How to harmonize artificial electromagnetic stress
4. How to increase fractality with sacred geometry
5. How to increase fractality with materials
6. How to creating centering energy with biogeometry
7. How to create higher space harmonics with objects/devices
8. How to create higher space harmonics with music/ infrasounds
9. How to measure a sacred space



Geophilosophy

CONSCIOUS ARCHITECTURE FOR THE FIVE LEVELS OF BEING

