



Geophilia

CONSCIOUS ARCHITECTURE
FOR THE FIVE LEVELS OF BEING



Geophilia Institute

Geophilia Institute is an entity created for the scientific research of Space Harmonics.

Its main objective is to link Architecture, Geophysics and Biomedicine, designing buildings according to the principles of Sacred Geometry, Bioclimatic Design and Natural Building Materials.



Geophilia Academy

Geophilia Academy is created to provide Holistic Knowledge Education through online course, live events and 1-1 mentorship.

Learn about the Science of Space Harmonics, geophilic design, The Sacred Science of Ancient Temples and Sacred Geometry.



Geophilia Architecture

Geophilic conscious spaces are designed for wellbeing in the vital, physical, emotional, intellectual and spiritual level.

The goal of the Geophilia Design System is to bring in harmony the Client, the Land and the Building.



Services

1. Architectural Design
2. Education and Research
3. Consulting for developers
4. Supervision and Construction
5. Branding and Logo Design



FOUNDERS



**Lydia Isabel de León, Ph.D. in Geobiology, Architect, MSc in Sustainability
- Greece**

is a Greek Architect and Wellness Coach, with a focus on the relation of buildings on health and well-being. She holds a Ph.D in Physiology on the subject of the effect on geophysical anomalies on biology and has published in peer-review journals and conferences. She has been researching for 15 years the relation of ancient temples and their location. She is the creator of Healing Architecture and cofounder of Geophilia Institute.



Arturo Ponce de León, Architect, Engineer, Psychologist - Mexico

is a Mexican Architect, Engineer, Psychologist and expert in Sacred Geometry, which he has been teaching for 20 years and applying to architectural design in all scale projects. He is founder of the companies Psicogeometria, Arqka and the University of Sacred Geometry and cofounder of Geophilia Institute. He is the author of two books, " Psicogeometria: el poder de la vida" (Psychogeometry: the power of life) . (2004) and Biofractal: the science of Sacred Geometry and Biological Architecture" (2016) . He is an international speaker in universities, conferences and seminars.



MEMBERS



Nassim Hamein, Scientist, Resonance Institute - USA

is a researcher of the universal dynamics of matter and energy, which led him on a journey toward pioneering a new approach to quantum gravity and continual developments in unified field theory. Nassim dedicated most of his time to his independent investigation into physics, geometry, chemistry, biology, consciousness, archeology, and various world religions. Hamein's dedication to scientific exploration combined with his keen observation of the behavior of nature led him to a specific geometric pattern which is at the core of his approach and new perspective in unified field theory.



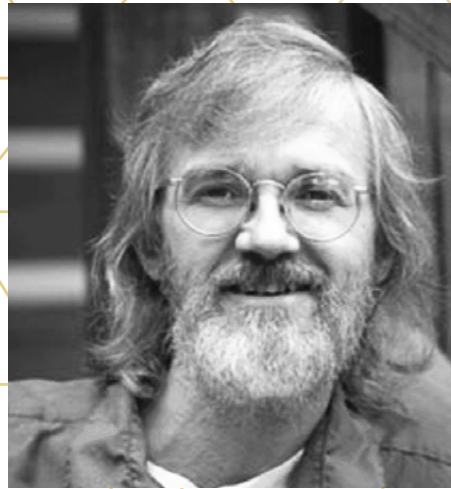
Aggelos Evangelou, MD, Professor of Medicine - Greece

is a retired professor and emeritus of Physiology at the University of Ioannina, Greece. He has conducted specialized research on the effect of electromagnetic fields, both on their negative effects and on the ways in which they can be used to cure chronic diseases. He has been scientific director of 11 national and 9 international projects. He has more than 110 publications in international journals and more than 360 publications in national journals, abstract books and proceedings of national and international congresses.



Stavros Papamarinopoulos, Professor of Geophysics - Greece

is a professor of Geophysics at the University of Patras, Greece. He has done postdoctoral research at the Universities of Cardiff, New Castle and Oxford, has a PhD in Geophysics from the University of Edinburgh in the UK and a BA in Physics from the University of Athens. He has conducted more than 250 geophysical investigations in Greece, England, France, Spain, Russia, Central Asia, Russia, Northeast and Northwest Africa, trying to locate ancient buried cities. He has published over a hundred scientific articles with numerous citations.



Dan Winter, Scientist, Inventor - USA

is an Electrical Engineer, graduate with honors from the University of Detroit. Dan pursued graduate studies in psychophysiology and the origin of languages. In addition to his academic background, he has worked as a Systems Analyst with IBM, an industrial metallurgist and crystallographer. He has undertaken many diverse studies, from quantum physics to modeling at the MIT space lab to developing the early biofeedback prototype equipment as Dr. Albert Axé's protégé. Widely traveled, Dan has sojourned to study at the Gurdjieff School of sacred gymnastics, in Florence with Buckminster Fuller, the Gizah pyramids, Israel, the Andes and at Findhorn.



Elvira Riego, Social Worker, Geometrician - Argentina

is an expert Geometrician and technical designer, specialized in the area of Architecture and Geometry with more than 15 years of investigation of the divine human design, the energetic systems and its link with Sacred Geometry. She studied as a Social Worker at the National University of Cordoba in addition to Chinese Medicine, Shiatsu massage, gemmotherapy, Yoga, Taichi Chuan and Chi Kung. She has written two books: " Descorriendo los veelos" (2006) and " El Camino de la Rosa" (2012) . She is a consultant and researcher and has transformed Crop Circles into art.

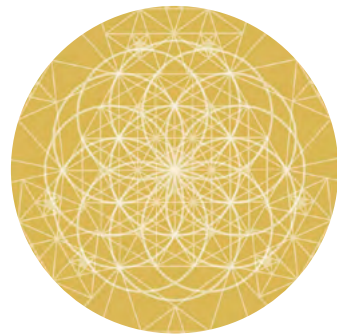
GeoΦhilia Institute gathers more than 100 years of knowledge and experience of the different companies and researches of its members. Books, publications and projects carried out under the same vision.

The whole is greater than the sum of its parts
- Aristotle

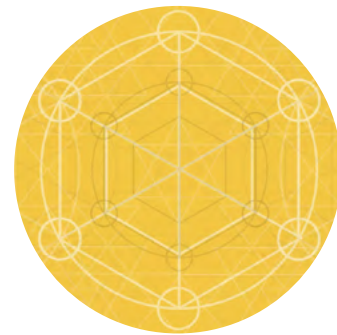


GEOPHILIA DESIGN SYSTEM

Pillars of Geophilic Design



Sacred Geometry
+ Fractal Design



Integration of
Client Analysis



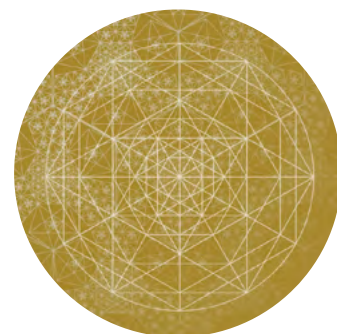
Auspicious Layouts



Radiation +
Remediation



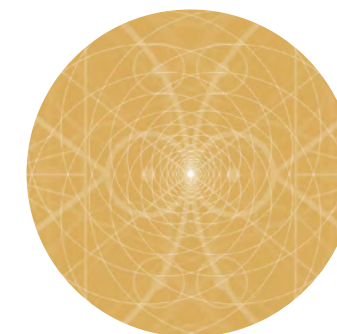
Bioclimatic Design
+ Sustainability



Permaculture
+ Biomimicry



Conscious
Community Design



Transformative art
+ Space Harmonics

The Five Stages of the Geophilia Design System

1. CLIENT ANALYSIS & RESEARCH OF THE PROJECT

Includes an in depth analysis of the people involved in it to allow conscious choices in the design phase in a way that they best support the client.

2. DIAGNOSIS OF THE LAND

Includes a detailed analysis to location areas of possible development, geophysical anomalies, location of ideal areas for construction and distribution of spaces.

3. PRELIMINARY ARCHITECTURAL DESIGN

Includes Holistic Masterplanning, Sacred Geometry integration and Biogeometry, Auspicious layout, Bioclimatic and passive design strategies, Permaculture & Biomimicry design, Ecological and sustainable material selection as well as Cutting edge technologies to improve space harmonics.

4. EXECUTIVE PROJECT

The Executive Project consists of the architectural plans for the execution of the construction with final dimensions and the type of construction of all the elements of the structure.

5. CONSTRUCTION PHASE

In this stage we can help in increasing the Space Harmonics even further with the introduction of special Fractal additives and the of Transformative art.



Offerings

1. Consulting on land selection/ existing building selection
2. Client analysis through various techniques
3. Earth radiation analysis & optimum location choice
4. Redesign of existing building spaces
5. Holistic Masterplanning
6. Architectural Design for new building spaces
7. Custom Transformative Art
8. Mission activation in an architectural space
9. Cutting edge technologies to improve space harmonics consultation
10. Photorealistic rendering

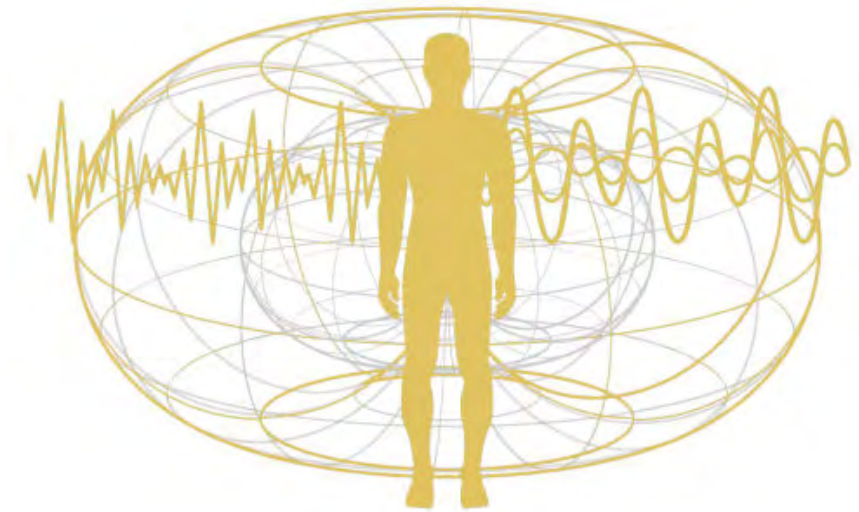



SPACE HARMONICS SCIENCE

The greek root *geo* means earth, gea, gaia; *philia* means love, friendship and, harmonic relations.

Geophilia is the science of improving the coherence of your internal and external space.

Yes, both the psychological and the physical space, the subjective space that inhabits us and the objective space that surround us.

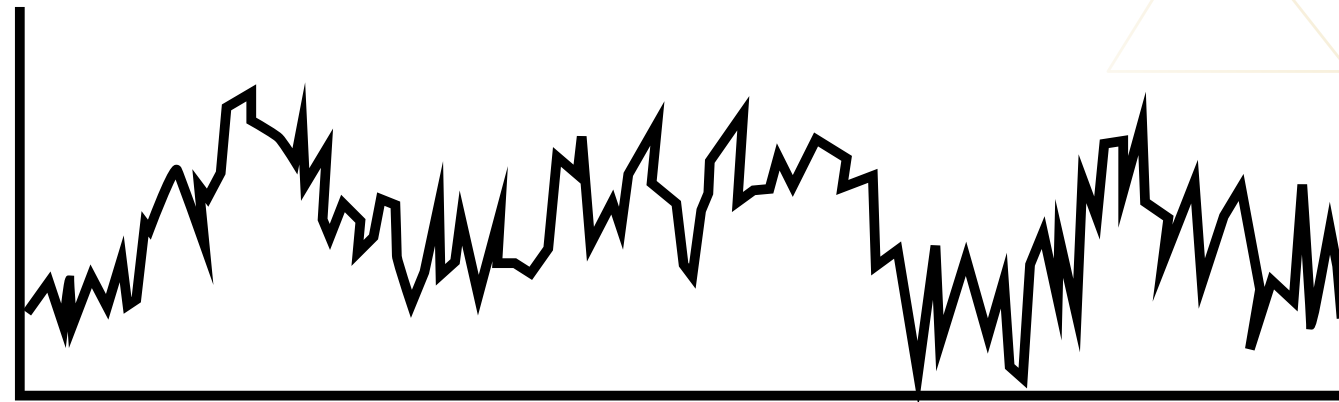


The background features a complex geometric pattern of overlapping golden triangles. A prominent Sri Yantra symbol, consisting of nine interlocking triangles that radiate from a central point, is visible in the upper-middle section. The overall aesthetic is clean and mathematical, with a warm golden-brown color palette.

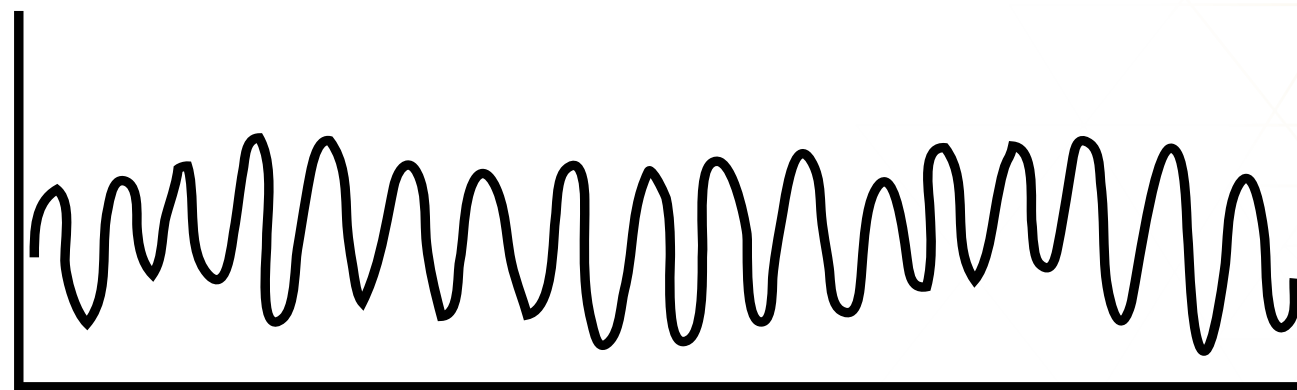
For **25 years** we have been researching the deep truth of what makes us happy, healthy and wealthy. We found some answers in the scientific world and others in eastern philosophical practices.

Luckily, we are now living in an era of massive amount of information and that help us discover what is the missing link between our internal space (from our skin and inside) and our external space (beyond our skin): ***a fractal space.***

Technically speaking it is called "harmonic wave interference", in layman's term a harmonic space.



Normal construction



Geophilia construction

Fractal space is the missing link of your internal and your external world. And that is so important and crucial to realize because our health depends on the way we embed or not the inside and the outside.



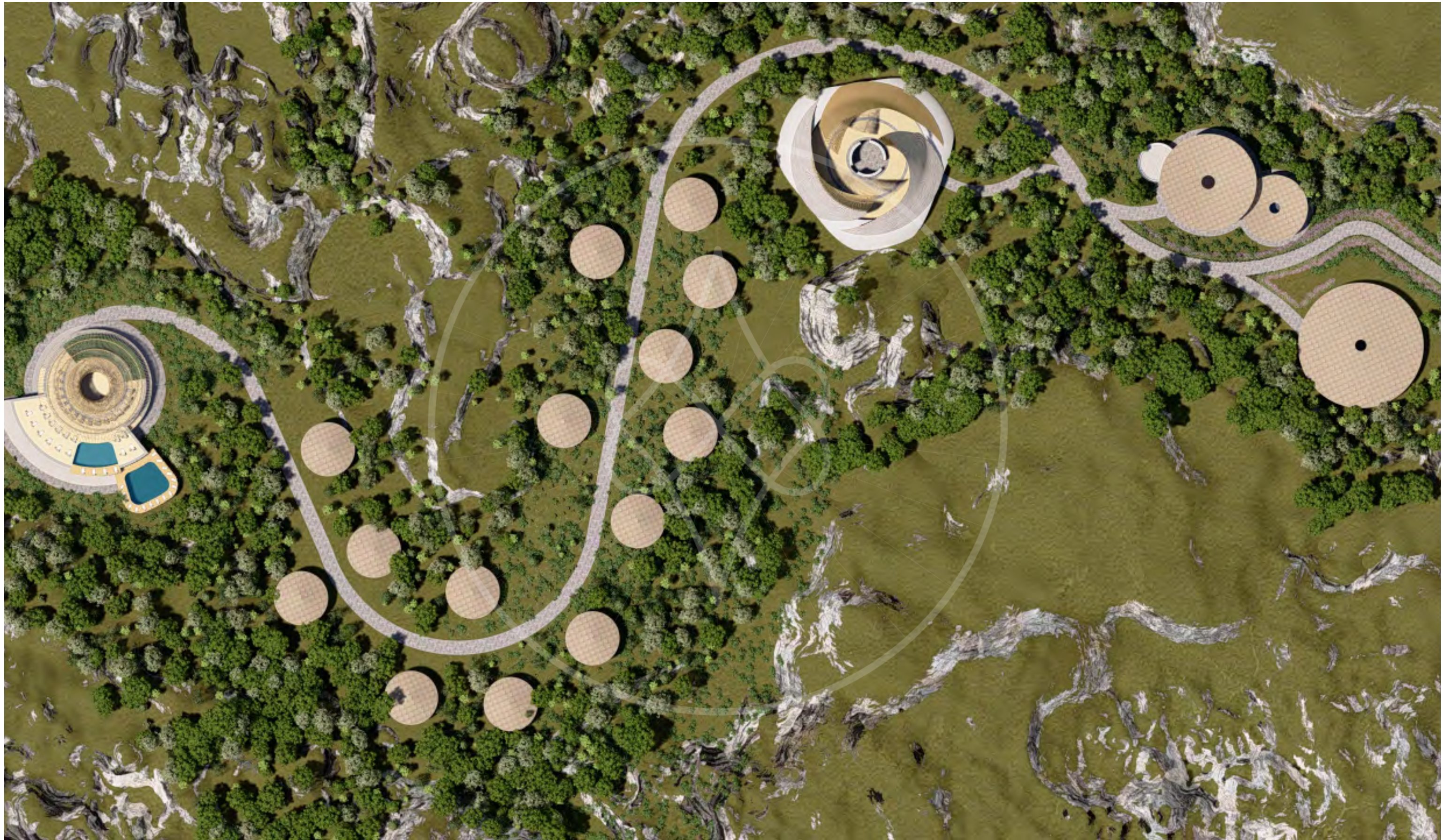
***Welcome to the New Era of
Healing Architecture!***



FEATURED PROJECTS

MASTER PLANNING



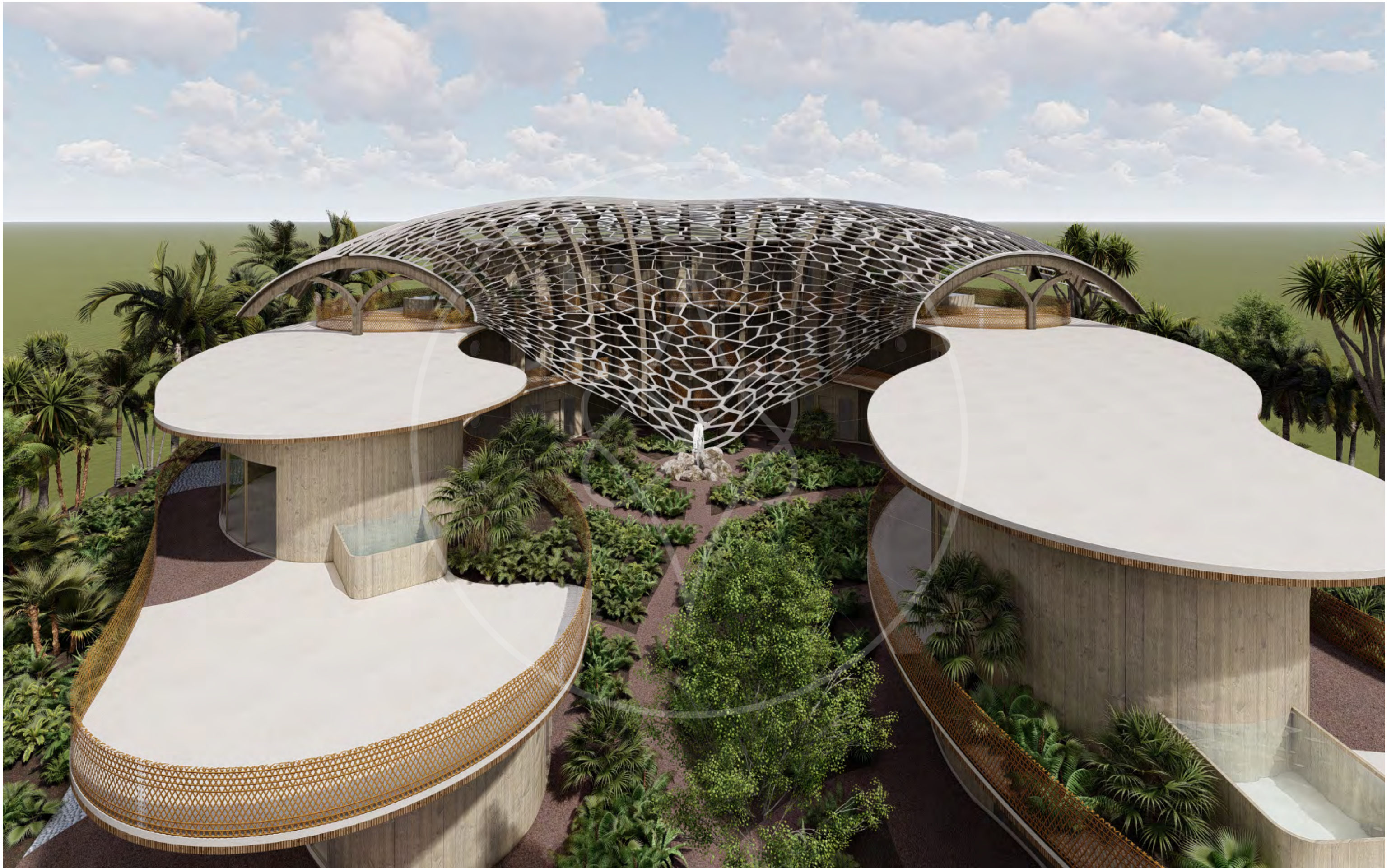




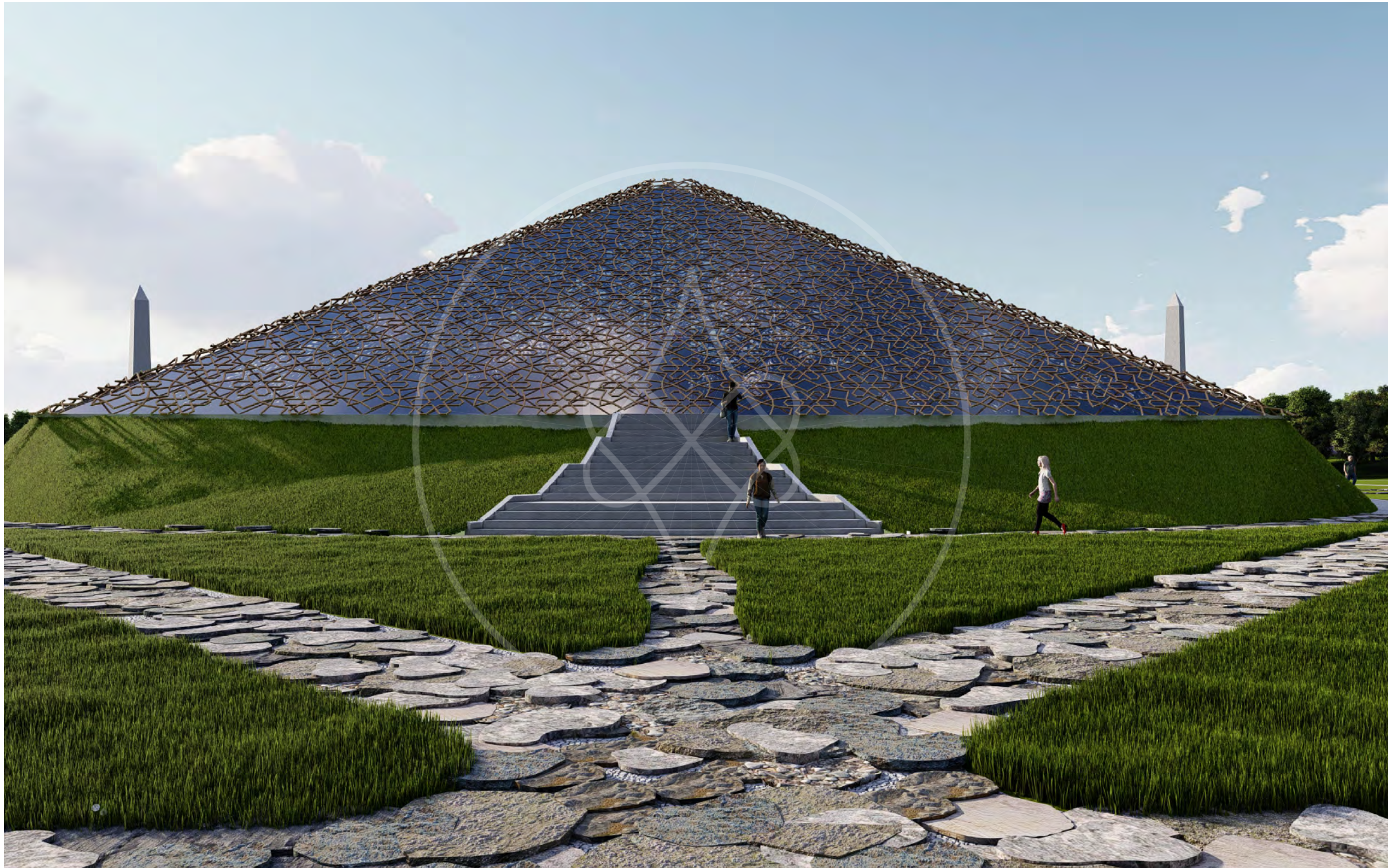








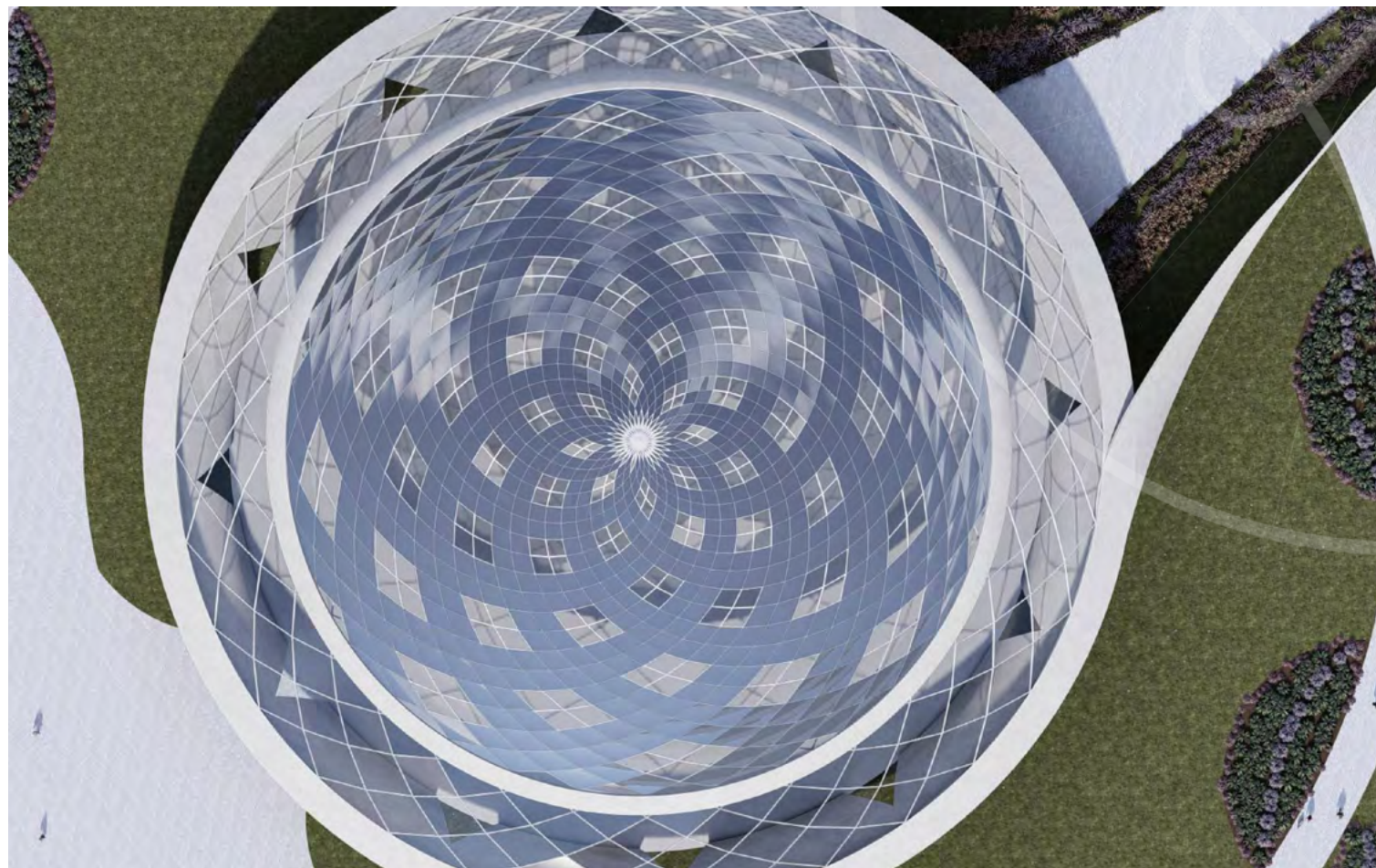
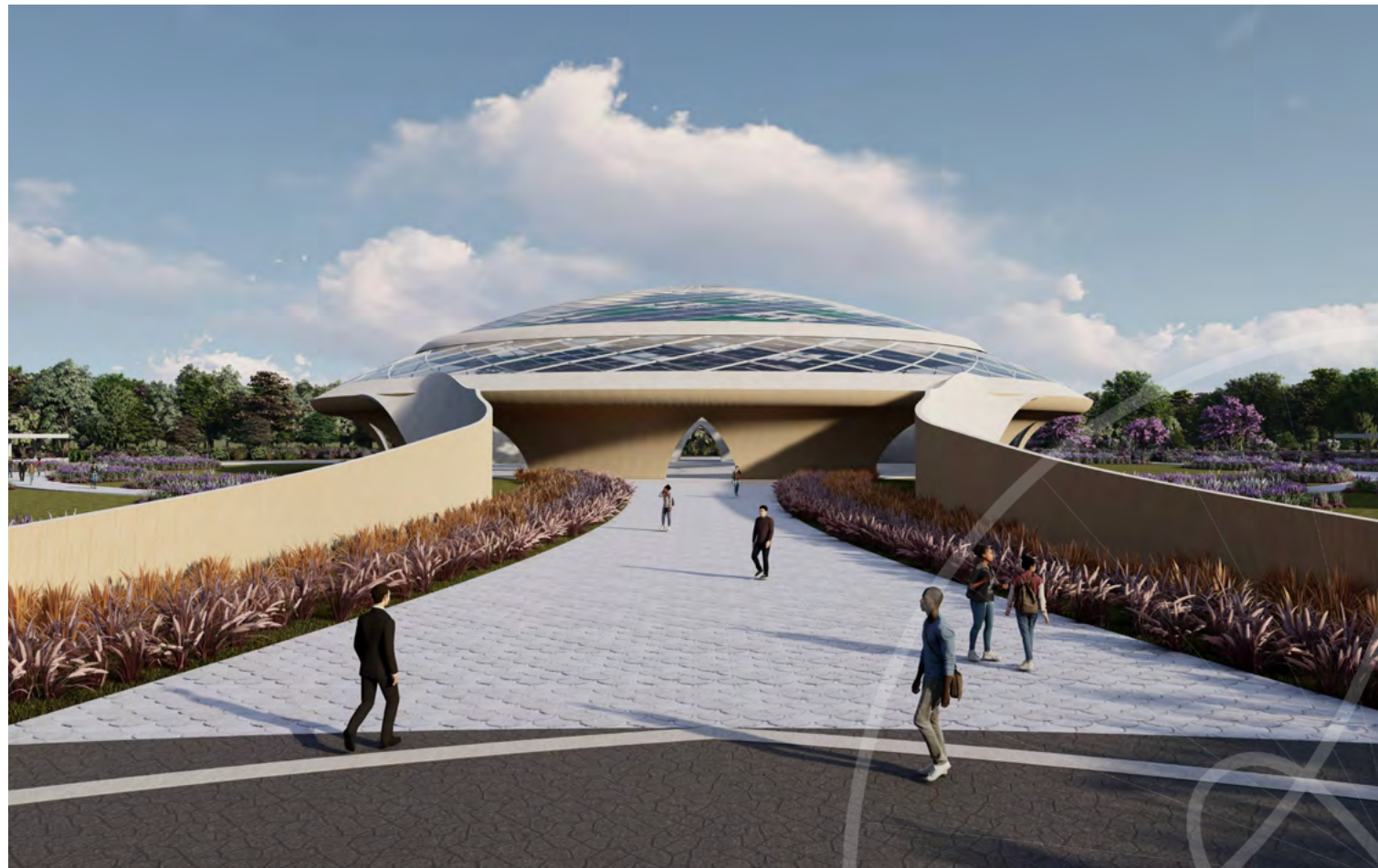
































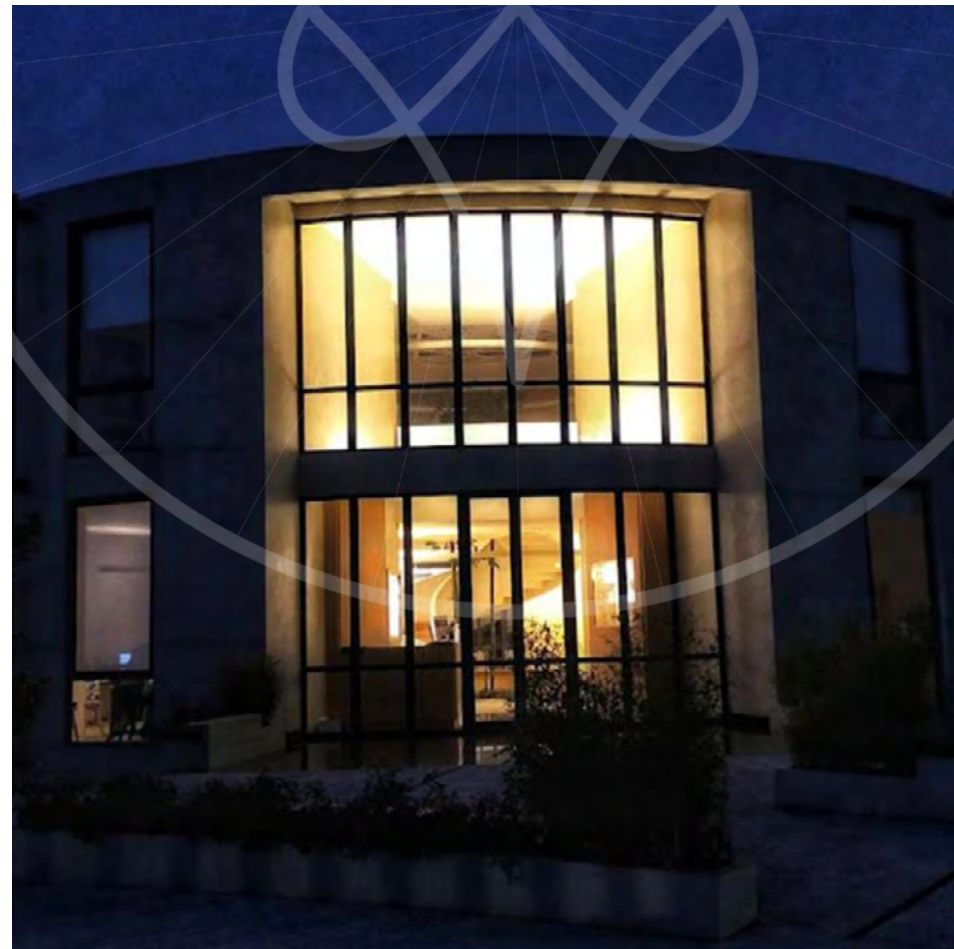








HEALING CENTER



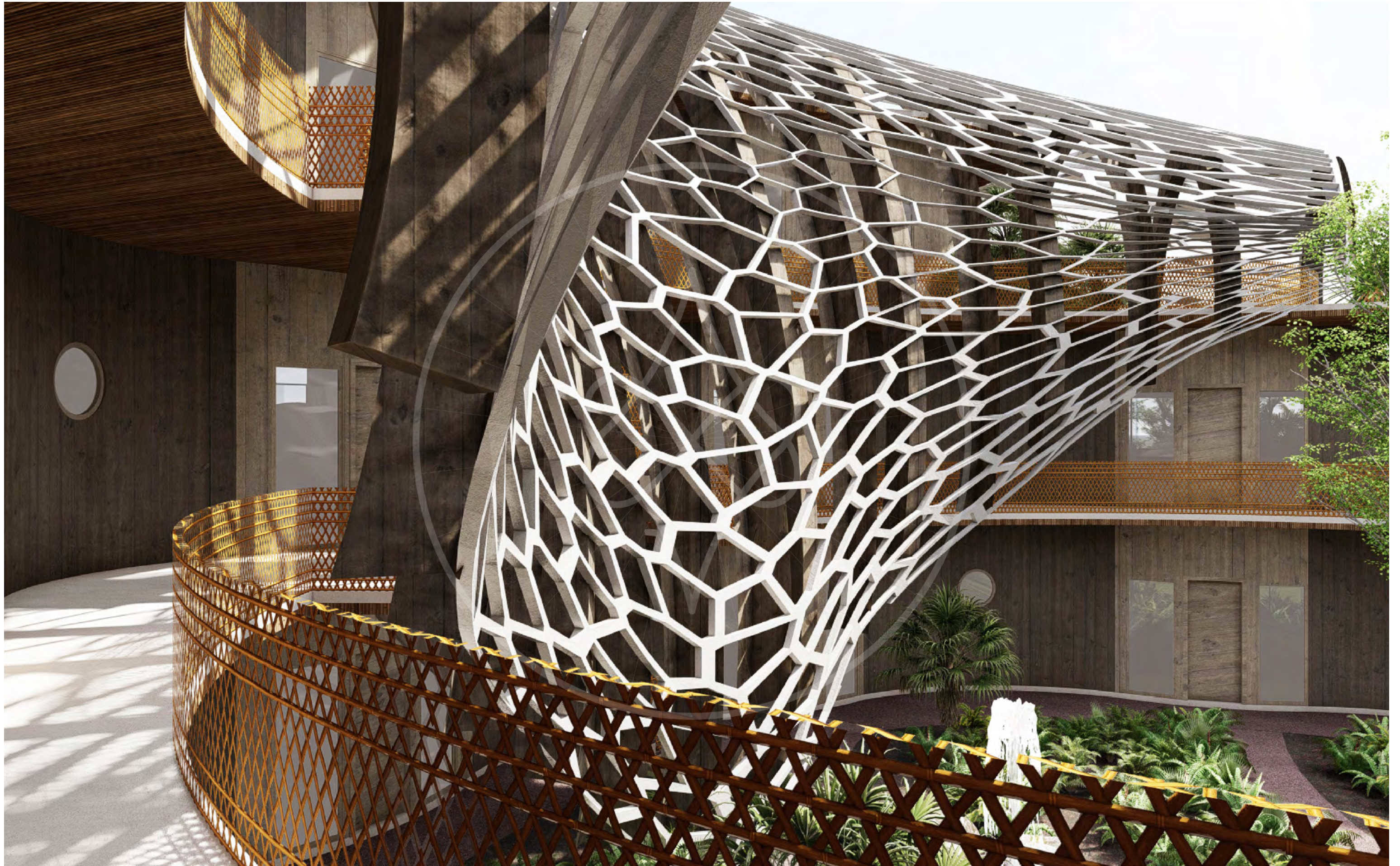






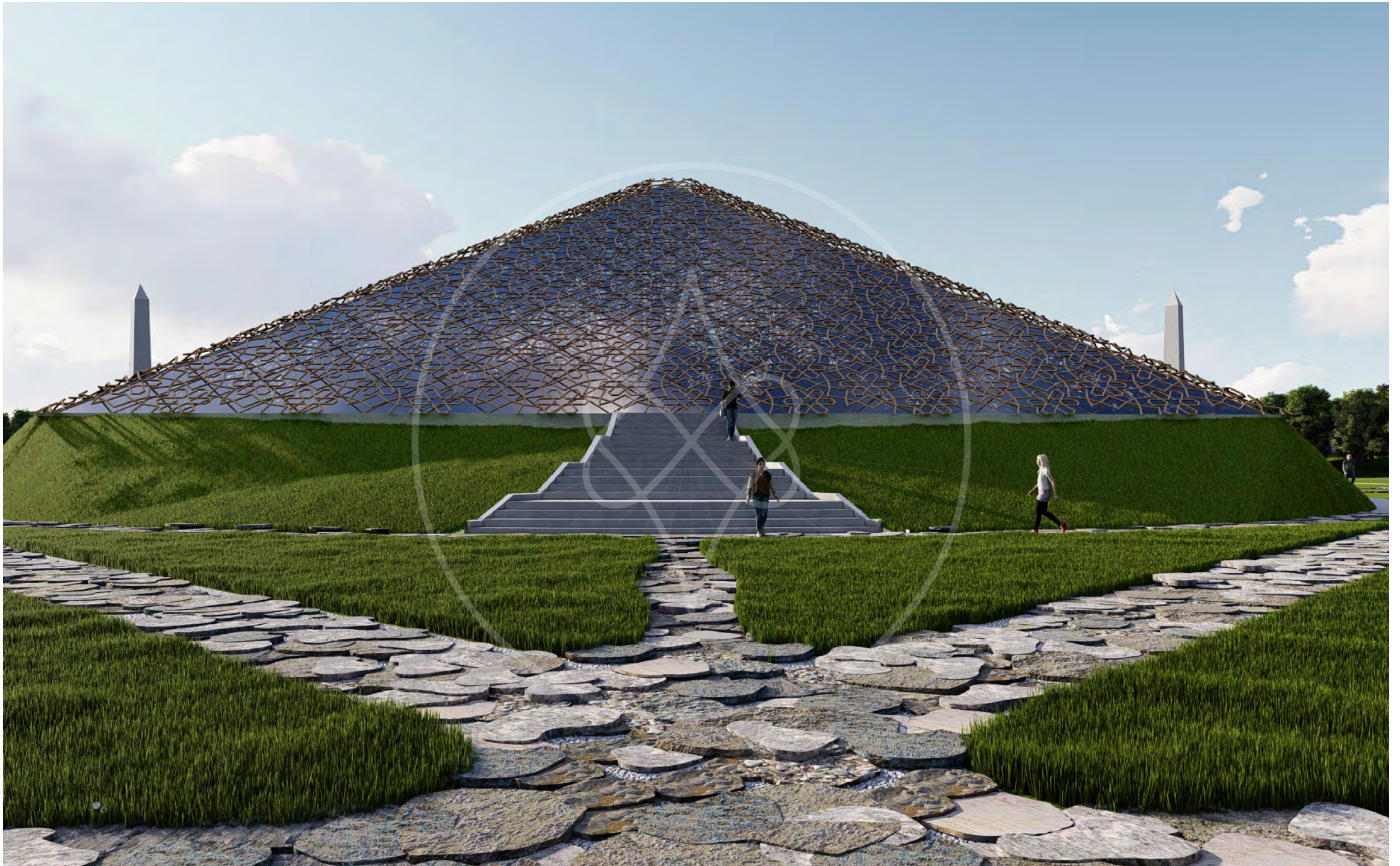




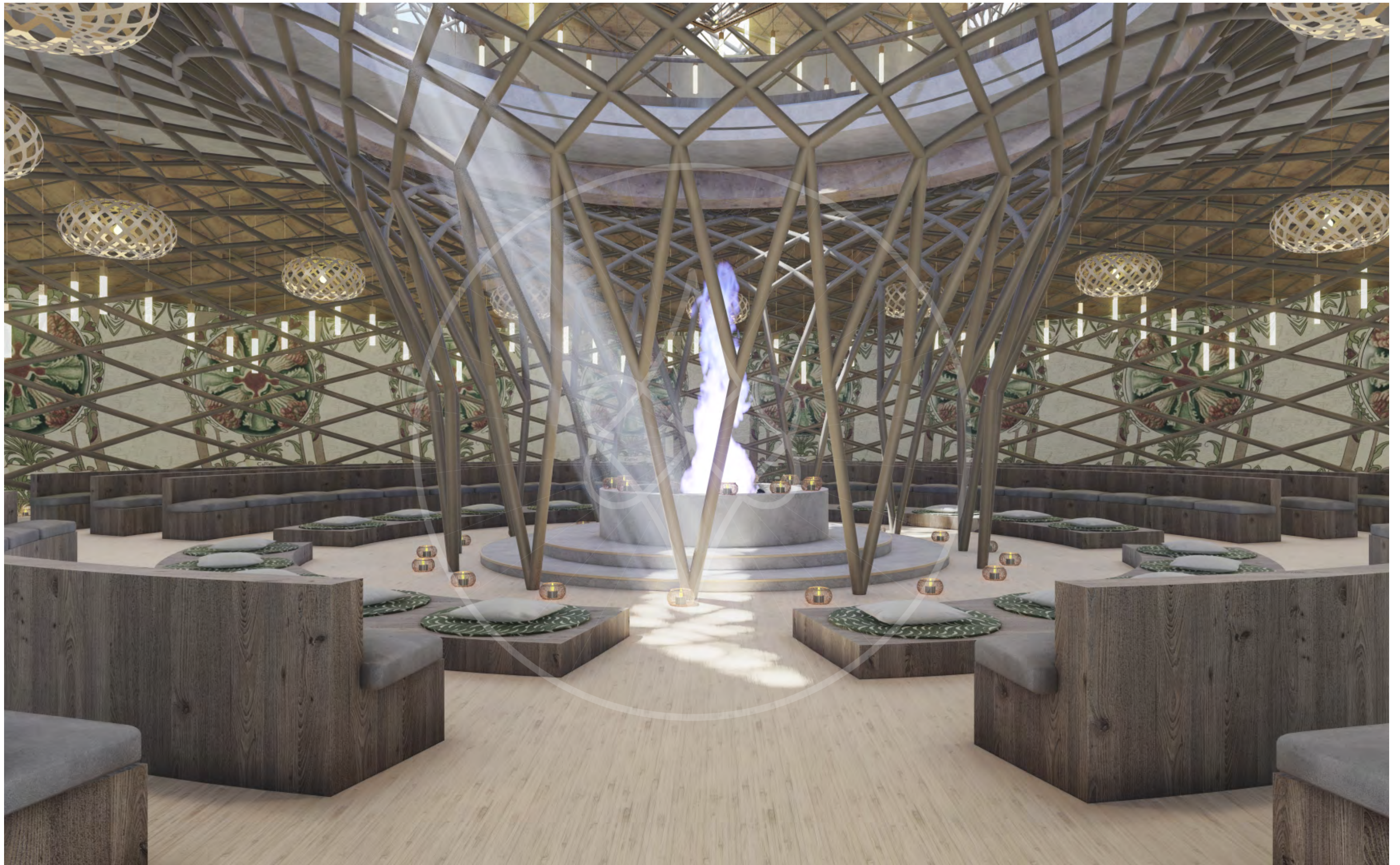






































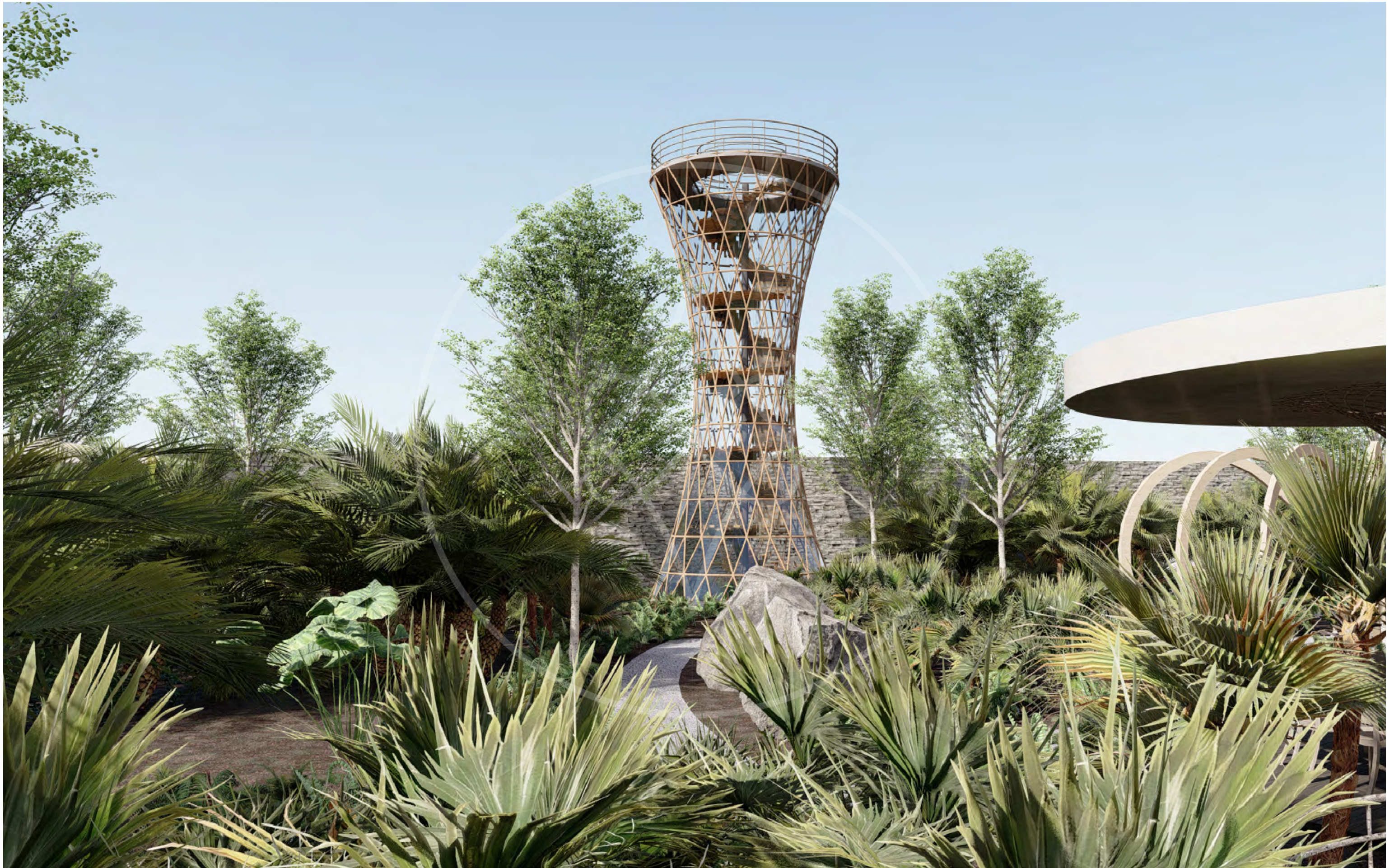










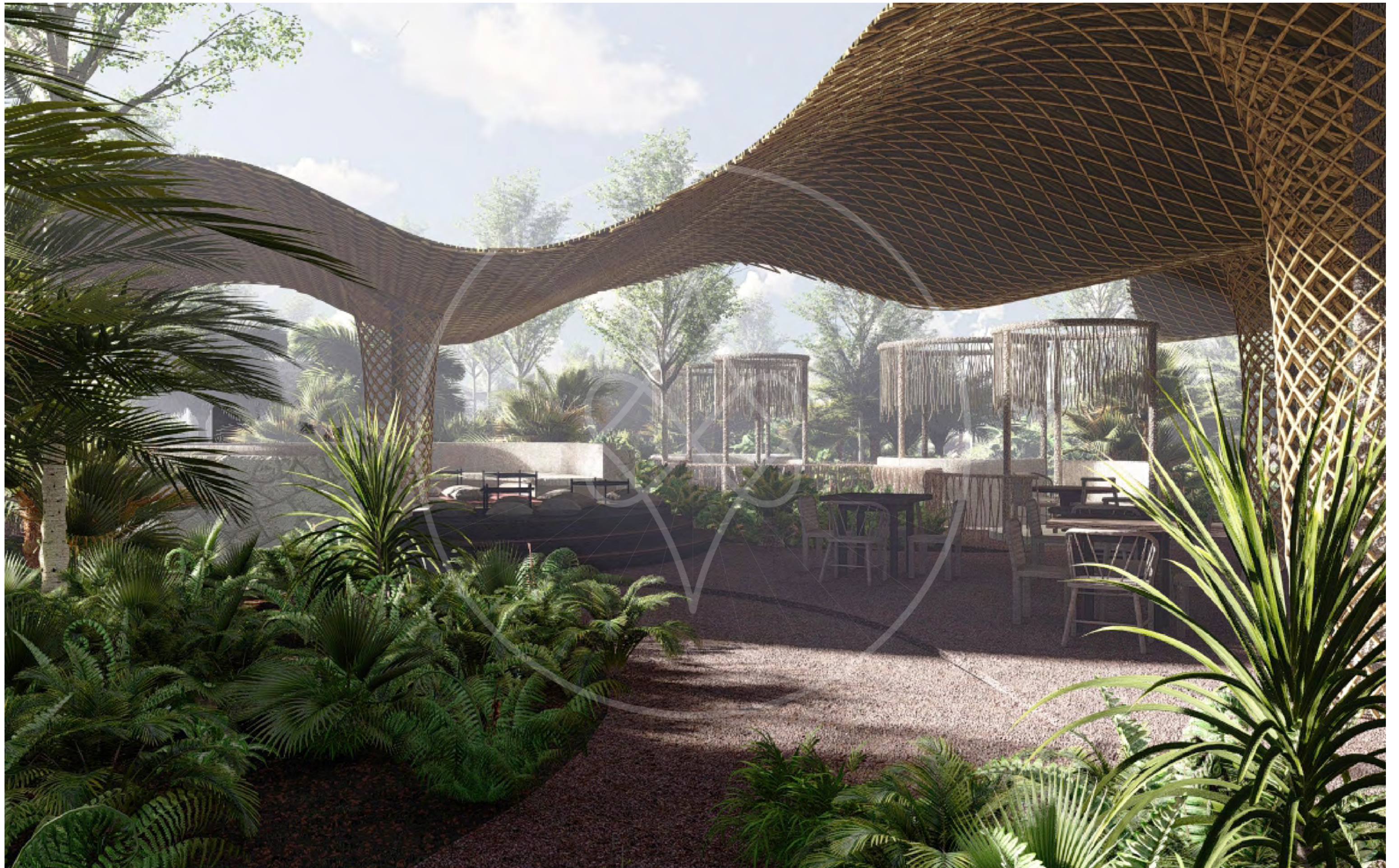


























RESIDENTIAL



























































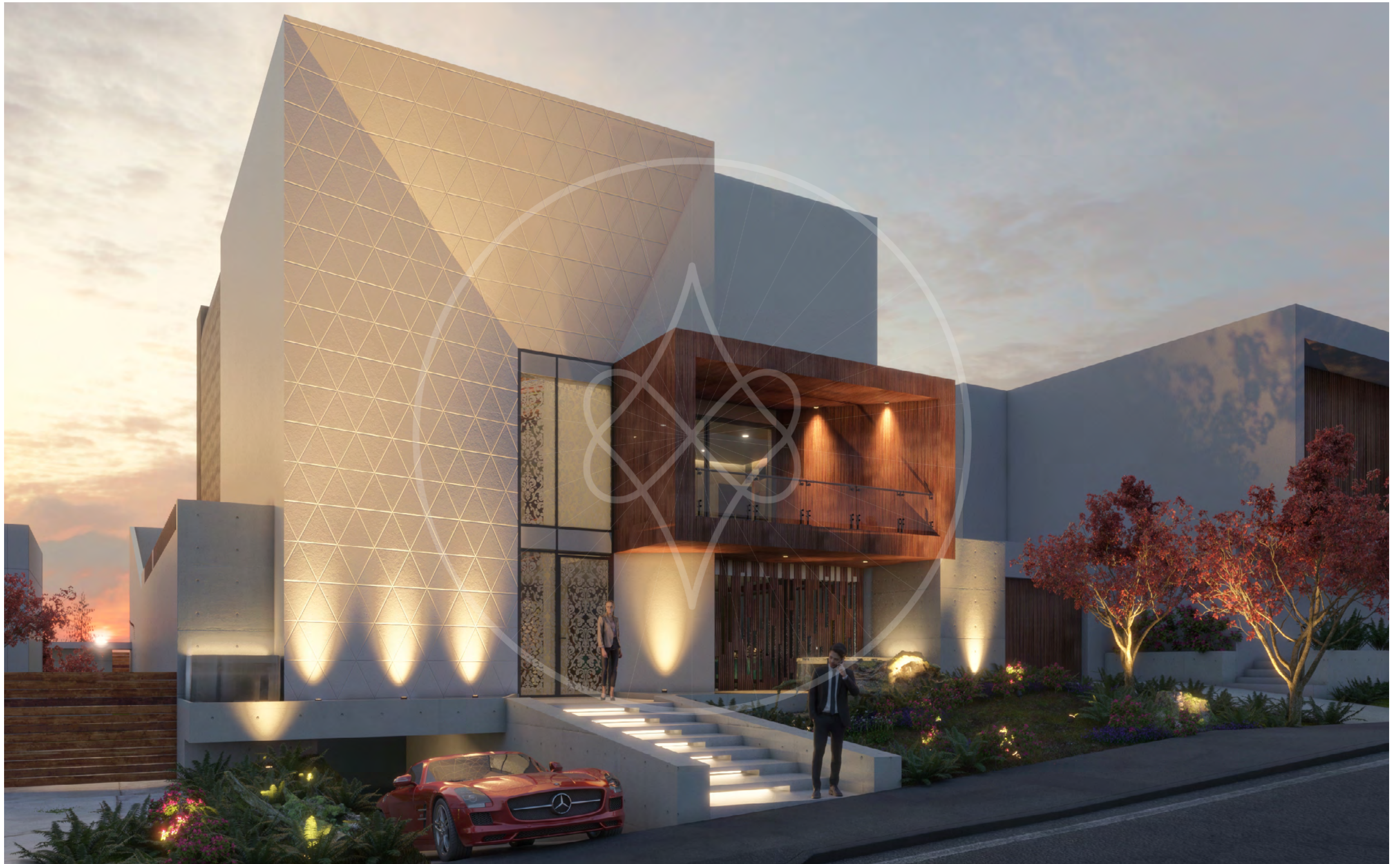


















INTERIOR DESIGN































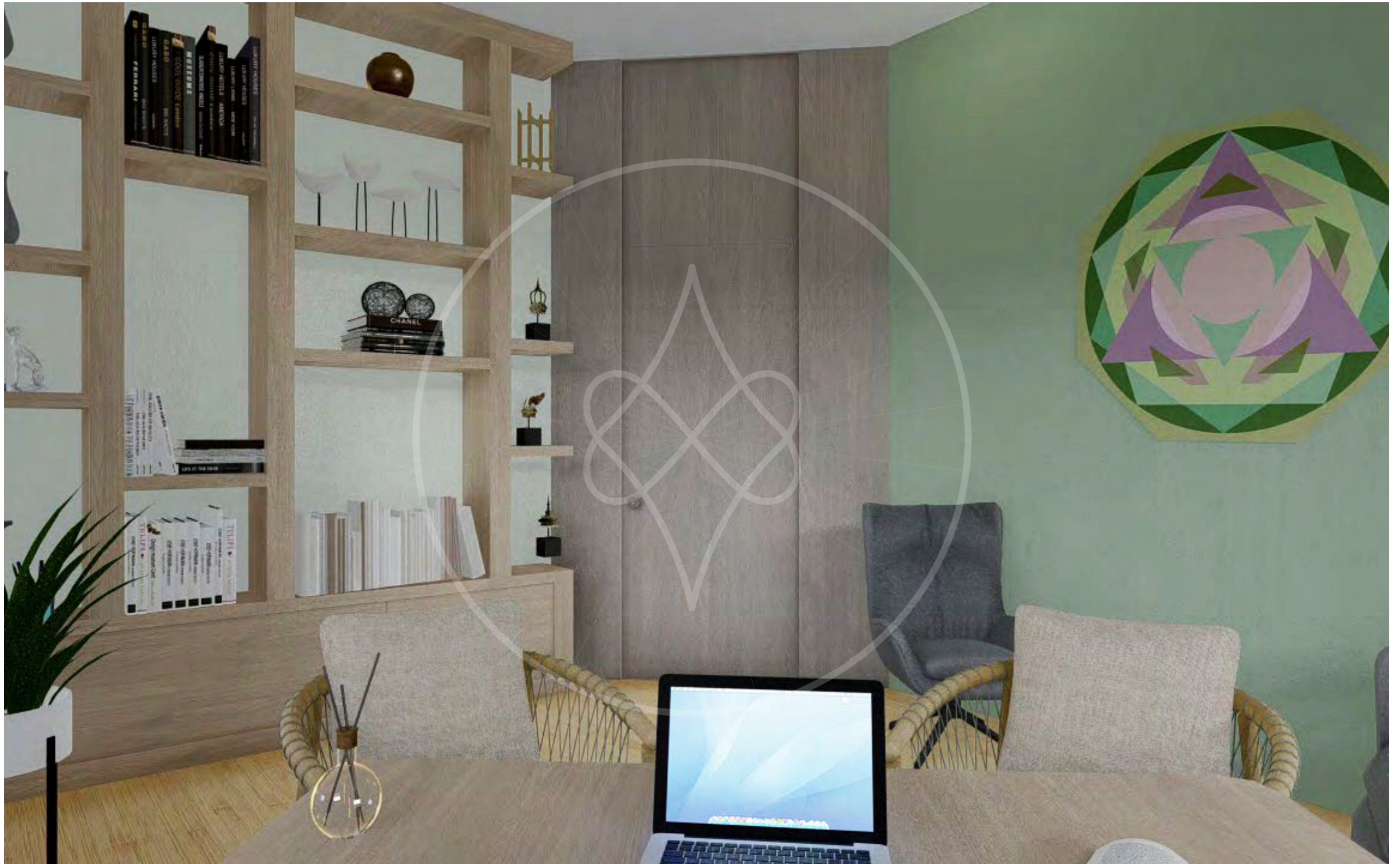


















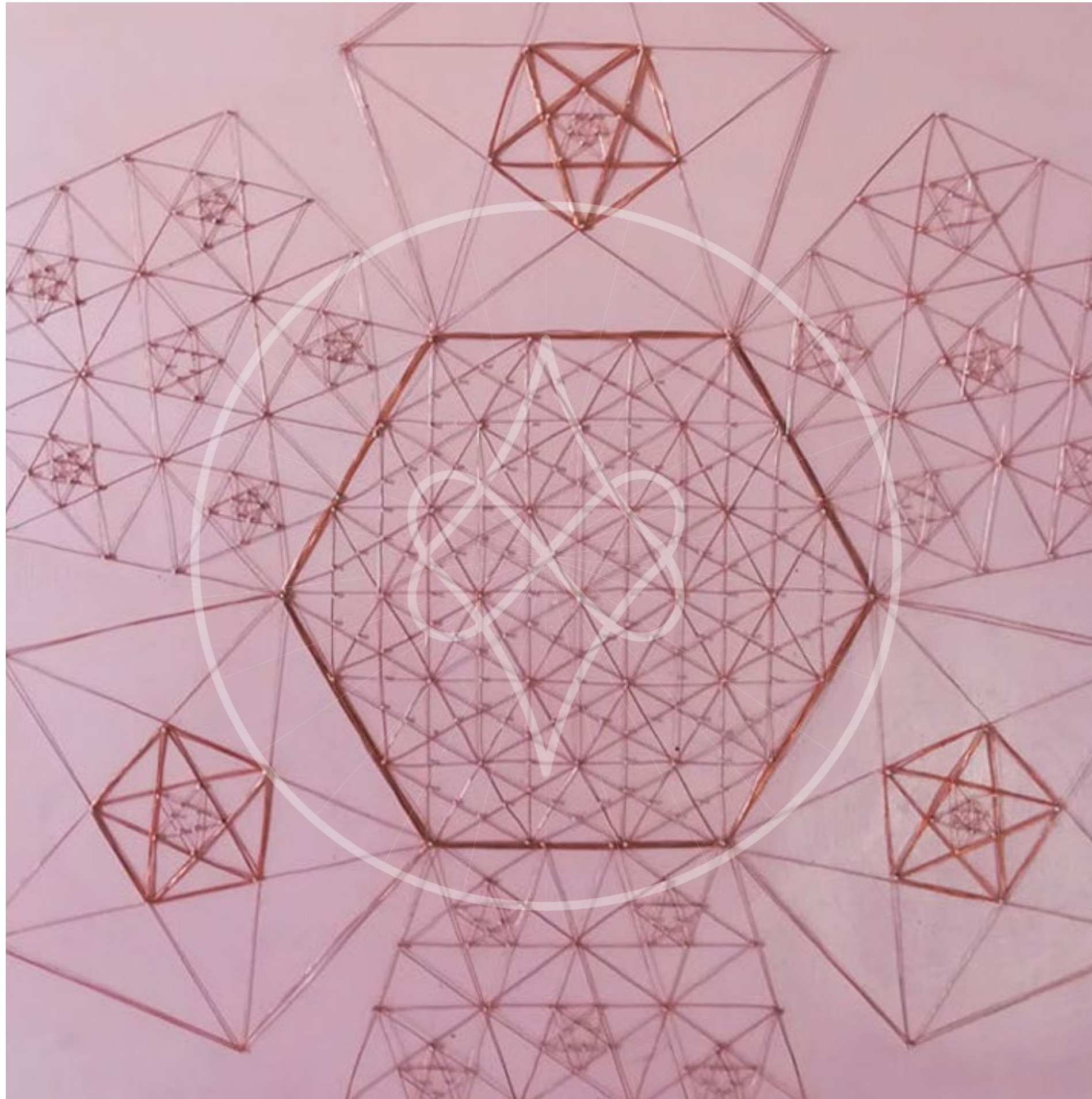


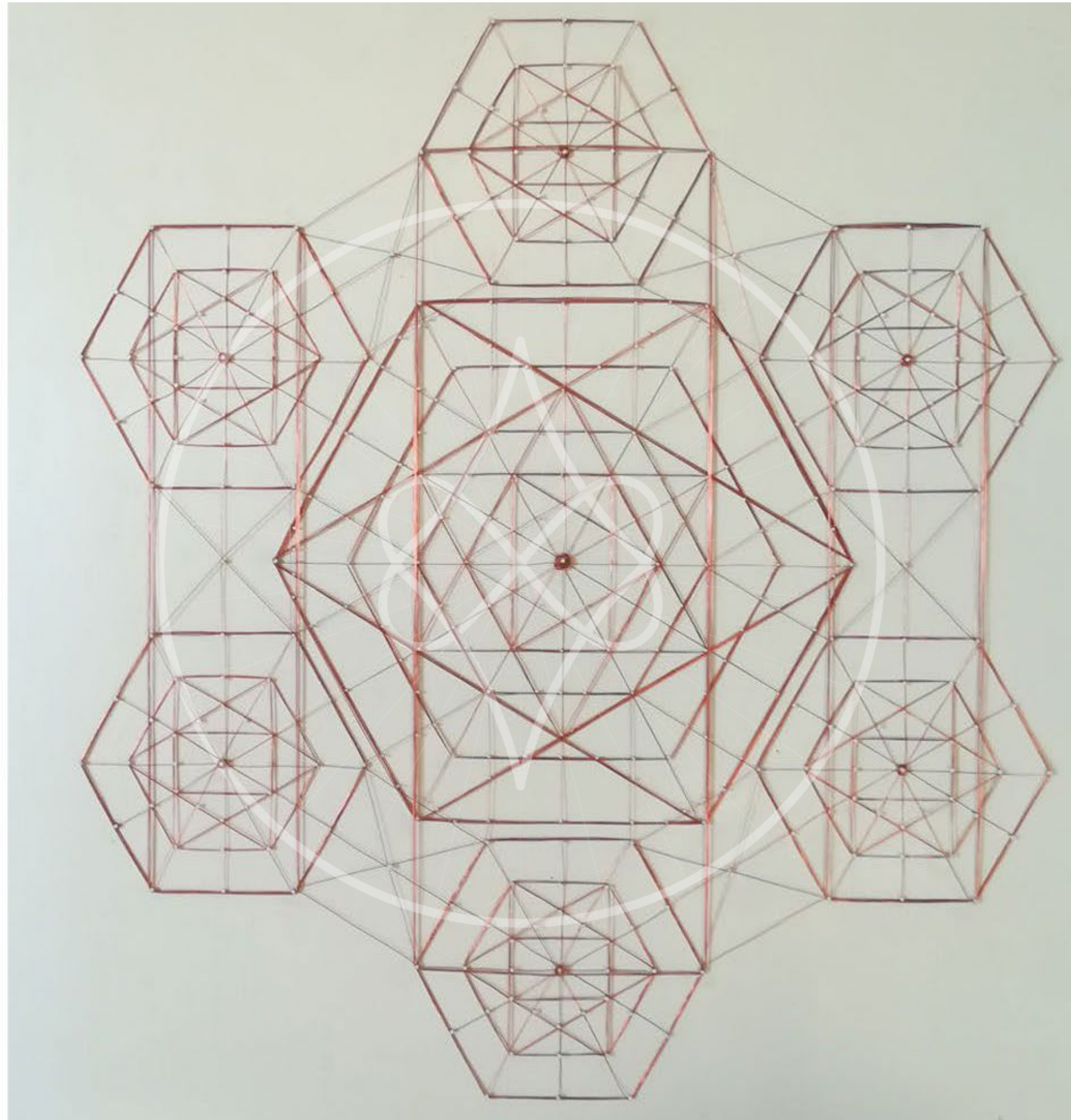


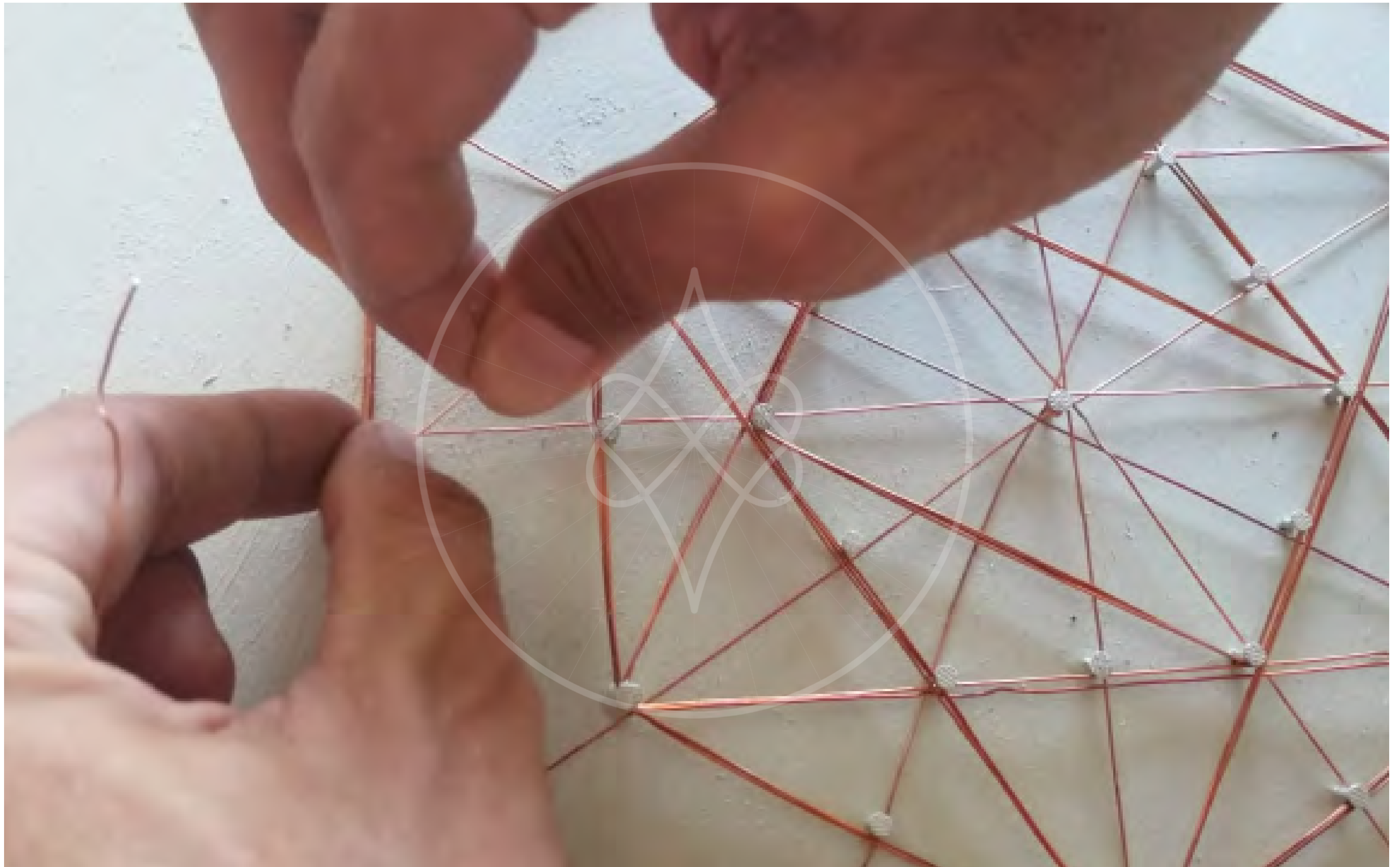




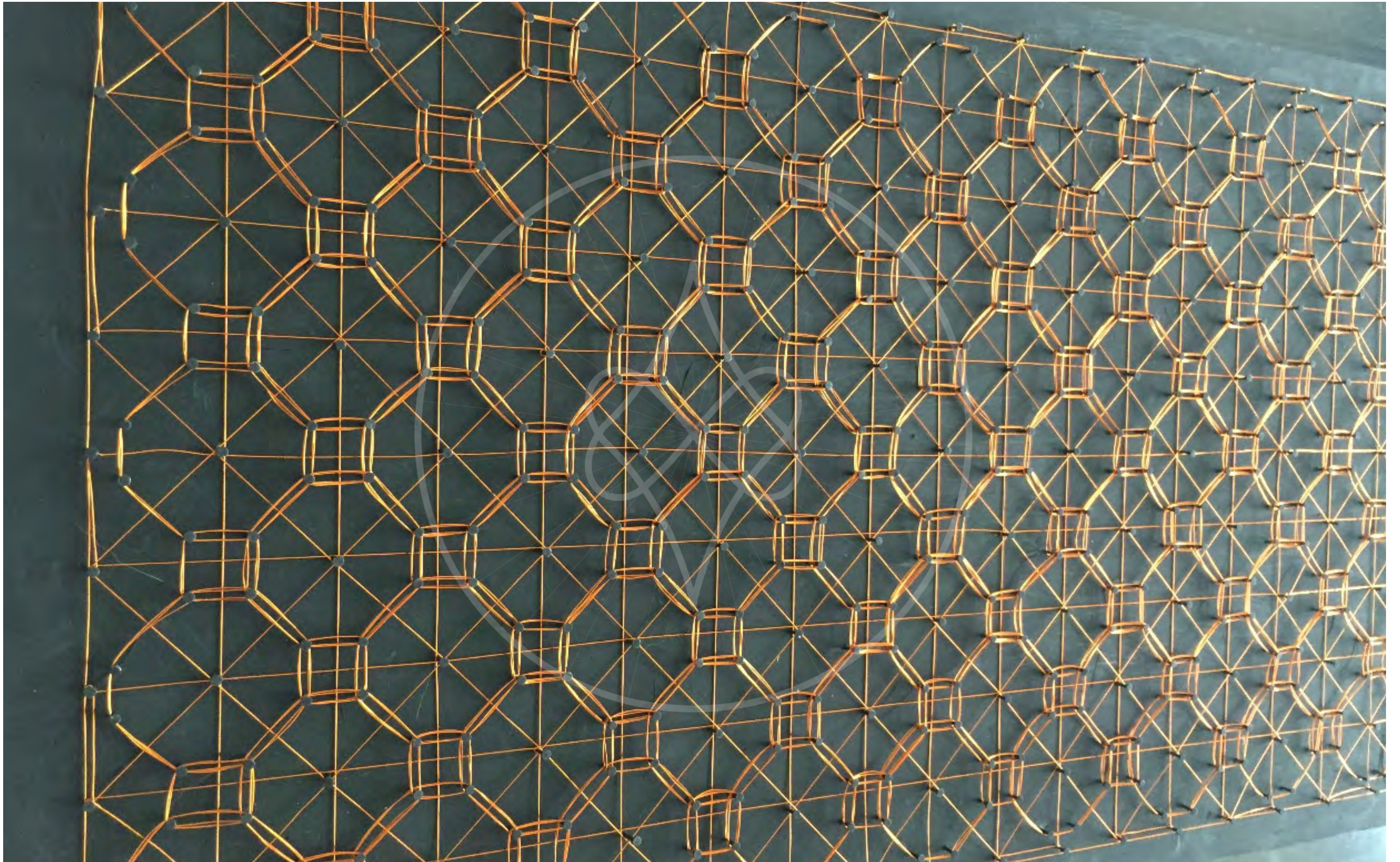
TRANSFORMATIVE ART

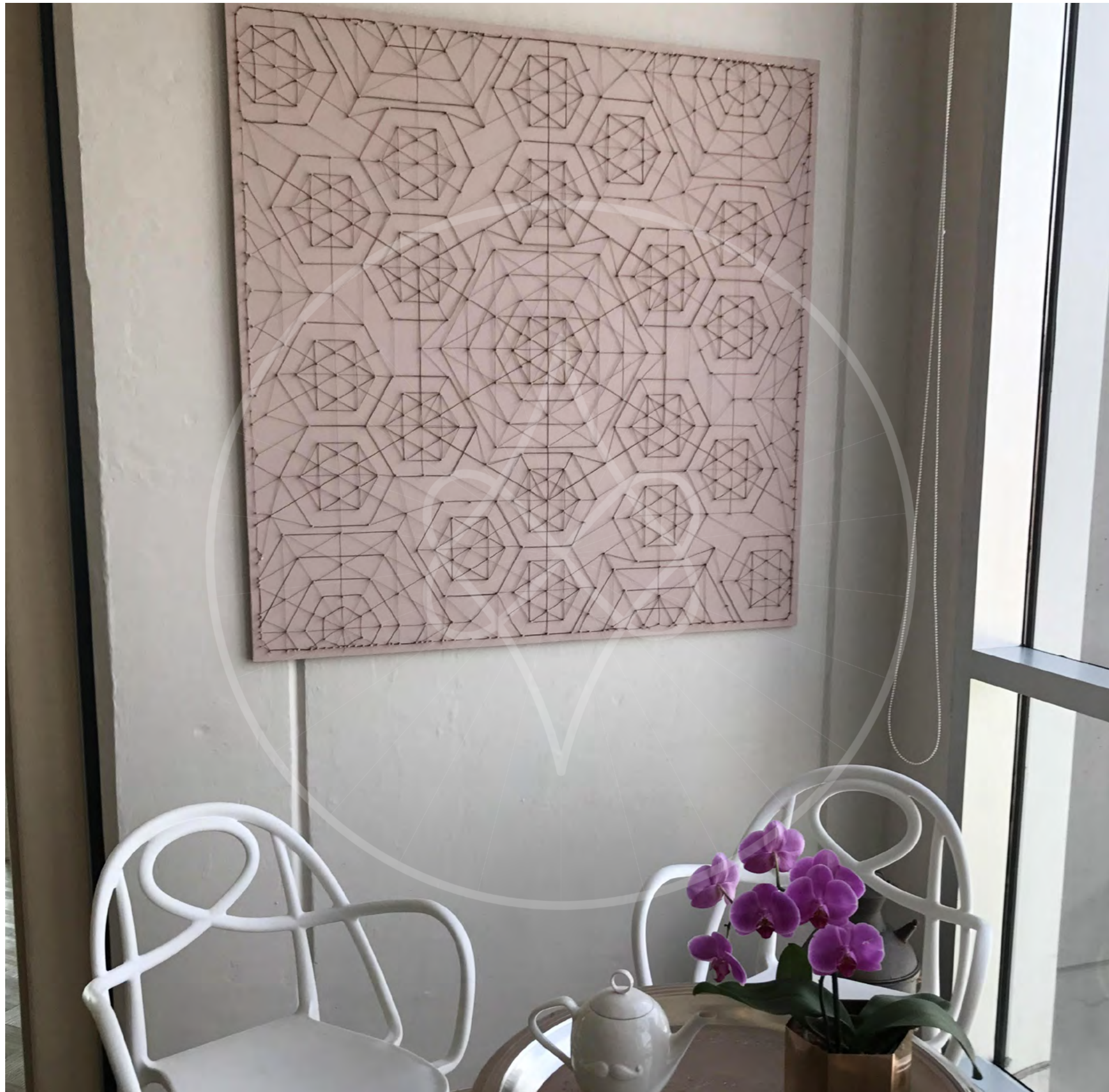




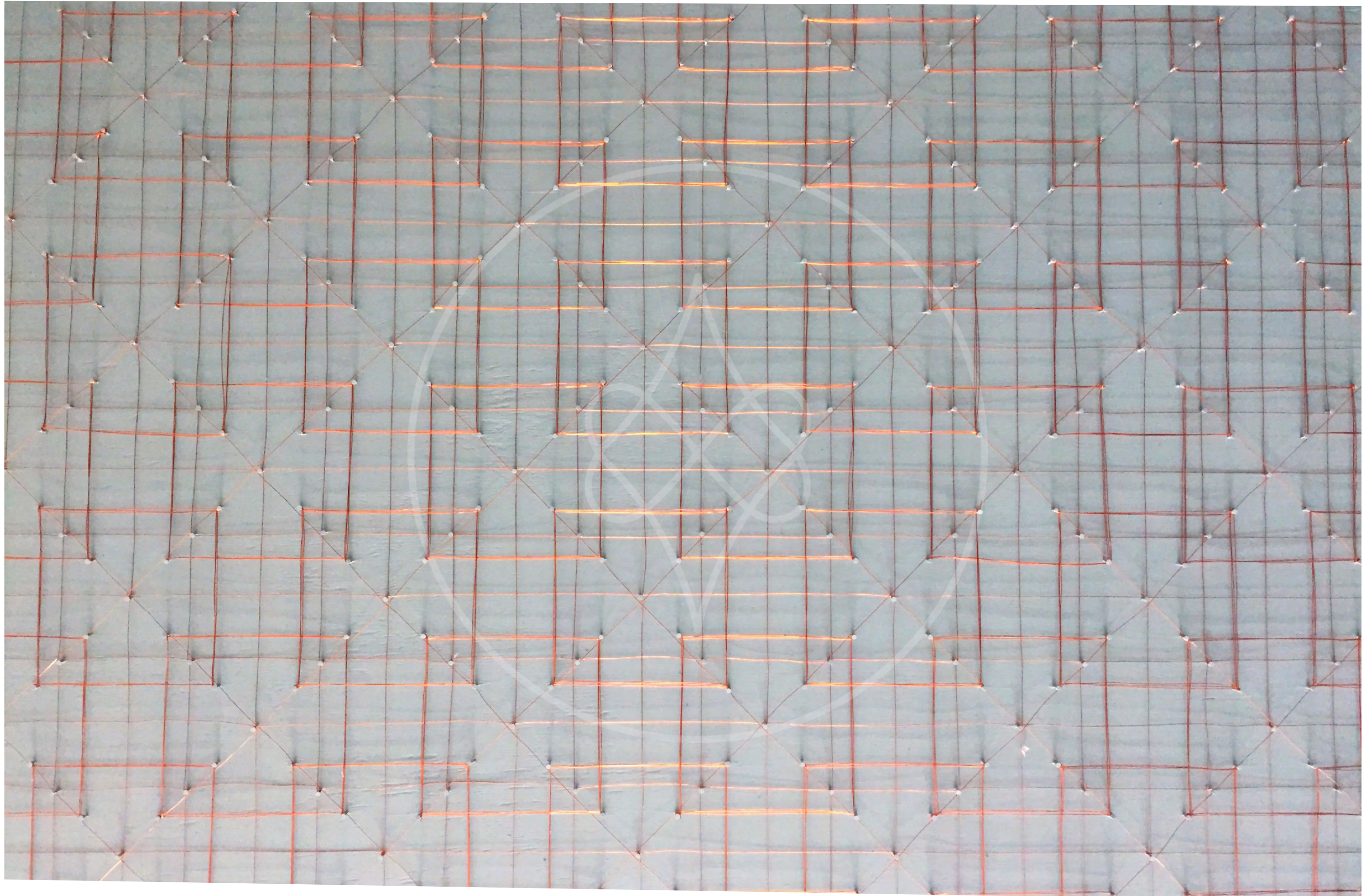






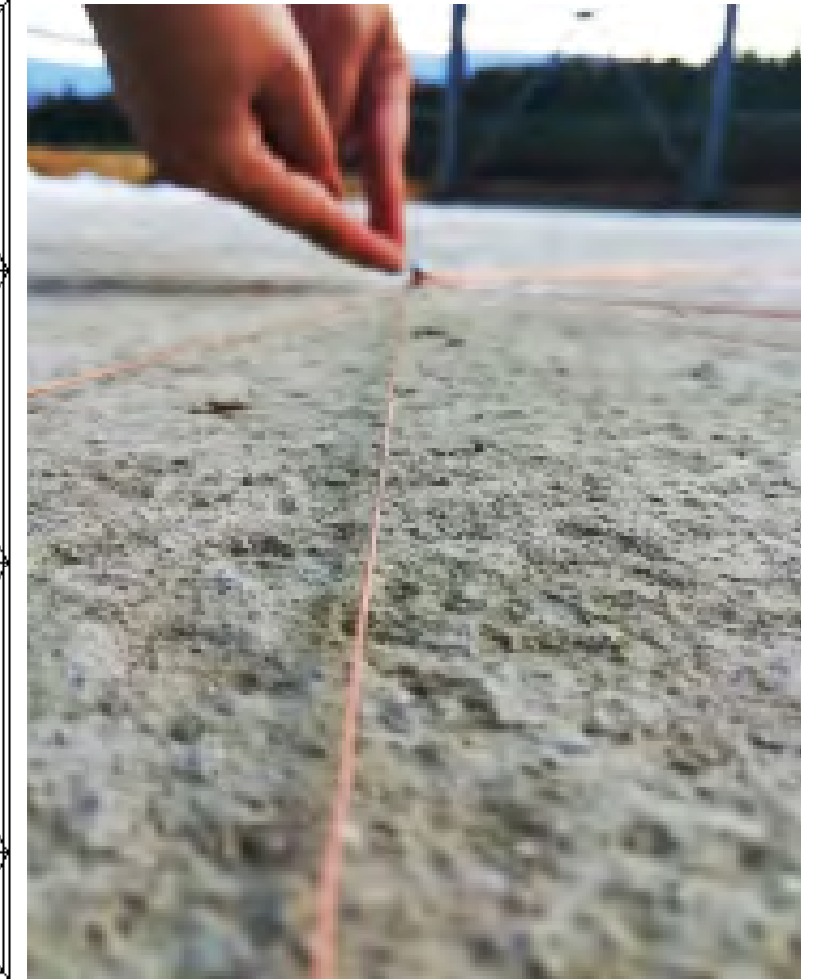
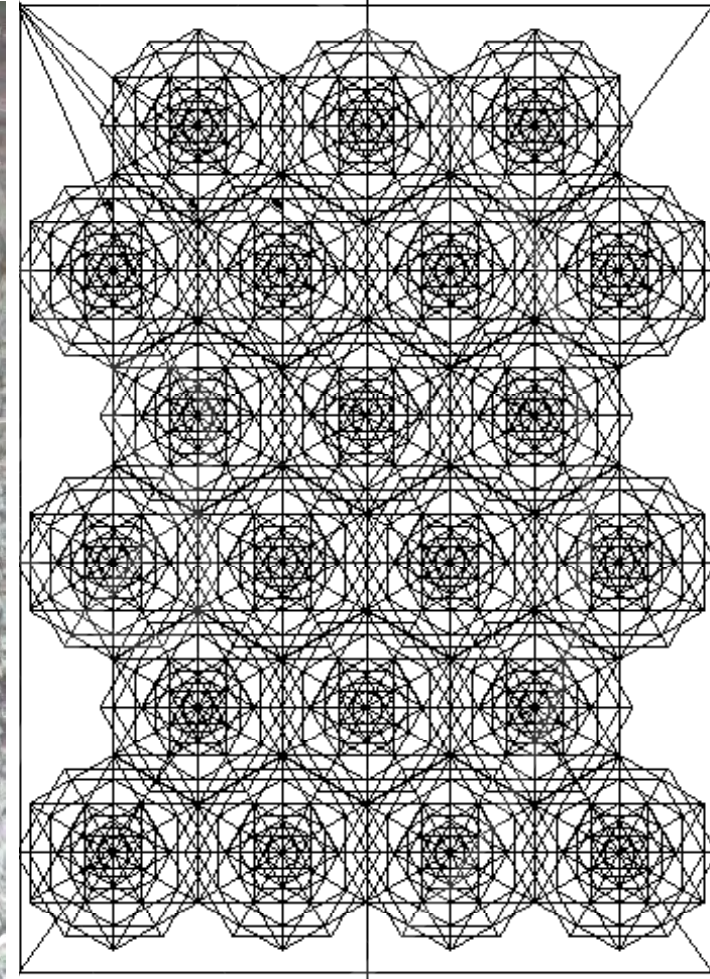








SPACE HARMONICS TECHNIQUES





RENDERING ANIMATION




THE POWER OF SACRED LOCATION

DISCOVER THE MYSTERIOUS LINKS BETWEEN EARTH'S FIELDS, ANCIENT TEMPLES AND HOW TO BOOST YOUR HEALTH

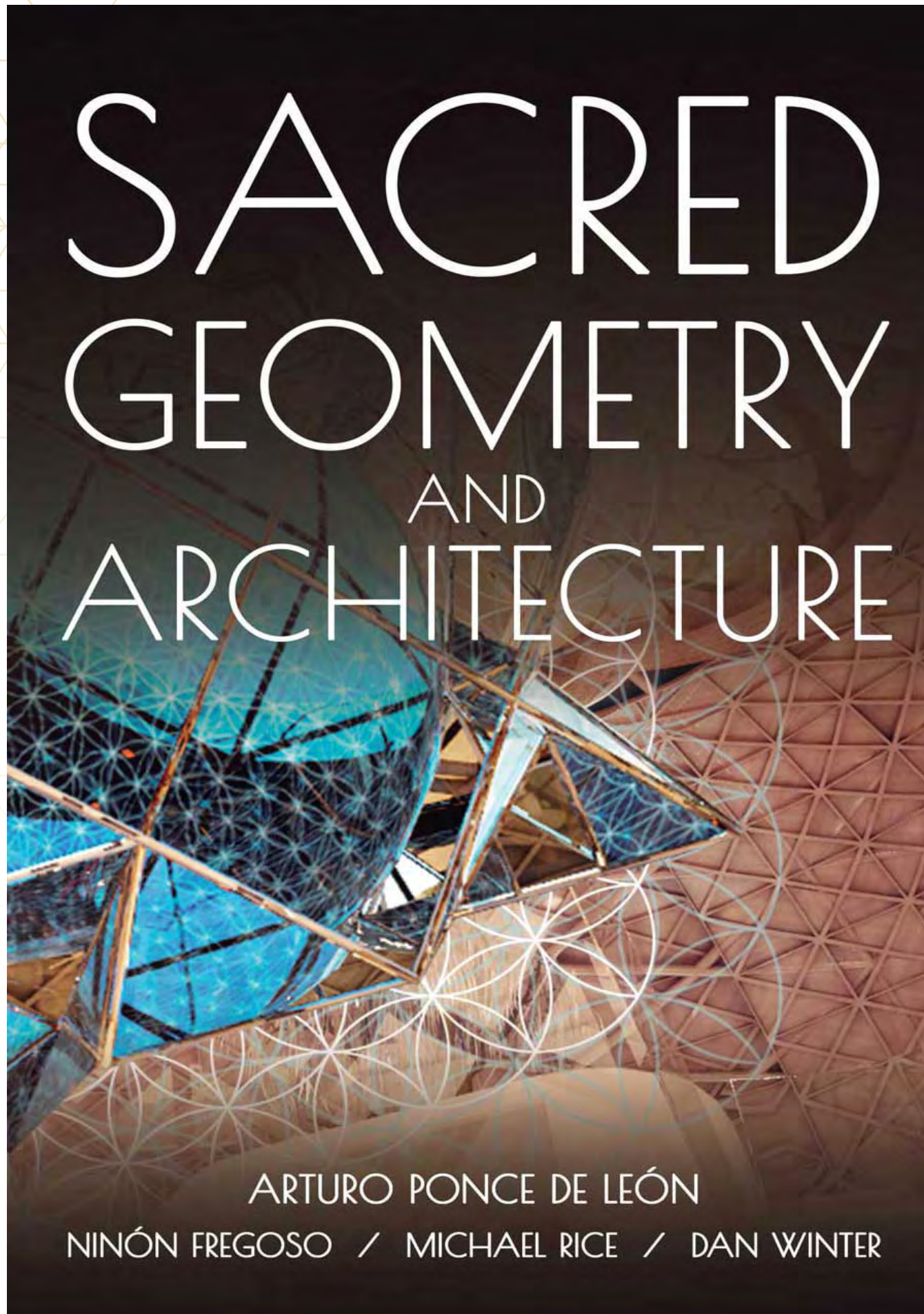


LYDIA GIAN. DE LEON, PH.D.
ARTURO PONCE DE LEON

Special foreword by Nassim Haramein of Resonance Institute, Professor of Geophysics Stavros Papamarinopoulos and Scientific Researcher Dan Winter



SACRED GEOMETRY AND ARCHITECTURE



ARTURO PONCE DE LEÓN

NINÓN FREGOSO / MICHAEL RICE / DAN WINTER



Geophilia

www.geophilia.org

© Copyright 2000-2023.
All rights reserved.