



Geophilia

CONSCIOUS ARCHITECTURE FOR THE 5 LEVELS OF BEING

Design Portfolio 2025

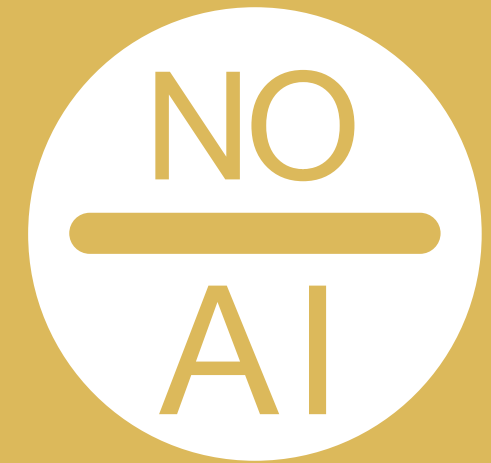
Sacred Geometry Projects

DESIGNED BY HUMANS NOT AI

AUTHENTIC HUMAN DESIGN

Explore the depth of Bio Architecture and Sacred Geometry through real, built projects. Every design presented here has been created by human intelligence, intuition, and experience – not by artificial intelligence. AI can only reproduce patterns already created by humans, rearranging existing ideas. Our work, by contrast, arises from attentive observation, direct study of nature, refined geometry, material knowledge, and lived architectural practice.

All of these projects are developed through the **Geophilia Design System**, which begins with a deep understanding of the client – their history, needs, symbols, life direction, and sensibilities – and integrates this with a precise analysis of the land. The orientation, topography, electromagnetic qualities, water flows, and environmental conditions are studied in detail. From this meeting of human intention and natural intelligence, the design emerges as a synthesis of the influence of the earth, the sky, and the person who will inhabit the space. The result is architecture that resonates, supports, and nourishes at every level.



These projects are made by us and our dedicated human team. No artificial shortcuts, no automated concepts. While AI can be useful for beginners or experimental sketching, we work with professional standards, licensed practice, and more than two decades of delivering buildable, real-world architectural environments. Homes, hotels, spas, retreat centers, cultural and hospitality spaces – all shaped with care, precision, and intention.

We love to serve. We listen deeply. A human-designed space connects to the heart because it is born from consciousness, presence, and relationship. This is architecture that remembers that we are alive.

GEOPHILIA

ARCHITECTURE

Geophilic conscious spaces are designed for wellbeing in the vital, physical, emotional, intellectual and spiritual level.

The goal of the Geophilia Design System is to bring in harmony the Client, the Land and the Building.

ACADEMY

Geophilia Academy is created to provide Holistic Knowledge Education through online course, live events and 1-1 mentorship.

Learn about the Science of Space Harmonics, geophilic design, The Sacred Science of Ancient Temples and Sacred Geometry.

INSTITUTE

Geophilia Institute is an entity created for the scientific research of Space Harmonics.

Its main objective is to link Architecture, Geophysics and Biomedicine, designing buildings according to the principles of Sacred Geometry, Bioclimatic Design and Natural Building Materials.

GeoΦhilia INSTITUTE

brings together over a century of collective knowledge and experience from its members' diverse backgrounds and research. Books, publications, and projects have been developed under this shared vision.

*The whole is
greater than the
sum of its parts*
- Aristotle





Lydia Isabel de León
Ph.D. in Geobiology
Architect
MSc in Sustainability - Greece

Lydia is a Greek architect and wellness coach who explores how buildings affect human health and well-being. With a Ph.D. in physiology focused on the effects of geophysical anomalies on biological systems, her research illuminates how subtle earth energies influence our bodies. For 15 years she has studied the locations of **ancient temples** and their energetic patterns, integrating the wisdom of ancient temple technology and sacred site alignment. She is the creator of the **Healing Architecture** methodology, author of the book “The Power of Sacred Location (2019)” and co-founder of the Geophilia Institute, weaving together science and spirituality in design.



Arturo Ponce de León
Architect
Engineer
Psychologist - Mexico

Arturo is a Mexican architect, engineer, and psychologist specializing in sacred geometry architecture. He has taught sacred geometry for 20 years and applies these universal patterns to buildings of every scale. He founded the companies Psicogeometría, Arqka, and the University of Sacred Geometry, and co-founded the Geophilia Institute. He is the author of three books “Psychogeometry: The Power of Life, 2004, “Sacred Geometry and Architecture” (2016)” and “The Power of Sacred Location (2019)” – and he serves as an international speaker at universities, conferences, and seminars worldwide on topics of sacred geometry, fractal design, and biophilic architecture.

MEMBERS



Nassim Hamein
Scientist
Resonance Institute - USA

Nassim is a researcher of the universal dynamics of matter and energy, which led him on a journey toward pioneering a new approach to quantum gravity and continual developments in unified field theory. **Nassim** dedicated most of his time to his independent investigation into physics, geometry, chemistry, biology, consciousness, archeology, and various world religions. Hamein's dedication to scientific exploration combined with his keen observation of the behavior of nature led him to a specific geometric pattern which is at the core of his approach and new perspective in unified field theory.



Aggelos Evangelou
MD
Professor of Medicine - Greece

Aggelos is a retired Professor of Physiology at the University of Ioannina in Greece. He conducted extensive research on electromagnetic fields, studying both their detrimental effects on health and their therapeutic potential for chronic illnesses. As scientific director on numerous national and international projects, he has authored over 110 papers in international journals (plus 360 conference publications), advancing the science of bioelectromagnetics and holistic healing in architecture.



Stavros Papamarinopoulos
Professor of Geophysics - Greece

Stavros is a Professor of Geophysics at the University of Patras, Greece, with postdoctoral research at Cardiff, Newcastle, and Oxford. He holds a Ph.D. in Geophysics from the University of Edinburgh and a B.A. in Physics from the University of Athens. Stavros has led over 250 geophysical surveys across Europe, Africa, and Asia to locate ancient buried cities and archaeological sites. He has published more than a hundred scientific articles with numerous citations, bridging earth science and the mysteries of sacred landscapes.



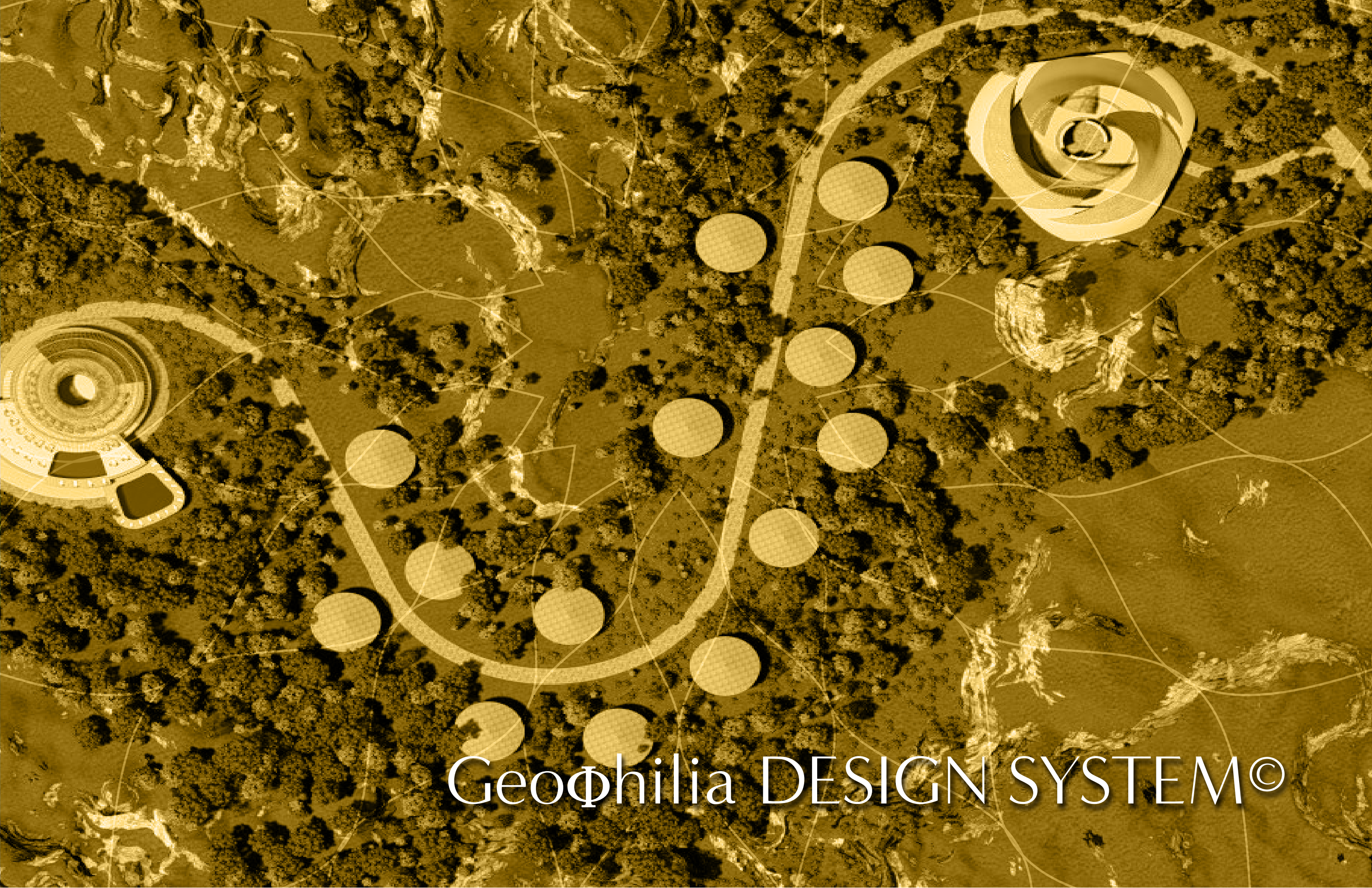
Dan Winter
Scientist
Inventor - USA

Dan is an American electrical engineer, inventor, and consciousness researcher. Graduating with honors, he explored psychophysiology and the origins of language before working as a systems analyst. His career spans studies in quantum physics, fractal mathematics, and biofeedback. Dan studied at the Gurdjieff School of Sacred Gymnastics, apprenticed with Buckminster Fuller, and visited sacred sites around the world – from the Giza pyramids to the Andes and Findhorn – seeking the geometric principles of consciousness and **space harmonics**. He has contributed key insights on brainwave fractality and coherent biofields.



Elvira Riego
Social Worker
Geometrician - Argentina

Elvira is an Argentinian geometrician specializing in sacred geometry and energetic design. For over 15 years she has investigated the “divine human design” and energy systems through geometric principles. Trained in Chinese medicine, Shiatsu, yoga, Tai Chi, and Qigong, she brings a holistic perspective to her work. Elvira authored “Descorriendo los Velos” (2006) and “El Camino de la Rosa” (2012), and as an artist, she has transformed crop-circle patterns into healing art installations.



Geophilia DESIGN SYSTEM©

1 CLIENT ANALYSIS & RESEARCH OF THE PROJECT

We begin by deeply understanding the people, purpose, and vision behind each project. This includes psychological profiling and consultation, ensuring every design choice resonates with the client's values.

2 DIAGNOSIS OF THE LAND

Next, we analyze the land and site conditions in depth. Using geobiology and geophysical tools, we map earth radiation lines, EMF hotspots, and the most auspicious zones for development.

3 PRELIMINARY ARCHITECTURAL DESIGN

This holistic design integrates **sacred geometry**, biogeometry, auspicious layouts, bioclimatic passive design, permaculture, and biomimicry. We select ecological, sustainable materials and cutting-edge technologies to improve **space harmonics** and indoor-outdoor coherence. By weaving biophilic design into geometric patterns, the design fosters the health and prosperity.

4 EXECUTIVE PROJECT

We then develop the detailed architectural plans for construction execution. This includes finalizing all dimensions, structural elements, and technical specifications, ensuring the harmony of the design is preserved in every detail.

5 CONSTRUCTION PHASE

During construction we integrate special **fractal materials** and sacred geometry design woven under the finished floor as well as transformative artworks to further enhance the building's energetic coherence. We can add fractal additives to paints or concrete and install custom art at key points, amplifying the space harmonics of the completed structure.

THE FIVE STAGES

of the **Geophilia DESIGN SYSTEM**©

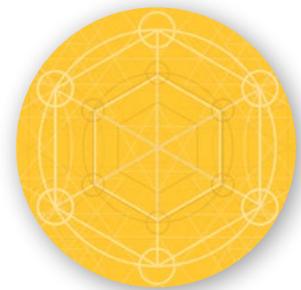
PILLARS OF GEOPHILIC DESIGN



Sacred Geometry
+ Fractal Design



Bioclimatic Design
+ Sustainability



Integration of
Client Analysis



Permaculture
+ Biomimicry



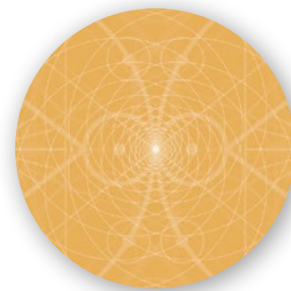
Auspicious
Layouts



Conscious
Community Design



Radiation
+ Remediation



Transformative art
+ Space Harmonics

1 Consulting on land selection/ existing building selection:
Evaluating sites or existing structures to find the most energetically coherent options.

2 Client analysis through various techniques:
Understanding occupants' needs and energetic profiles through interviews and meditations to inform design.

3 Earth radiation analysis & optimum location choice:
Mapping earth energies to choose building locations aligned with the land's subtle forces.

4 Redesign of existing building spaces:
Retrofitting buildings using Geophilic principles to improve their vibrational harmony and healthfulness.

5 Holistic Masterplanning:
Integrating land, water, energy, and community needs into a unified sustainable design

6 Architectural Design:
Crafting new buildings that embody sacred geometry and **space harmonics**, tuned to their environment.

7 Custom Transformative Art:
Creating fractal art, sound installations, and symbolic geometry to transform and uplift energy.

8 Mission Activation:
Embedding symbolic and functional elements that activate the purpose of the space (education, healing, spirituality, etc.).

9 Harmonic Technology:
Advising on EMF remediation, fractal antennas, harmonic materials, and other innovations that enhance energetic health.

10 Photorealistic Rendering:
Visualizing the final design with high-quality images that capture its spiritual and aesthetic essence.

SERVICES

of the Geoφhilia DESIGN SYSTEM©



THE SCIENCE OF SPACE HARMONICS

WHAT WE STAND FOR

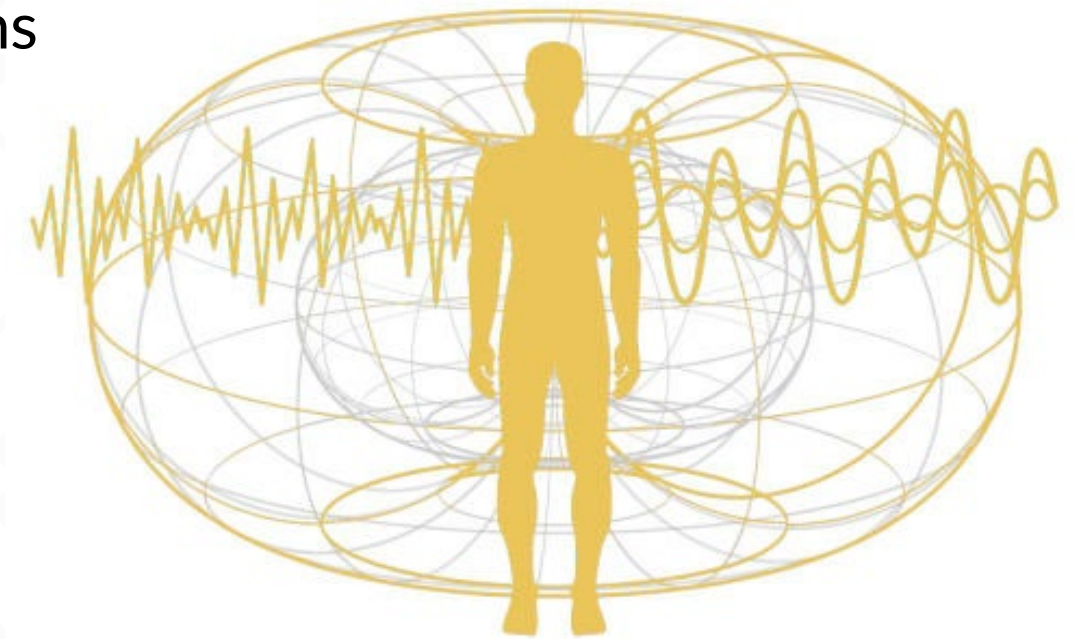
geo philia

earth, gea, gaia

love, friendship and harmonic relations

Geophilia is the science of improving the coherence of your internal and external space.

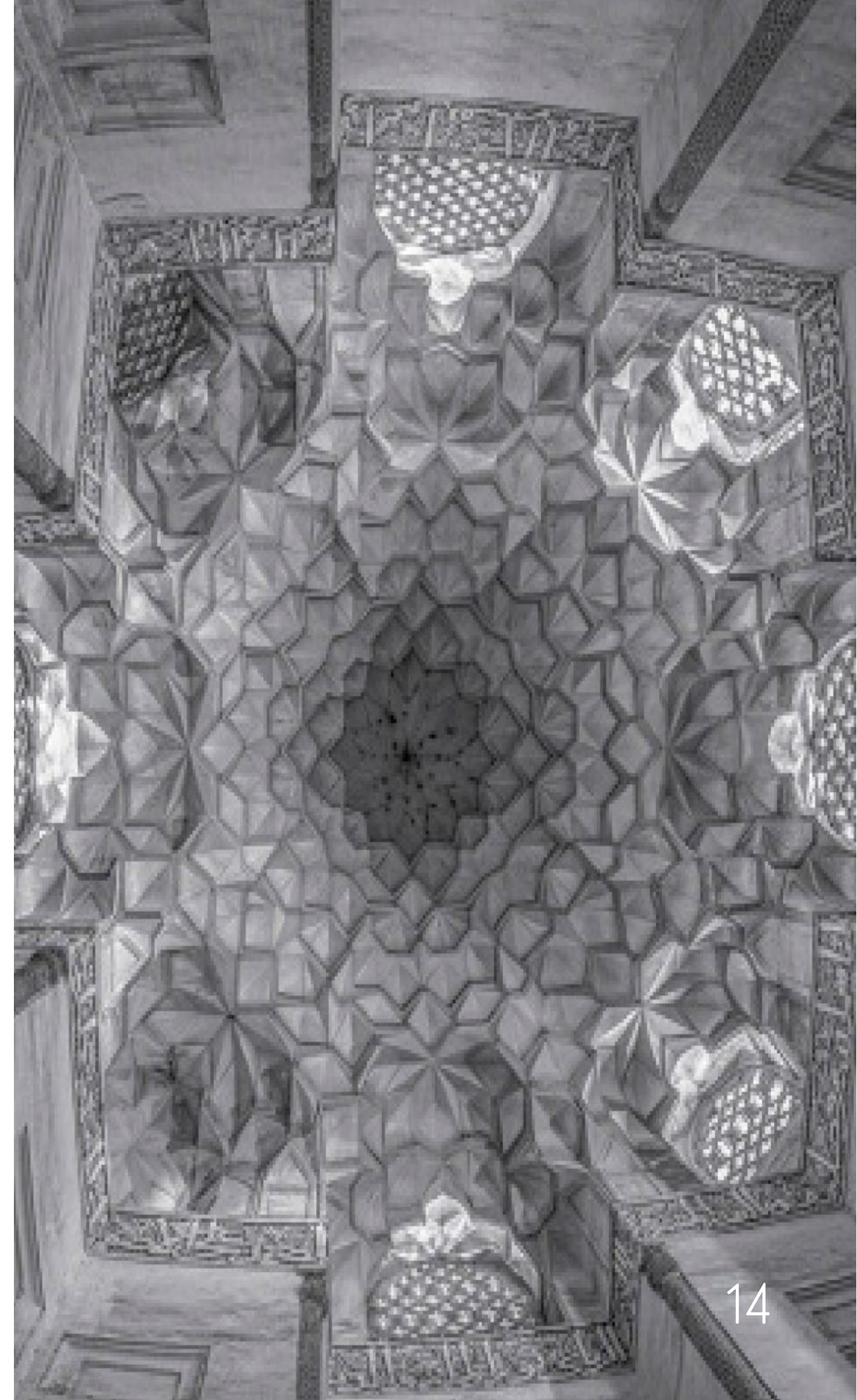
Yes, both the psychological and the physical space, the subjective space that inhabits us and the objective space that surround us.



For **25 years** we have been researching the deep truth of what makes us happy, healthy and wealthy. We found some answers in the scientific world and others in eastern philosophical practices.

Luckily, we are now living in an era of massive amount of information and that help us discover what is the missing link between our internal space (from our skin and inside) and our external space (beyond our skin):

*“**Fractal Space** is the missing link of your internal and your external world. And that is so important and crucial to realize because our health depends on the way we embed or not the inside and the outside.”*

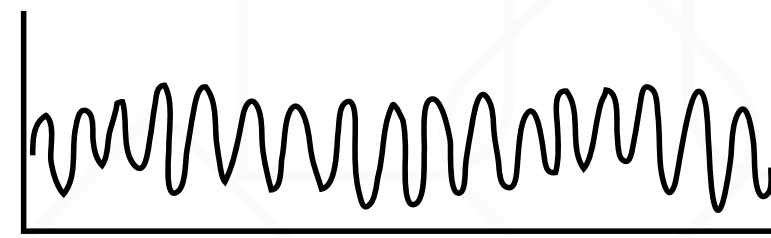


GEOPHILIA CONSTRUCTION

Technically speaking it is called “harmonic wave interference”, in layman’s term a harmonic space.



Normal Construction



Geophilia Construction





FEATURED PROJECTS



— AIKI
○ HEALING CENTER

MEXICO / Land: 5,000m² / Design: 1,700m²



Aiki Healing Center

A holistic health center owned by Japanese proprietors, designed as a toroid using sacred geometry principles.

The space features therapeutic areas, communal gathering spots like a restaurant, kitchen, and auditorium, massage chambers, a reception, and a dedicated meditation room, all infused with Japanese design aesthetics.

What makes Aiki Centre special, among many choices in the design, is its location: after a detailed land analysis, it was placed on the most coherent point of the electromagnetic field. Before the actual construction began, an opening ceremony was held exactly in that location, that included offerings to the land, sacred fire and special activation.

This place is exactly the energetic center of the whole land. In addition, the landscaping, the gardening, was designed as a Zen garden, in different heights and different terraces to generate a space of harmonic energy.





The idea was to add a waterfall, and flowing water in the form of a circuit. The water is circulating around the building, creating a protection as well as adding more subtle energy to the space.





20
KEMEIX
HOTEL CHAKRA HEALING

TULUM, MEXICO / Land: 10,000m² / Design: 2,933m²



Keme Ix Chakra Healing Hotel

A project developed based on the principles of Fractal Geometry and bioarchitecture. It's located in the Riviera Maya area, near the city of Chemuyil, between Tulum and Playa del Carmen, Mexico.

The conceptual and material geometry linking the entire development is the torus.

The torus, like a donut, generates implosion and explosion movements that allow life.

The hotel and reception were explicitly designed as a torus. Abstractions of this geometry elegantly and naturally form to enter the entire complex. The torus, with its undulating and organic forms, allows us to understand the primordial nature of the universe. As unified physics has shown, the link between the infinitely small and the infinitely large is a geometric matrix of fractal toroids that amplify and reduce based on the most important constant of the universe: the golden ratio or phi number: 1.618033.





Based on a detailed analysis of the owners, the geometries to be used in the project were determined. Through cymatics, which transforms sound impulses into geometry; the study of the five elements from Eastern traditions; and other archaeo-astronomy studies, ideal dimensions and proportions were proposed in the design.



3
O

PENTAGON COMMUNITY

MEXICO / Land: 10,000m² / Design: 2,000m²



Pentagon Community

An amazing complex of three residencies designed based on the geometry of the pentaflower, consisting of five double golden mean spirals. Its center encompasses a firepit, activated as the social heart of the space. It is the most implosive and high harmonic location of the plot, which was discovered after the Land Analysis -the second stage in the Geophilia Design System.

The pentagram, or five-pointed star has embedded in its design the golden ratio (ϕ). The pentagon, as a hermetic symbol, is used by many esoteric schools such as the Pythagorean school or Freemasonry. It is a pattern that can share and distribute energy/matter. The pentagram is associated with femininity, just as the cube is associated with masculinity. Moving beyond a dualistic conception of the universe where opposites are irreconcilable, a pentagram, when seen in two dimensions, will always contain another pentagram pointing in the opposite direction, and is a shape that creates fractality.





The houses are designed in a way to maximize the beautiful view to the mountains as well as the best solar orientation. There is also an area that serves for yoga, meditation and healing and is surrounded by a pond that collects rainwater.



4 O HIPPOCRATES COMMUNITY

COSTA RICA / Land: 13,000m² / Design: 400m²





Hippocrates Community

This private villa, part of the it was designed using Triskelion geometry – a symbol representing the unity of three cosmic forces. It embodies the triad found across various traditions: Pitta, Vata, Kapha in Ayurveda; Fakir, Monk, Yogi in Gurdjieff's Fourth Way; and Isis, Osiris, Horus in Egyptian mythology – reflecting the harmony of universal balance.

The main entrance is based on the Vesica Pisces and on the torus through a double façade, which gives continuity and harmony to the whole structure. It also serves as a protective geometry for the heavy rain. The vesica pisces (Sacred Geometry pattern based on the flower

of life) welcomes you to this triskelion house! Conscious Architecture is one part of the equation for Life Harmonics, which works with our external space. The other part is the internal space in the five Levels of our being. Brining both together is a recipe for designing the best life ever!



With an earth diagnosis analysis, we can be aware of the most coherent and disharmonic areas, and locate special structures to activate them and/or harmonize them.





VIPASANA COMMUNITY

MEXICO / Land: 5,000m² / Design 2,600m²



Vispana Community

In the Vipasana healing space and Retreat Center, the aim was to create more introvert spaces for people's accommodation, explicit Sacred Geometry, natural materials and EMF remediation through cutting edge technologies. The complex includes little casitas, temazcal and common space for mediations and healing modalities.

The heart of the whole project was activated through the placement of a special tree, and a unique Sacred Geometry platform as well as fractal materials.





06

ARIES VILLA

MEXICO CITY / Land: 1,000m² / Design: 880m²



Aries Exclusive Villa

A three-story urban sanctuary that fuses sleek modernism with timeless harmony. Its façade is composed of interlocking golden rectangles, each window and panel aligned to the golden ratio, giving the structure an uplifting, balanced rhythm. Sunlight streams through tall windows into open, fluid spaces that flow seamlessly across levels. Every wall, staircase, and transition follows a gentle geometric grid, creating movement that feels effortless and naturally aligned with spatial order.

Inside, the minimalist design radiates warmth and clarity. Concrete and steel meet soft wood floors and textured stone, balancing strength with serenity. The golden-ratio lattice on the exterior glimmers in the sunlight, casting geometric shadows that animate the space throughout the day. At the rear, a private Zen garden with bamboo, river stones, and a tranquil reflecting pool provides a meditative refuge amid the city's pace. Subtle spiritual details enrich the home's atmosphere: a vertical atrium and sculptural staircase form the energetic "heart," while carefully placed quartz crystals and a gentle water feature nurture calm, grounding energy throughout the interior.



Aries Villa exemplifies the essence of spiritual modernism—where geometry, light, and mindful design converge to create harmony. Every proportion and texture contributes to a quiet sense of order and well-being. Even in the midst of Mexico City’s bustle, the home stands as a living example of sacred geometry in architecture, transforming urban space into a peaceful retreat. Here, beauty and balance coexist, offering both shelter and spiritual alignment in the heart of the modern world.



07 OASIS HOTEL

ARGENTINA / Land: 20,000m² / Design: 1,300m²



Oasis Hotel

Hotel Oasis in Argentina is designed as a paradise in between an amazing field of grapes and fruit trees, 2 hours from Buenos Aires. It was conceived as the geometry of the vector equilibrium to give stability to the masterplan and each of the 6 villas were designed like a 3 folded petal abstraction from the flower of life pattern to create bliss and serenity.



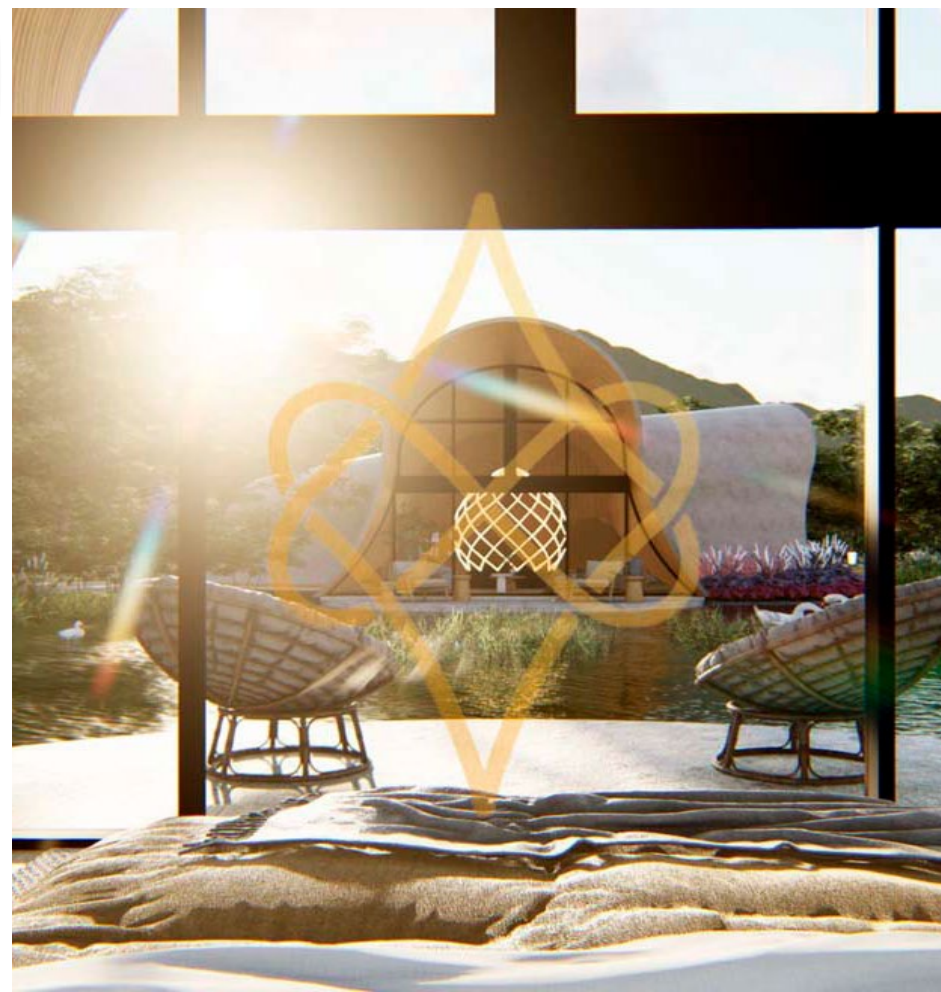
Built with a mix of natural fibers, ferrocement and fractal dash (you can find it in our shop) they create natural smooth curves that allow time for contemplation through the golden spiral window openings to the lake.

The water reservoir in the form of a lake has 3 main functions: it acts as a contemplative meditative space, with an island power spot in the center featuring a gigantic monolithic rock; it helps regulate the local micro-climate fluctuations and it aids in increasing biodiversity.





Creating and activating the Heart of the Space[®] allows the electromagnetic field that tends to chaos and disharmony, to have a reference point and establish an axis of gravity to promote implosion. By generating a toroid, the movement of implosion generates greater harmonic inclusiveness of waves and this is reflected in greater health, greater mental clarity and harmonic lucidity.





YANAY HOTEL

TEPOZTLAN, MEXICO / Land: 18,000m² / Design: 5,000m²



Yanay Hotel

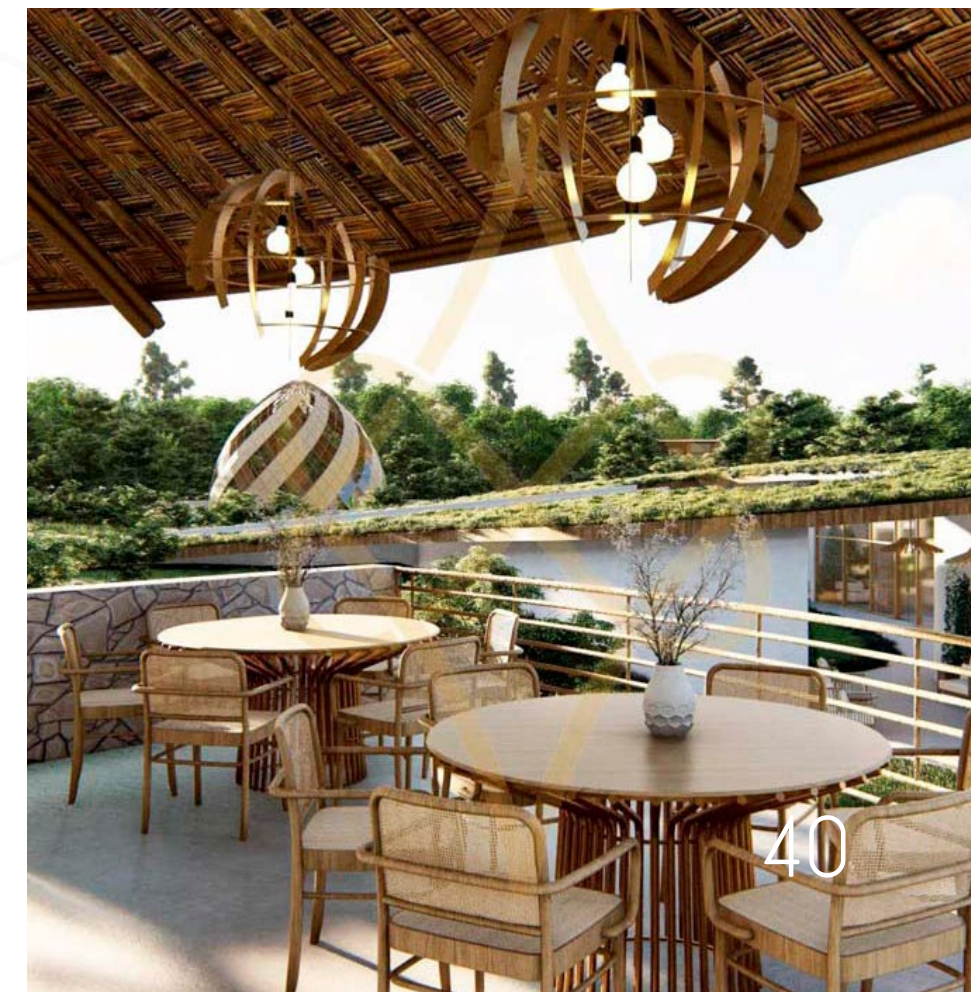
Hotel Yanay is designed with a special holistic approach, taking into consideration the surrounding landscape with gorgeous mountains around. The core geometrical pattern is made of golden mean spirals and rectangles, which give birth to an extensive architectural program: reception, , restaurant for more than 100 people, 8 villas that can host up to 50 people, a zome as well as a spa healing center that beautifully adapts to the terrain giving a sense of embrace of energy and protective feeling.

Hotel Yanay is embedded in the majestic mountains of the Tepozteco, Mexico. It is a place surrounded by a sort of deep magic and mysterious energy. We designed this hotel with the clear vision of harmonizing with nature, merging the beauty and benefits of biophilic designs.





The heart of the place was located in the center, and it includes a spa and swimming pool - all the other elements were placed around it. There is also a meditation center as a zome, a bamboo restaurant that acts as a farm-to-table culinary experience, and 8 villas with various rooms which open to the Sun and the majestic view of the valley. The reception with its double ceiling evokes the light energy of our spirit to encounter new experiences in powerful and natural spaces.





RISE HOTEL & LUXURY SPA

COSTA RICA / Land: 130,000m² / 17,000 sqm

Rise Hotel Luxury Spa

Rise Hotel and Luxury Spa. We had to expand and rewire our brains to think out of the box and create a special torus geometry that connects with the mountains that surrounding this extraordinary location. The Torus shape, like a donut, is a fundamental geometry of the universe, found in all levels, as proven by Nassim Hamein and Unified Physics. Human consciousness can be transformed visiting and experiencing these spaces.



It is intricately designed based on the golden ratio of a sphere. Featuring expansive overhangs strategically crafted to shield against heavy rainfall during numerous months, the structure seamlessly integrates with the landscape, which boasts a substantial slope angle. The foundation of this remarkable development is constructed using a blend of stone and reinforced concrete, enriched with special additives to enhance its paramagnetic properties.



The walls and ceilings showcase a harmonious combination of bamboo and earth-plastered surfaces. This ambitious project is thoughtfully designed, prominently featuring a spa and a dedicated healing area among its key structures. Through the Geophilia Design System, we always aim to bring the people, the land and the building in harmony.



EARTH ANGEL COMMUNITY - CRYPTO HEMPCRETE

MEXICO / Land: 27,000m² / Design: 12,000m²

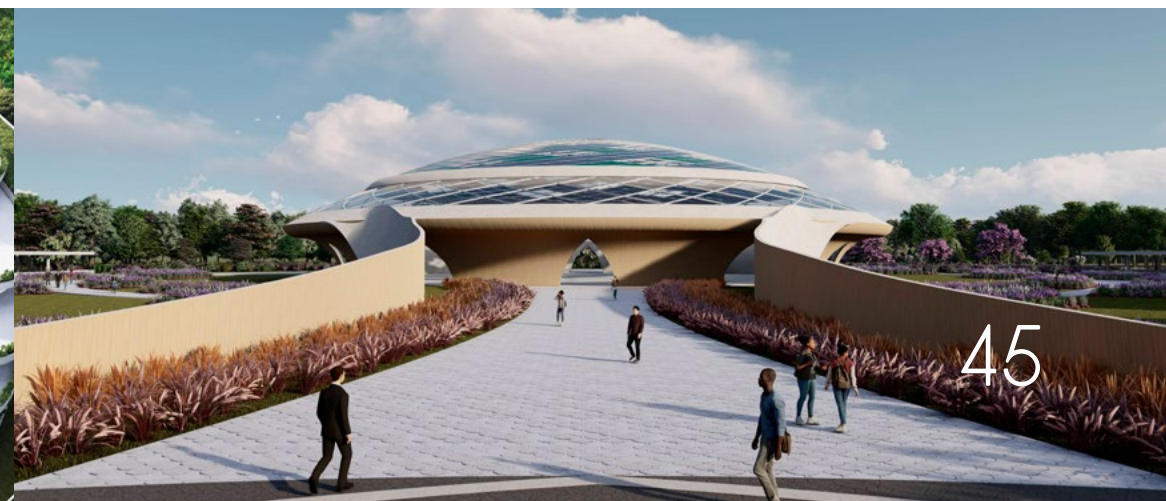


Earth Angel

Earth Angel is a decentralized, hemp-based community to heal the earth. We worked in depth to create a holistic masterplan through the Geophilia Design System, integrating Sacred Geometry, Auspicious Layouts, Bioclimatic Design, Permaculture and so much more!

The bio fractal design of the universe is not restricted to a range, the Universe is alive in varying degrees of magnitude - and the scientific community of Unified Physics explains it mathematically. Earth Angel has a design that allows for coherence with all the other levels, called fractality. Creating coherent architectural spaces allows us to embed our electromagnetic and gravitational torus of our physical body and the planet Earth within the Solar System.

This Organic Sanctuary pilot project features boutique hotels, an international traveler spa, conference center, medical center, living space, startup incubator, venture capital co-operative. Earth Angel brings together the best eco-solutions from around the world while utilizing skills and enriching local natural resources.



Unified Physics is the scientific basis for understanding why it is so important to design in accordance with the microcosm and macrocosm in both mathematical proportions and geometric designs. As human beings we live in the mesocosm, our architectural biological level of

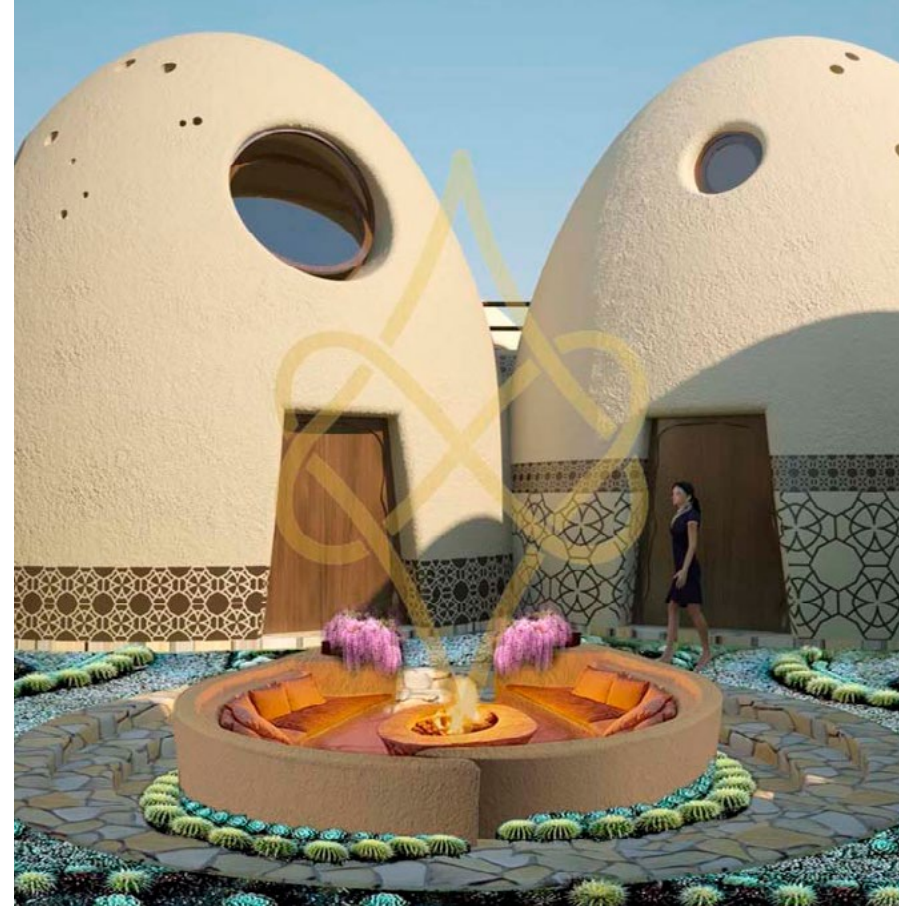
our existence. Unified Physics shows us a continuity across the different scales: the very very small level, the microcosm, communicates to the very very big scale, the macrocosm, through the use of phi ratio, golden mean - 1.618033... - times the Planck length.





— AMMA CENTER
— HEALING CENTER & HOTEL

MEXICO / Land: 15,000m² / Design: 3,400m²



Its design combines the ancient science of Sacred Geometry with an innovative construction proposal. It consists of 22 rooms spread over four hectares in the state of Morelos, Mexico, and was designed based on the Sacred Geometry of the pineal gland, the torus and the specific geometry of the 22 chakras.

The pine cone holds a geometry that arises from multiple counter-rotating spirals following the Fibonacci spiral pattern. We can observe from a top perspective that there are 13 spirals rotating to the right and 8 spirals rotating to the left. This counter-rotating movement generates an implosive effect on the electromagnetic field and induces the emergence of gravitational forces.

Amma Center

Amma Centre is a healing retreat center and spiritual community including an Eco Boutique Hotel. It is constructed with natural materials aimed at regenerating the fractal energy field of both the land and the occupants. It is built with super-adobe domes and enriched fibers.



For its realization, several analyses were conducted in various areas: weather analysis, bioclimatic design, land analysis, Sacred Geometry integration, holistic masterplan and permaculture, among a few of them.





12 SEVEN STARS
VILLA

OAXACA / Land: 600 m² / Architectural Design: 350 m²

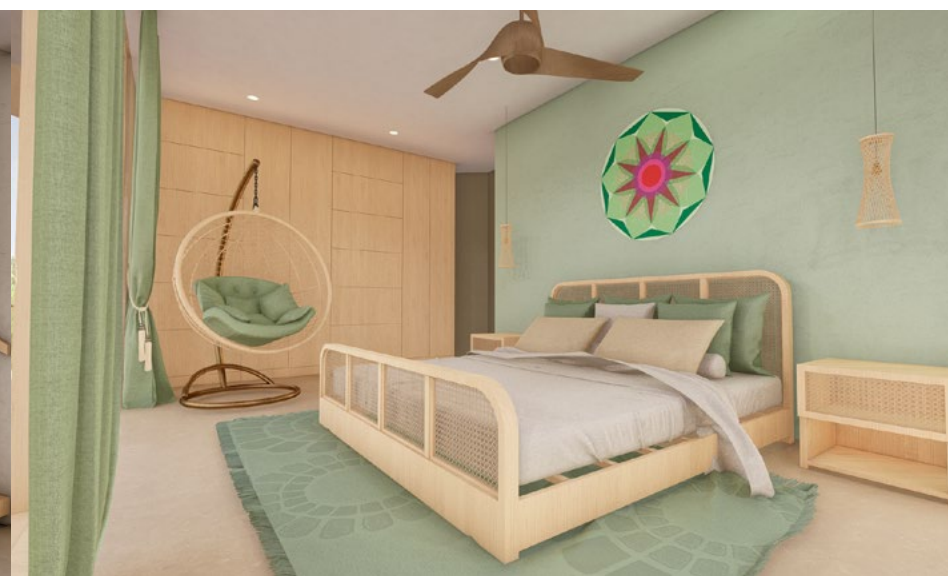


Seven Star House

This built project is a coastal retreat situated on a steep hillside overlooking the Pacific in Mazunte, Oaxaca. The project is derived entirely from the geometry of the pentagon and the harmonic proportions of the Golden Ratio. This sacred geometric foundation guides both the spatial organization and the structural rhythm, allowing the architecture to resonate with the natural environment and support a sense of calm, coherence and embodied presence.

The project consists of two houses connected through a shared social terrace that establishes the gravitational heart of the site. The main residence unfolds over two levels and culminates in a panoramic rooftop terrace designed for contemplation, gathering, movement practice and stargazing. The secondary house serves as a guest residence or retreat suite, maintaining privacy while remaining visually and energetically integrated with the whole.

At the center of the composition lies a circular pool and communal terrace. This space functions as the Heart of the Space®, the point where landscape, architecture and human activity converge. It creates a subtle but perceptible sense of alignment and orientation, encouraging the body and mind to settle into a state of natural ease.



The design applies Geophilia principles to harmonize the built environment with the site. The placement of structures, the activation of the heart center, and the use of natural and paramagnetic materials work together to support healthy energetic conditions. The pentagonal geometry, in combination with bioclimatic orientation and natural ventilation, fosters thermal comfort and a distinct sense of grounding.

It is conceived as a vessel that mediates between land, body and cosmos. The architecture does not impose upon the hillside but is shaped by it, forming a continuous dialogue with the terrain, vegetation and ocean beyond. The result is a living environment where geometry, materiality and landscape are brought into coherence, creating a place that invites rest, clarity and connection.



3
—

VIBE ABU DHABI

HEALING OASIS

ABU DHABI / Design: 340m²

Vibe Abu Dhabi Healing Oasis

VIBE Hub is conceived as a contemporary healing oasis within the vibrant urban environment of Abu Dhabi. Positioned in a luxury commercial plaza overlooking the sea, the project creates a sanctuary where the body, mind and senses can return to coherence. The design responds to the need for refuge from the angular geometries, synthetic interiors and artificial environments that characterize the modern city. It invites visitors into a space shaped by fluidity, softness and harmonious proportion.



The architectural language is guided by explicit Sacred Geometry and traditional Arab patterning. Curved translucent walls encircle the space, generating a sense of continuous flow and protection. These forms create a gentle contrast to the rectilinear surroundings of the building and offer an immediate shift in perceptual experience. The geometry of the entrance and interior screens is derived from classical Islamic star tessellations, reinterpreted through a contemporary material palette of soft golds, whites and luminous surfaces.

Water forms the conceptual and energetic heart of the design. Blue mosaic flooring in flowing patterns recalls the presence of desert springs and creates a sensory grounding effect underfoot. The central hall features a large crystal set within a mandala-like radiating pattern, activating the Heart of the Space[®] and establishing a stable harmonic field. This central point serves as an orienting force for meditation, movement, breathwork and restorative practices.



The ceiling features a refined geometric rosette that diffuses light in a soft, atmospheric manner. The combination of natural interior planting, filtered daylight and rounded spatial enclosures contributes to an environment supportive of relaxation, mental clarity and emotional restoration. The material selection emphasizes organic tactility and biophilic presence, maintaining visual stillness and acoustic calm.

VIBE Hub is designed to counterbalance the dominant fire element of the metropolitan skyline with the restorative properties of the water element. In this way, the space becomes a psychological and physiological refuge,

offering users an opportunity to experience ease, presence and renewal. The project demonstrates how geometry, light, pattern and materiality can be orchestrated to restore coherence and vitality within contemporary urban life.

Through the integration of sacred geometry, biophilic forms and atmospheric spatial composition, VIBE Hub establishes a place of refuge and inner alignment within the commercial heart of the city. It is an invitation to return to center, to breathe, and to reconnect with the harmony that underlies all natural form.



14 EL PEÑÓN RANCH

VALLE DE BRAVO / Land: 11,000m² / Design: 1,300m²



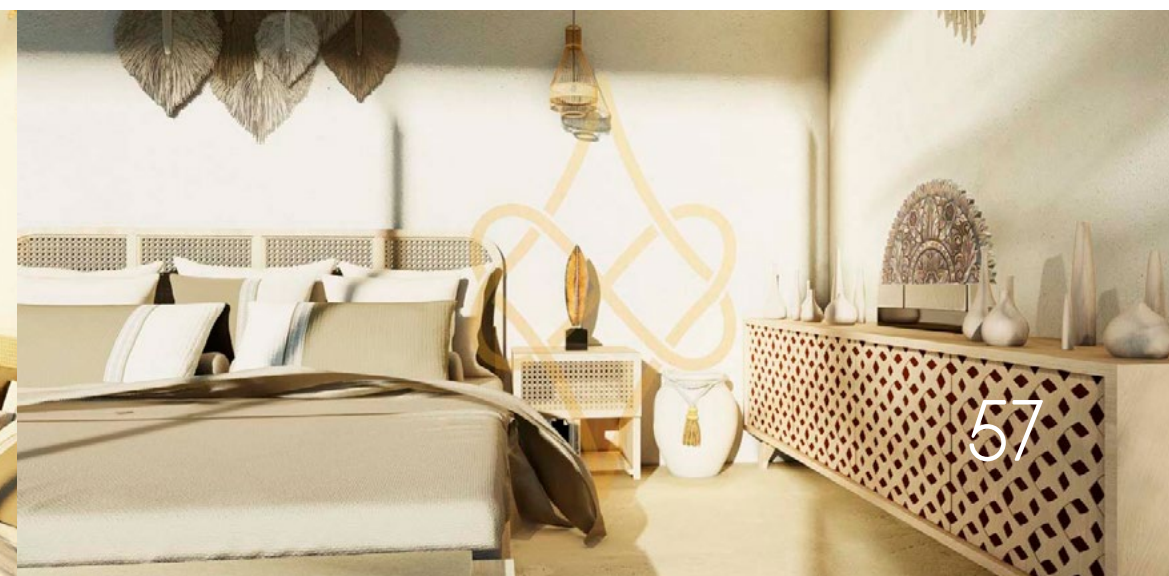
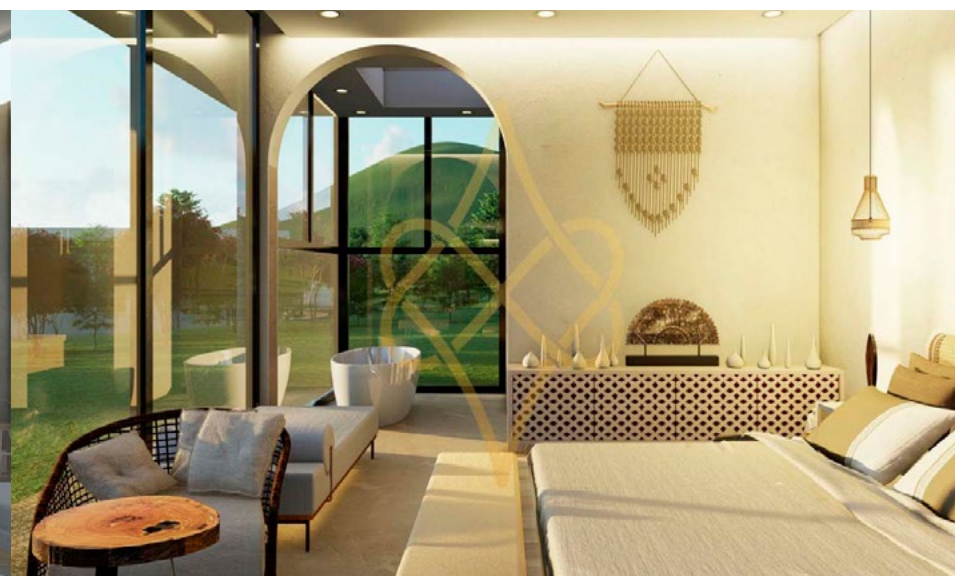


El Peñon Ranch

Is a mountainside retreat that feels like a sacred sanctuary in nature. Three homes cascade down a terraced hillside, harmoniously arranged around a central yoga and meditation hall – the spiritual heart of the property. An open-air gym pavilion overlooks the valley, blending movement with landscape. Each home opens to sweeping views through floor - to - ceiling windows, creating seamless flow between indoors and out, while the entire complex breathes with sunrise light and cool mountain air.

Blending modern design with regional character, the architecture unites strength and soul. Stone foundations and earthen plaster walls root each home to the land, while warm wooden beams and sustainable bamboo add natural charm. Broad roof overhangs and deep terraces expand the living spaces outdoors, inviting quiet

contemplation beneath sun and rain. At the heart of the retreat, the yoga hall's soft dome ceiling focuses energy toward the center, creating a tranquil spiritual core. Gentle curves and sacred geometric proportions unify the buildings, while their placement follows the terrain's contours, preserving existing trees and honoring the site's organic rhythm.



Beneath the meditation hall, a buried quartz crystal anchors the site's energy, radiating serenity and balance throughout the retreat. The entire complex feels alive, attuned to the mountain's natural frequencies and designed as an extension of the earth itself. Ranch Reserve El Peñon stands as an example of sustainable spiritual architecture—where nature, geometry, and mindful design converge—forming a living organism that nurtures body, mind, and spirit in perfect harmony with the surrounding landscape.





15

PRISM RETREAT HEALING CENTER

GREECE / Land: 8,000m² / Design: 800m²

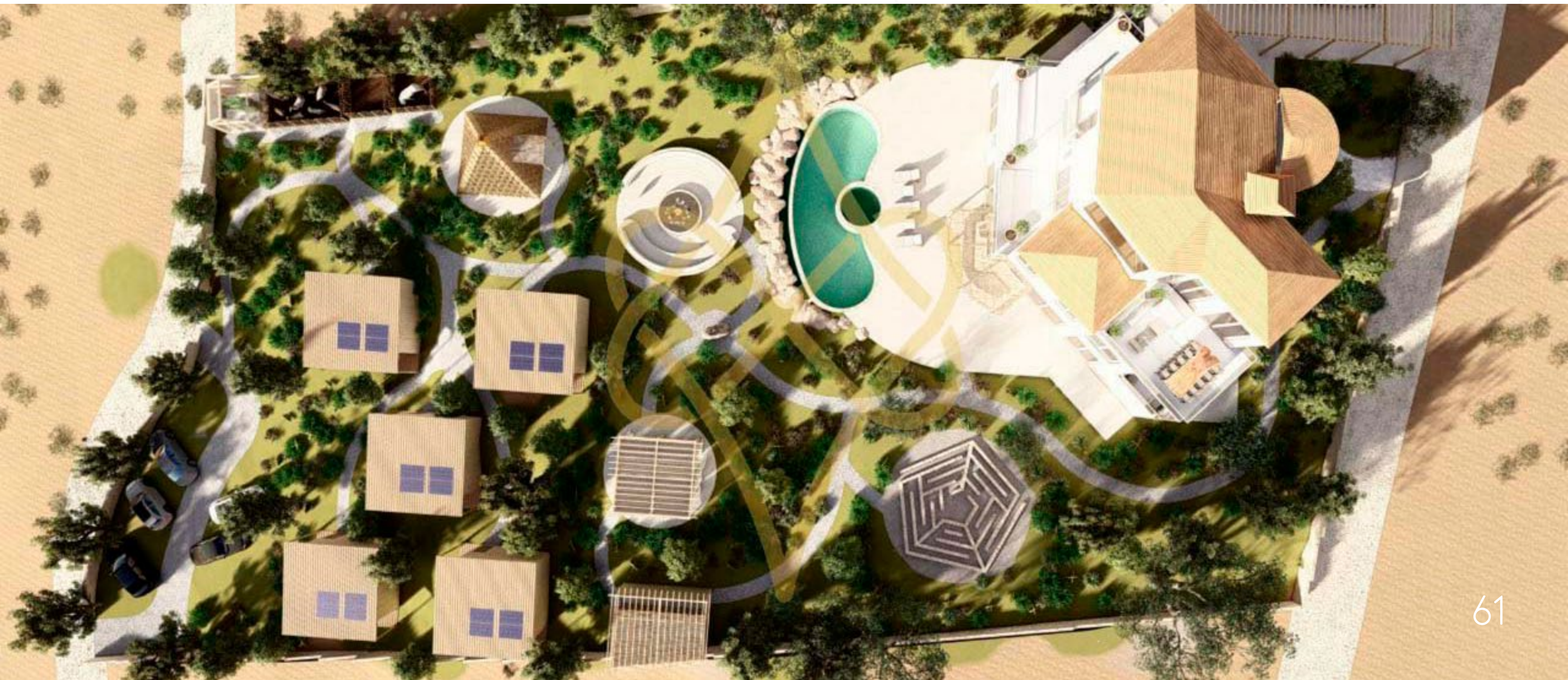


Prism Retreat Healing Center

Prism is a beautiful healing center close to the sea, in Greece, used for retreats and various healing treatments. The main building is an existing structure that was remodeled according to the Geophilia Design System to create the most harmonic and healing space. We also developed a Holistic Masterplan, that includes outdoor bar and pool area, fireplace, labyrinth, massage space, pyramid temple as well as 5 more casitas each dedicated to the five elements.



Special Sacred Geometry shapes were integrated in the interior design of the existing structure, based on the Client Analysis and the analysis of the space as well. Designing healing spaces is our absolute favorite, and we have dedicated 20 years in developing the most effective ways of design and construction to replicate the Ancient Temple technology.





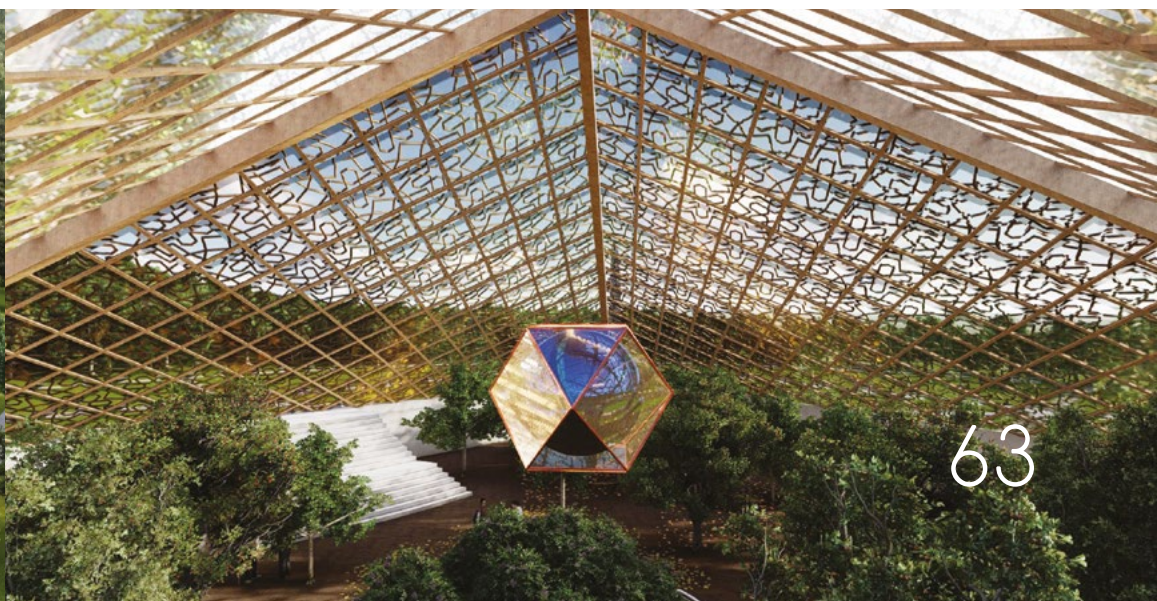
16

TWO PEACOCKS PYRAMID GREENHOUSE

CANADA / Land: 40,000m² / Design: 3,400m²

Two Peacocks

This beautiful project, Two Peacocks, has as its centerpiece a large pyramid structure that serves as a greenhouse as well as the heart of the whole development. It includes glamping area, a temple/ sound healing space, lodging, shop, café and other functions. The pyramid features proportions and shape that are found in the Great Pyramid as well as other Geophilic technologies to increase the Space Harmonics and as such to increase plant yield and health.





They include Fractal Dash added to paint, concrete, and varnishes, weaving Sacred Geometry grids with special metal wires in the floor as well as various biohacking technologies to counteract the negative side effects of artificial EMF and fractalize the water. We need to remember the Ancient Temple Technology that with our modern scientific experiments has been proven to provide food abundance through the activation of seeds!





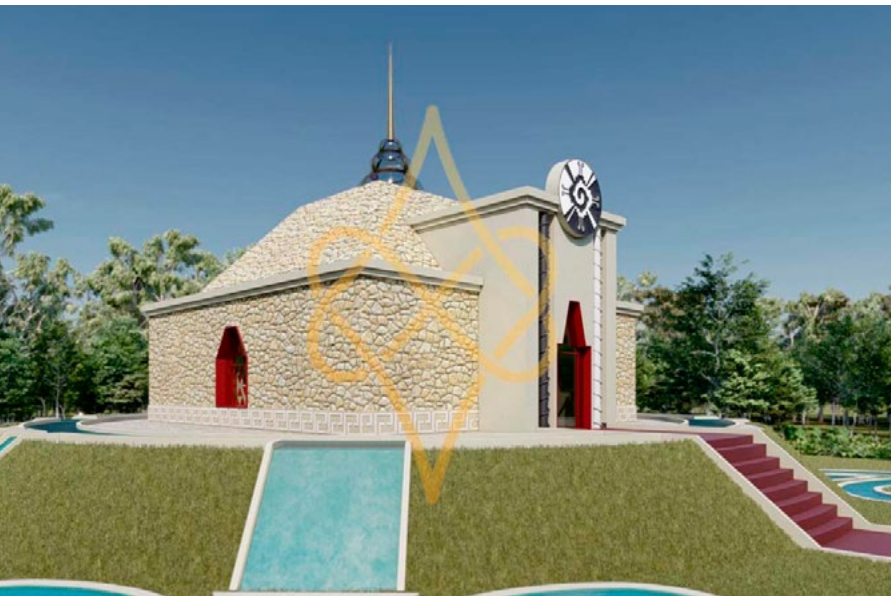
MAYAN TEMPLE

MEXICO / Land: 12,000m² / Design: 222m²



Mayan Temple

Is a contemporary sacred space in the jungle that draws on ancient wisdom. This ceremonial octahedral building (two pyramids joined at their bases) symbolizes the union of heaven and earth. Its floor plan unfolds in concentric circles from a central altar point, echoing the harmonious orbits of planets. In fact, the temple's dimensions and orientation are calibrated with cosmic cycles and key celestial events, so the architecture itself is tuned to the rhythms of the heavens. Visitors approach the temple along a winding path that spirals inward through tropical gardens, mirroring a journey of the soul toward inner enlightenment.



The temple is built of limestone and volcanic rock - materials favored by the ancient Maya for their strength and natural energy properties. Intricate fractal carvings of Mayan motifs adorn the exterior, and a series of arched doorways set in sacred proportions filter sunlight into mesmerizing interior patterns. Inside, a soaring central chamber lies beneath a grand domed oculus (a circular skylight at the roof's apex) . The floor is inlaid with an elaborate mandala of interlocking circles and star shapes, drawing the eye to the precise center of the room. There stands a gigantic quartz crystal - the spiritual heart of the temple - which amplifies the space's natural energy field and links it to the earth's own energies. Every

aspect of the design works together in harmony: the building is aligned to the cardinal directions, the altar and key elements use sacred proportions, and even the acoustics are tuned so a whisper at the center can be heard throughout the hall. The Mayan Temple is not just a structure; it is a living instrument of attunement. When you step inside, you feel a profound sense of peace and alignment, as if the architecture itself is guiding you into communion with the cosmos.



A man with a beard, wearing a green shirt over a blue shirt and grey trousers, stands on the left. A woman in a green and white striped shirt stands on the right. They are in a room with a wall of vertical wood slats. A semi-transparent dark green banner is overlaid on the image, containing the text.

 **HYPNOTHERAPY**
CENTER

THESSALONIKI, GREECE / Design: 120m²



Every element of the Hypnotherapy Centre is crafted to soothe the subconscious and promote healing. Smooth clay-plastered walls in earthy tones soften sound and evoke calm, while natural oak floors ripple outward in concentric rings, enhancing the meditative flow. A mandala ceiling of interlocking circles and triangles glows softly like sunrise, guiding clients into relaxation. Surrounding rooms follow Feng Shui balance, with plants and an indoor herb garden adding vitality. Beneath the main chamber, an amethyst crystal subtly amplifies serenity. Through sacred geometry and intentional design, the space becomes a living vessel of peace, clarity, and gentle transformation.

Hypnotherapy Center

A 120 sqm urban sanctuary is designed for journeys of mind and spirit. Once a standard apartment, it now fosters deep relaxation and healing through flowing curves and circular forms that replace rigid lines. At its heart lies a round hypnotherapy chamber with softly curved walls and a domed ceiling, shaped by sacred geometry – a circle within a square using golden-ratio proportions – creating perfect acoustic harmony and a cocoon-like sense of safety and focus.



01

BIOSS LILAH MONTESSORI SCHOOL

MEXICO / Land: 5,000m² / Design: 2,000m²



Montessori School

Bios Lilah is a beautiful Montessori school designed with all the principles of the Geophilia Design System. It was constructed in 2008 as extension of an existing very small classroom. The design is based on a double golden ratio phi spiral which energetically acts as an embracing pattern for all the children and their creativity.

One of the signature features is a special implosion point where the children helped to plant an altar. The absolutely wonderful aspect of this project is that the owner is a hard core natural building advocate. Everything was built with absolutely natural materials - no concrete or cement was used! The foundations are made with stone, the main structure with bamboo.

For walls we use earth, straw bales, cob, bahareque, lime, wood and a lot of love, care and dedication of our collaborators, friends and families; who accumulated in this space their vital energy in some way, and that today circulates as a collective essence within each of its spaces. We also plastered with natural soil-based and crystal powders.





The clients testimonial: " We were able to expand from 10 students to 120 in just a few months!". That is the true power of Sacred Geometry, when we create structures in resonance with the universe!

20

AGAPO COMMUNITY

GREECE / Land: 12,000 sqm / Design: 2,300 sqm





Agapo Community

Agapo Community is a 12,000 sqm regenerative village conceived as a living mandala of harmony, nature, and sacred geometry. Organized around a powerful geometric center, the masterplan radiates outward in interconnected rings of architecture, water, and gardens. Each building aligns with a precise radial grid, forming a balanced constellation of homes, communal halls, and natural ponds that mirror cosmic order. From above, the layout reveals a symphony of circles, hearts, and vesica-piscis forms, creating a landscape that feels both intentional and

deeply alive. This geometry not only defines the aesthetic identity of the community – it shapes the energetic experience of every space within it.

The architecture blends conscious design with bioclimatic principles to create a village fully integrated into its landscape. Clustered houses nestle among lush vegetation, while solar-oriented roofs maximize energy efficiency. Natural water bodies positioned throughout the site support microclimates, biodiversity, and a sense of serenity. The

central structures – including a circular community hall and gathering plaza – act as the spiritual and social heart of the project, grounding residents in connection and shared purpose. Pathways follow organic curves rather than rigid lines, allowing movement to feel intuitive and harmonious with the land.



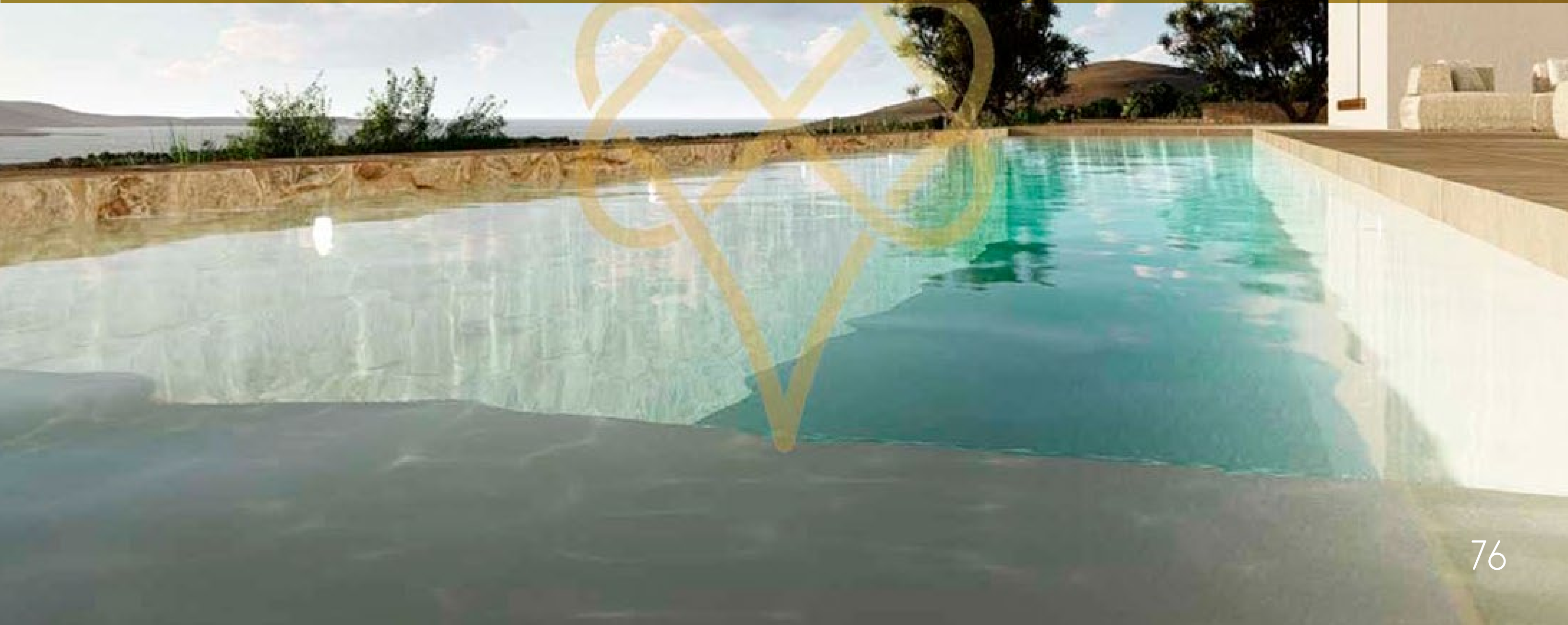
Designed as a blueprint for holistic living, Agapo Community embodies the values of eco-spiritual architecture, regenerative design, and intentional community planning. Each dwelling opens toward gardens and ponds, fostering daily contact with nature and encouraging a slower, more mindful rhythm of life. The entrance, marked by a

monumental sacred-geometry gateway, sets the tone for a space rooted in coherence and higher vibrational living. From the earth-friendly materials to the fractal-inspired site plan, every detail supports emotional well-being, social connection, and ecological balance – a new model for future-ready, spiritually attuned communities.



1 ANTIPAROS 2 ISLAND VILLA

GREECE / Land: 4,000m² / Design: 180m²

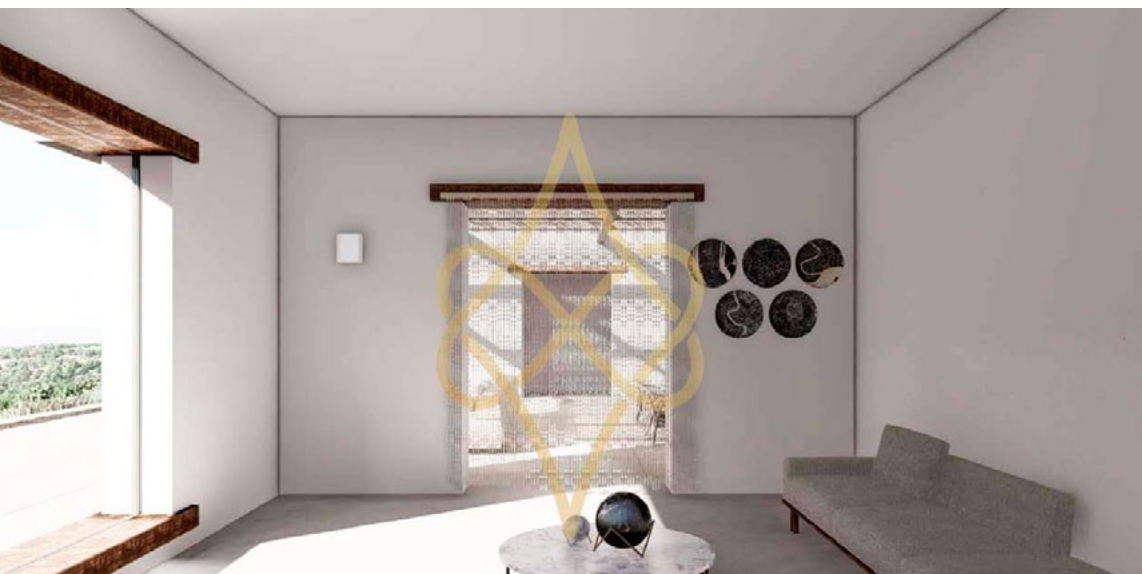


Seaview Luxury Villa

180 sqm retreat set on a sunlit hillside overlooking the Aegean Sea. It blends classic Cycladic architecture – whitewashed walls, stone terraces, and graceful arches – with a quiet harmony of sacred geometry. Designed as a series of golden rectangles aligned east – west, the villa follows the sun’s path: morning light fills the bedrooms, while the terraces glow with sunset’s warmth, creating a natural rhythm between light, time, and daily life.



Built by local craftsmen, the villa’s lime-plastered stone walls stay cool under the Mediterranean sun, connecting the home to the island’s geology. Inside, open-plan spaces flow with ease, yet each area—kitchen, lounge, and sleeping nook—is proportioned to ϕ (phi), the golden ratio, lending every corner a subtle sense of balance and comfort. At its core lies an open-air courtyard with a spiral pebble mosaic and hand-carved marble fountain. This tranquil heart, inspired by ancient Greek meander patterns, not only invites airflow and reflection but also celebrates timeless beauty through geometry, craft, and light.





Subtle sacred-geometry touches infuse Antiparos Villa with harmony and soul. The main doorway, shaped as a vesica piscis arch, symbolizes unity, while built-in niches follow Fibonacci proportions for balanced flow. Natural materials – olive wood, rattan, and cotton in sea and sky hues – add warmth and texture. An ancient olive tree preserved in the garden embodies continuity. Together, these details create a serene retreat where geometry and nature celebrate timeless Greek island living.





2
2 JORGE
VILLA

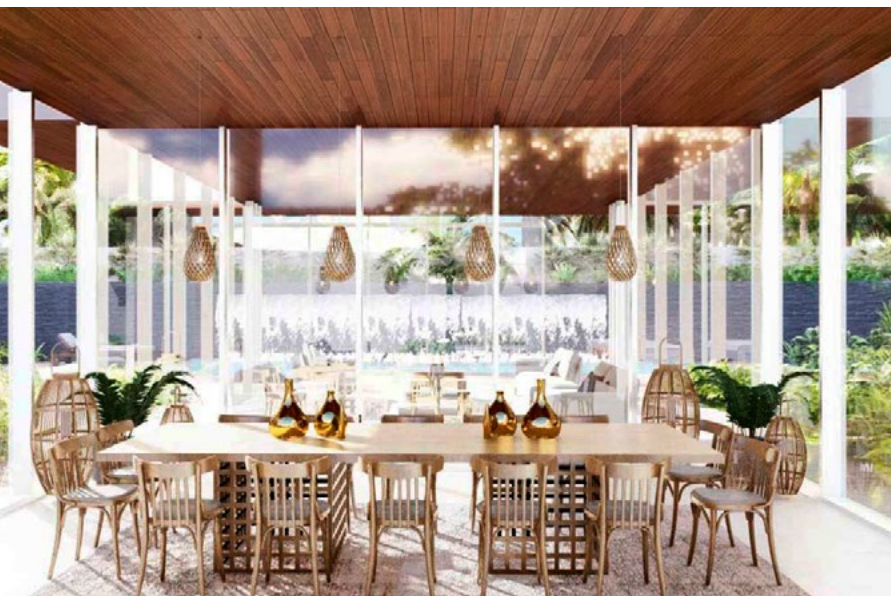
MEXICO / Land: 7,000m² / Design: 300m²



Jorge Villa

A modern countryside retreat that fuses classic modernism with mathematical harmony. Set on a 7,000 sqm plot, its layout follows precise ratios for balance and flow. One wing extends by a π^2 ratio, adding graceful expansiveness, while the shift from open living areas to intimate rooms follows $\sqrt{\phi}$, creating a natural rhythm. Invisible proportions shape a serene, perfectly balanced spatial experience.

The architecture of Jorge House is bold yet deeply livable. Interlocking volumes of concrete, native stone, and glass form its sculptural structure, while warm textures make it welcoming. Many windows follow golden - rectangle proportions, balancing light and views with mathematical grace. Broad overhangs and wooden sun screens, guided by sun - path studies, block the high summer sun while inviting gentle winter warmth. Materially, the house bridges modernism and nature: off - white exposed concrete reflects classic design, a stone base anchors it to the land, and hardwood accents infuse human warmth into its crisp, geometric lines.



At the heart of the home lies a serene circular meditation alcove beneath a skylight, its pebble mosaic floor grounding the space in quiet simplicity. Bathed in sunlight, it serves as the family's energetic center—a place for pause, reflection, and renewal. By harmonizing sacred proportions with thoughtful planning, Jorge House transcends form and function, becoming a living expression of balance, where mathematical precision and soulful living flow effortlessly together.





23

CASA ALMA HOLISTIC ECOLODGE

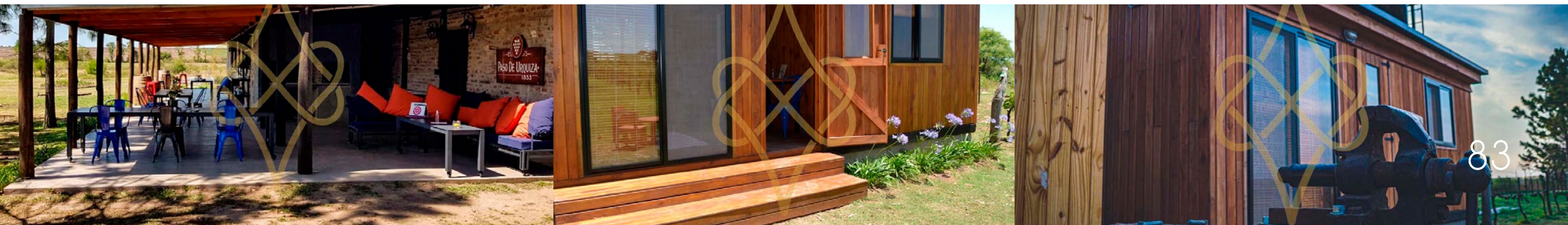
ARGENTINA / Land: 15,000m² / Design: 2,200m²

Casa Alma

Is a holistic retreat set amid tranquil vineyards and native gardens. Spread over a large estate, it combines an ecolodge with a healing retreat center, all designed to help guests reconnect with nature. The master plan is inspired by a blossoming flower: at the center is a peaceful plaza, and radiating outward are villas, healing areas, and communal spaces arranged like petals.



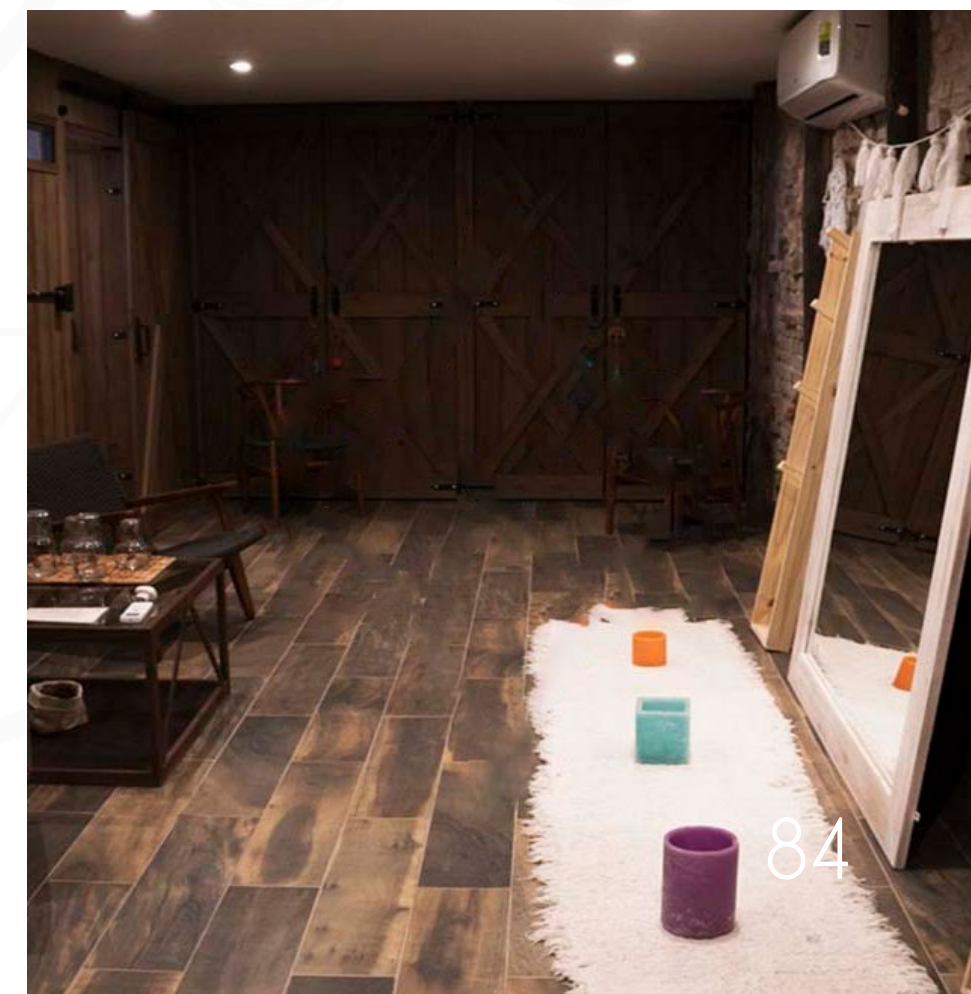
Each building is positioned along subtle golden-ratio ley lines, weaving the whole property into one coherent organism. Winding pathways curve through the vines and gardens, tracing a gentle Fibonacci spiral across the landscape. This fractal space planning creates a seamless connection between the land and architecture, embodying what some call sustainable spiritual architecture and making Casa Alma one of the most profound sacred geometry homes in Argentina.





The architecture balances contemporary elegance with regional craftsmanship. Rammed-earth walls in warm earth tones and locally quarried stone root each building in the landscape, providing both beauty and natural cooling. Green roofs and vine-covered pergolas blend the structures into the vineyard, offering cool, dappled shade. Artisanal touches abound—hand-carved doors with Flower of Life

patterns and stained glass that projects sacred-geometry light. Designed as a healing vessel, Casa Alma follows the land's geomantic energy, with its central plaza and crystals beneath harmonizing the entire retreat. Powered by solar energy, rainwater harvesting, and permaculture gardens, Casa Alma is a sanctuary where architecture, nature, and spirit unite in harmony.





24 CAFE 02
RESTAURANT

MEXICO

Cafe 02 Restaurant

Restaurant O2 is the result of the transformation of a space in the basement, under the second tower of 40 levels in the Arcos Bosques development in Mexico City, the space is attached to the parking lot and had no proposal or vegetation. The task was to create a complete design, besides the space, all the furniture was designed by Juan Garduño's office and manufactured in Mexico, the lamps, sugar cane eaves, tablecloths, graphics and accessories were made within the architectural design and created in the country.



We did the electromagnetic field reading study to know where is the best place to locate the restaurant areas. In addition, we made a deep analysis of the client to know the symbols, geometries, harmonic colors for the place. We located the center of power or point of greatest electromagnetic inclusivity of the space and we wove geometries under the floor with a special mix of metals.



25

SPA WELLNESS LUXURY SUITE

VOULIAGMENI, ATHENS / Design: 250m²



Spa Wellness Luxuruy Suite

Is a 250 sqm apartment transformed into a private spa-like retreat overlooking the blue Aegean Sea. The layout flows with gentle curves and circles that echo ocean waves and seashell spirals - a deliberate nod to the nearby sea. On the marble floors at the entrance, a subtle Fibonacci spiral is inlaid, quietly guiding the visitor inward. Floor-to-ceiling glass walls invite abundant natural light and panoramic sea views, so that the indoor living spaces feel as expansive as the horizon outside. Throughout, elegant natural materials heighten the sense of serenity: smooth Greek marble, warm golden-hued woods, and textured stone give the suite an earthy richness amid its upscale finishes.

The heart of the suite is the spa room. A round soaking tub sits beneath a domed skylight patterned with interlocking circles (a vesica piscis design) . Sunlight filters through its cut-outs and dances on the water below - a magical interplay of light that feels almost sacred. Elsewhere in the suite, custom furnishings follow the golden ratio: from a lotus-inspired bed to gently curved sofas in each lounge nook, every piece is calibrated for geometric harmony. This attention to balance makes every space feel tranquil and complete. Plants and subtle energy elements finish the experience: lush indoor greenery and a living green wall in the meditation corner bring nature inside and purify the air.





At the suite's core lies a "heart of the space" - a circular floor mosaic set with a rose quartz crystal - which anchors a positive energy field. Sea breezes flow through cleverly placed windows, and a Himalayan salt lamp quietly ionizes the air. In this luxury suite, bioenergetic design and nature's gifts converge to create an environment where comfort and healing truly go hand in hand.

26

HARMONY GUESTHOUSE

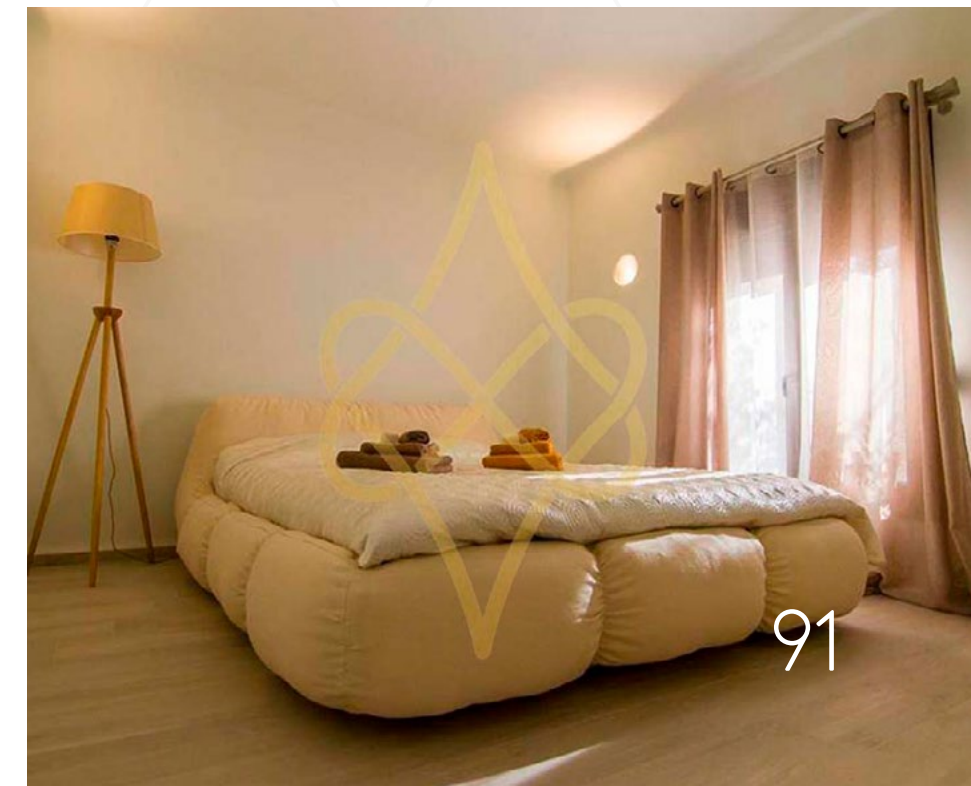
MOUNTAINS, GREECE / Design: 150m²



Harmony Guesthouse

Cozy 150 sqm mountain retreat designed as a living mandala. A central living area forms the home's nucleus, and the bedrooms and meditation nooks orbit around it like planets around a sun. Sacred geometry quietly guides this arrangement: for example, the two largest windows align to form a vesica piscis shape, symbolically opening the interior to the landscape and inviting natural light to become part of the home. This fractal-inspired floor plan weaves a fractal space planning design through every room, making the house feel alive and deeply connected to its setting.

Harmony Guesthouse embraces simplicity through organic materials that radiate warmth and authenticity. Hand-chiseled local stone and white lime plaster recall traditional Greek mountain homes, naturally insulating the interiors while grounding the building in its landscape. Exposed wooden beams, spaced by the golden ratio, establish a calming rhythm that harmonizes with the eye. Every window is purposefully framed to capture views of clouds, sunlight, and distant peaks, transforming nature into ever-changing artwork. Minimal furnishings of cotton, wool, and hand-carved wood enhance comfort and a tactile connection to the natural world.





At the heart of the guesthouse, a lotus motif inlaid in the floor anchors the energy of the space, encouraging meditation and quiet gathering. Gentle sensory details – like a soft indoor fountain and glowing salt lamps with beeswax candles–infuse serenity and cleanse the air. Whether greeting dawn over the hills or resting beside a wood fire, guests experience a sense of harmony where sacred geometry and biophilic design nurture balance, calm, and profound inner peace.

27

AHAVA HEALING CENTER

MEXICO / Land: 500m² / Design: 430m²

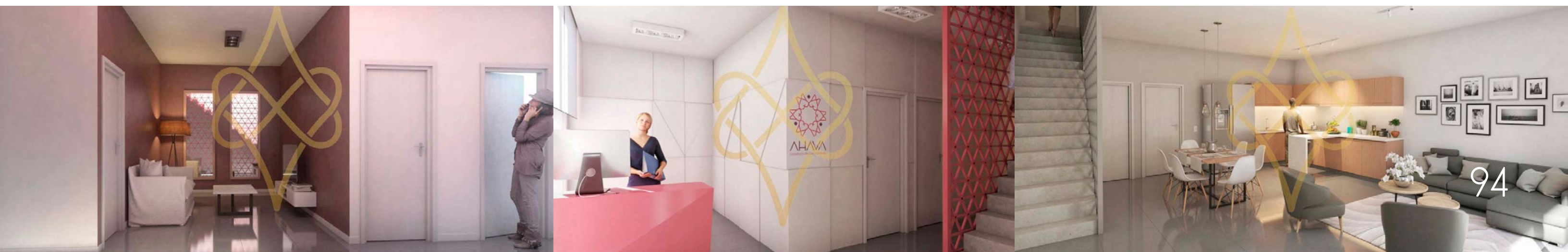


Ahava Healing Center

Is a peaceful urban oasis dedicated to well-being and love. This three -story building contains two independent apartments that serve as holistic healing suites. Sacred geometry is woven throughout: the floor plan follows golden - mean proportions, creating a natural flow of space and light.

As you enter, a floor-to-ceiling Flower of Life mural greets you, immediately bringing a sense of harmony; that motif repeats in wood screens and etched glass throughout the interior, tying everything into a soothing visual mandala. The craftsmanship is elegant yet deeply human: walls are finished in smooth adobe plaster, floors in warm hardwood, and accents of river stone add texture and grounding warmth. A graceful spiral staircase, inspired by a nautilus

shell and illuminated from above by a crystalline skylight, connects all three levels in one continuous gesture. Each suite balances openness with privacy - therapy rooms and living areas are positioned for free energy flow, following feng shui and geomancy principles. Soft daylight pours in through golden-rectangular windows, while at night a gentle glow from Himalayan salt lamps creates a calm, healing ambiance.





Energetically, the center quietly amplifies positive vibrations: crystals are embedded at key spots (beneath a meditation nook, at the base of the staircase) to enhance the healing atmosphere. In the main therapy room, a hand-painted mandala on the ceiling marks the “ heart of the space,” anchoring a calming energy field. Biophilic touches - indoor plants, natural woods, and a small fountain - bring nature indoors. Ahava feels like a living temple of healing: every element, from layout to décor, resonates with a frequency of love and wellness.

As one entry point for Geophilia’s principles, this spiritual architecture project demonstrates how environment can cocoon visitors in compassion and rejuvenation.



VILLA BELLA

LUXURY

GREECE / Land: 540m² / Design: 300m²

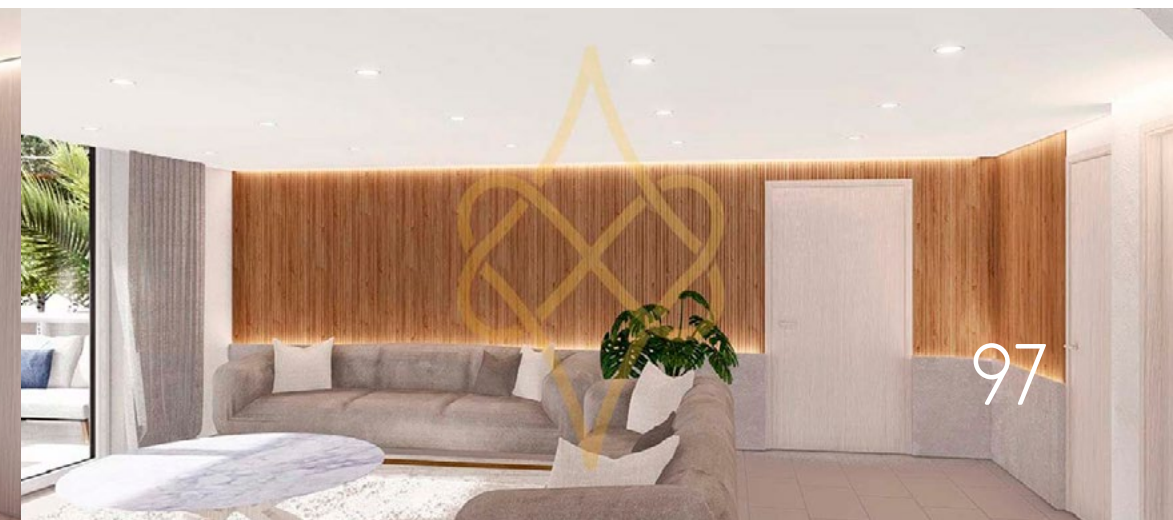
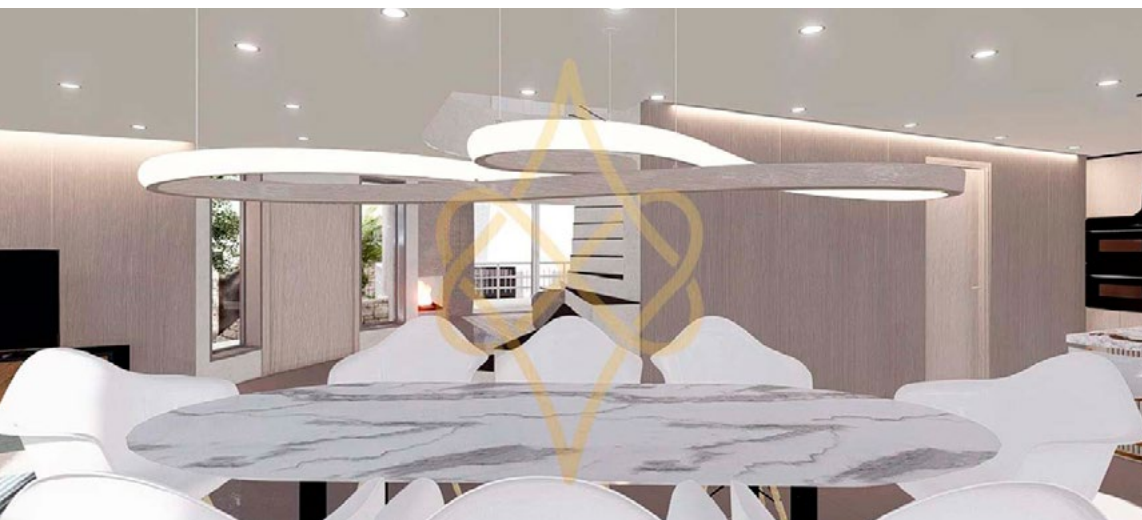




Villa Bella Vita

A three-level city house that has been completely reimagined from the inside out. The renovation was guided by sacred geometry - though interestingly, the designers applied the Euler number ($e \approx 2.718$) instead of the usual golden ratio to shape key spaces and elements. This uncommon approach introduced a fresh sense of harmony and luxury throughout the interiors. The transformation is apparent the moment you enter: the formerly cramped foyer is opened into a petite

atrium topped by a skylight. Daylight now streams through a glass panel etched with a Seed of Life pattern, casting dancing reflections that shift as the sun moves. A narrow, utilitarian staircase has been reinvented as a graceful curved stairway. Each landing follows that special Euler proportion, so ascending feels surprisingly fluid and balanced. The new wrought-iron railing itself is a work of art, featuring a vine-like pattern inspired by Fibonacci growth.





High-quality natural materials elevate the senses while embracing eco-conscious living. Locally sourced marble and sustainable hardwood form rhythmic patterns underfoot, while lime-plastered walls in soft earth tones breathe naturally. Subtle geometry enriches the design – five-sided niches balance energy, and lighting enhances spatial flow. Passive cooling through new windows and vents reduces energy use. Villa Bella Vita becomes a refined sanctuary where geometry, nature, and human comfort unite in harmony and holistic beauty.





29

FOREST NATURAL HOUSE

BRAZIL / Land: 2,000m² / Design: 400m²



Forest House

Rest in a tranquil woodland clearing, designed to merge completely with the surrounding forest. Sunlight filters through tall canopies, filling the interior with shifting patterns of light and shadow that dissolve the line between indoors and out. The layout follows nature's sacred geometry: movement unfolds in a gentle spiral, and the entrance, framed by a vesica piscis arch, embodies balance and calm. Every proportion and pathway reflects the organic harmony of the living landscape.



Rooted in sustainability and biophilic design, Forest House aligns east-west to capture winter sunlight and remains shaded by trees in summer. Skylights and operable vents invite dappled light and pine-scented air to circulate naturally, minimizing mechanical cooling. Thick adobe walls and earthen plaster provide thermal mass, while wooden beams and local finishes infuse warmth and authenticity. Stone flagstone floors ground the space, and a sculptural clay-and-quartz fireplace radiates subtle energy at the home's heart. Every material and proportion harmonizes architecture, nature, and spirit, creating a breathing sanctuary that feels both timeless and alive within the forest's quiet rhythm.





30

SHAMAN HOUSE

NAYARIT, MEXICO / Land: 2,000m² / Design: 300m²

Shaman House

It is a powerful jungle sanctuary. The entire home is arranged according to the chacana, an Andean sacred cross, with the design literally radiating around a single ancient tree. This venerable tree sits at the very center of the layout (a natural power spot), and the house wraps around it in a cross shape - essentially embracing the tree as the spiritual heart of the property. The floor plan itself forms a symmetric four-pointed cross, echoing the chacana, with a central open-air courtyard around the cherished tree. By day, this courtyard brings in sunlight and tropical breezes; by night, it offers a framed view of the starry sky - a constant reminder of nature's presence and the cosmos beyond.





Architecturally, Shaman House blends traditional Mexican design with sacred geometry to create balance and harmony. Thick adobe brick walls, terracotta roof tiles, and wide verandas provide cool refuge in the jungle heat, while the home's proportions follow π and ϕ ratios for a sense of natural order. Handcrafted details infuse symbolism: a sun-carved door welcomes and protects, and at the home's center, a circular earthen hearth unites the four elements – air, earth, fire, and sky. Curved adobe benches, mineral-infused plaster, and walls in ochres and indigos enrich the energy. Shaman House stands as a living altar where architecture and spirit meet.





31 MOUNTAIN
HOUSE

BRAZIL / Land: 10,000m² / Design: 1,200m²



Mountain House

Perched high in emerald-green mountains, this residence opens to sweeping panoramic views, becoming a modern sanctuary where architecture and landscape merge as one. Inside, every space feels deeply connected to the surrounding peaks and forests. Guided by sacred geometry and golden ratio principles, each wall and window aligns in harmony with nature's own patterns. The result is a holistic sense of balance - a home that radiates serenity and draws its quiet strength from the land itself.

This holistic architecture approach, rooted in fractal and geometric design systems, infuses the house with calm, coherence, and positive energy. Expansive glass walls allow rooms to breathe with the jungle air and morning light, while the building's orientation follows the sun's path to remain bright in winter and naturally cool in summer. Thoughtful passive design strategies and sustainable materials enhance comfort and environmental balance: a stone-and-concrete foundation anchors the structure to the slope, while earthen plaster walls and responsibly sourced wood regulate temperature and humidity with ease and authenticity.



At the heart of the home lies a soaring double-height atrium centered around a quartz-and-granite fireplace - both hearth and energetic core. This radiant focal point gently distributes warmth and grounding energy through the living spaces, embodying Geophilia's philosophy of bioenergetic design. Here, geometry, light, and material unite to create not just a dwelling, but a living organism attuned to the rhythms of earth and sky - a true sanctuary of harmony in the mountains.





32 AKSHA
RESTAURANT

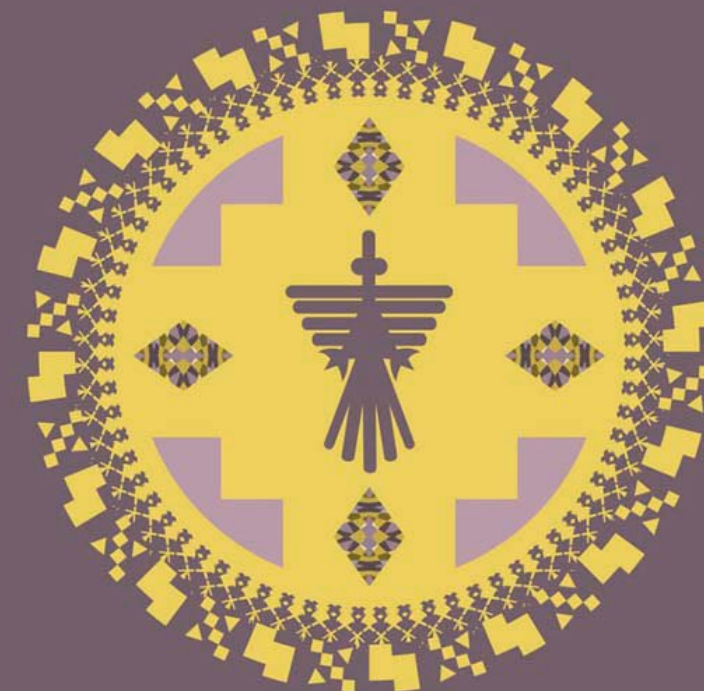
MEXICO / Design: 180m²



Aksha Restaurant

180 sqm Peruvian dining space that feels both vibrant and sacred. Celebrating Andean flavors, it blends cultural symbolism with subtle sacred geometry inspired by the Incan chakana (Andean cross), creating a balanced flow throughout. At its heart, an open ceviche bar and hearth serve as the symbolic fire where guests naturally gather, evoking community and warmth. Above, a circular ceiling canopy pierced with tiny perforations glows like a starry sky when illuminated, casting constellations of light across the room. Aksha becomes more than a restaurant—it is a sensory journey uniting earth, fire, and cosmos.

Geometry and storytelling are woven into every element of Aksha's design. Overhead, warm triangular panels tessellate across the ceiling, evoking the peaks of the Andes while softening acoustics for intimate conversation. Underfoot, intricate Peruvian tiles with fractal motifs at the entrance transition into smooth wooden planks arranged in a golden-ratio grid, subtly guiding guests inward. Along the walls, recessed niches display authentic Peruvian ceramics and textiles, each illuminated by overlapping circles of light—a vesica piscis effect—symbolizing cultural fusion. Together, these forms and patterns compose a spatial narrative that feels both grounded in heritage and elevated by geometry's timeless harmony.





Materials and lighting further shape Aksha's warmth and authenticity. Adobe-textured plaster walls recall Andean village homes, complemented by vertical gardens that express the restaurant's eco-conscious ethos. Above each table, hand-woven pendant lamps adorned with indigenous geometric patterns cast a soft, honeycomb-like glow, while the bar shimmers with backlit colors—a modern homage

to chakra energy. A large rose quartz crystal at the entrance radiates calm, and circular mirrors with lush plants keep positive energy circulating. Through this balance of biophilic design, sacred geometry, and cultural artistry, Aksha transforms dining into a ritual of connection, nourishment, and sensory awakening.

33

SUMMER HOUSE INTERIOR RENOVATION

ATHENS GREECE / Design: 80m²

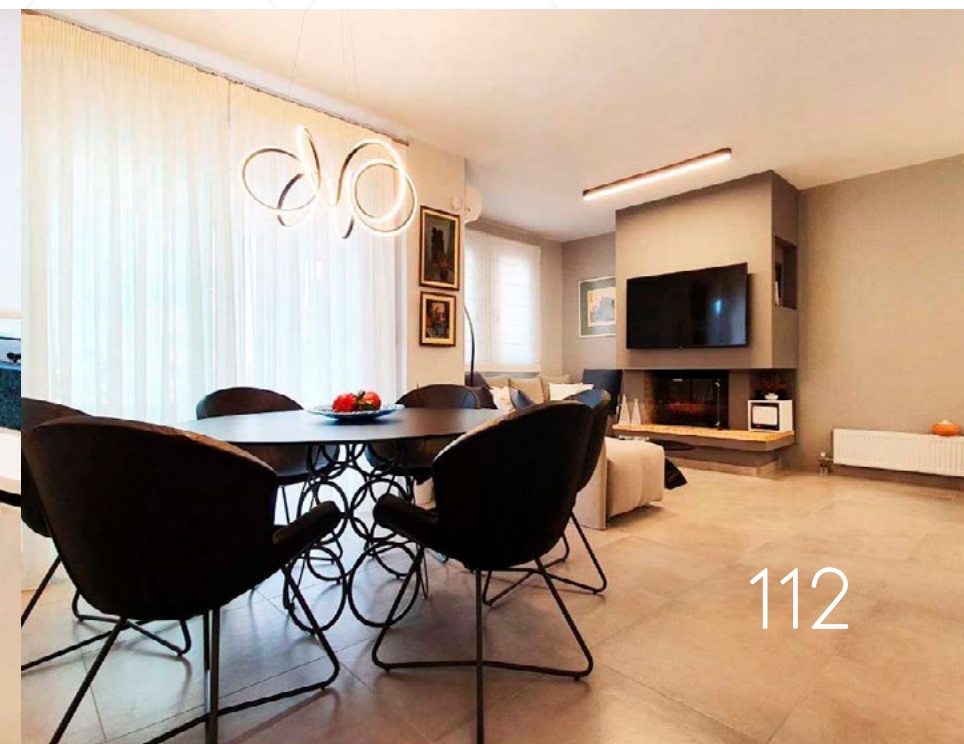


Summer House

This interior transformation was guided entirely through the Geophilia Design System. The process began with a deep client analysis, including their Five-Element profile and spatial emotional patterns. From this understanding, the interior layout, materials, and color palette were selected to support balance, grounding, and personal resonance.

The original space had a fragmented circulation and heavy, stagnant areas. We opened the floor plan to create a clearer movement path and allowed light to flow through the home more naturally. Each intervention was intentional: proportion, orientation, and spatial sequencing were aligned with the client's elemental needs – creating a living environment that feels both calm and quietly energized.

Light, natural tonality, and subtle contrast form the primary character of the space. Clear surfaces and soft colors open the rooms, while selected accent tones introduce identity and emotional warmth. The furniture and built elements follow simple, precise geometry, ensuring that function, proportion, and presence remain in harmony. Nothing is decorative without purpose. Nothing is imposed. The design emerges from the meeting of the resident's inner landscape and the place itself.





This is not styling. It is alignment.

A home shaped by who the client truly is – held by space that supports their life, their rhythm, and their well-being.

